



Food | Regional
Innovation
Scheme



Funded by the
European Union


Barbara De Ruggieri, Project manager
EIT Food HUB Italy – University of Bari Aldo Moro

EIT Food as part of EIT: Europe's one-stop shop for innovation

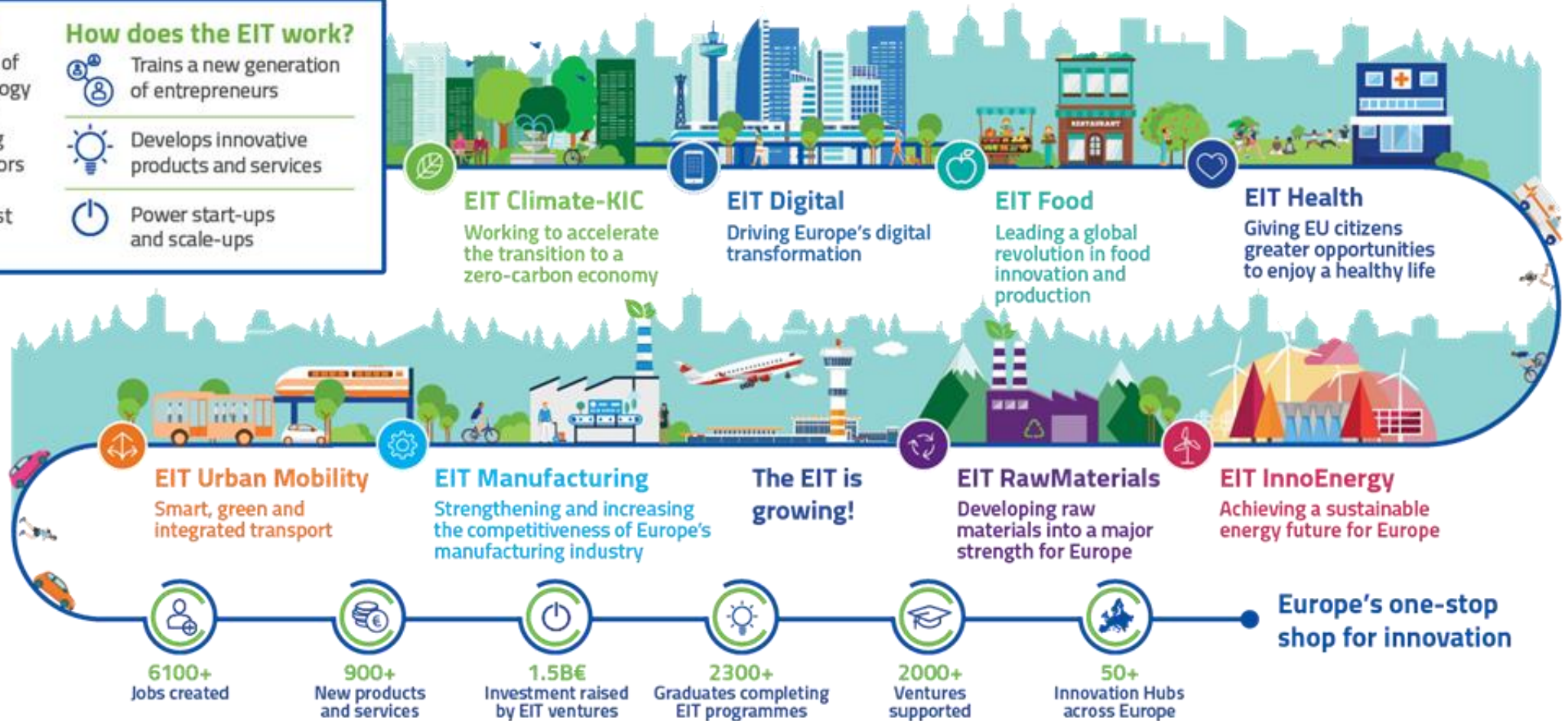
What is the EIT?

The European Institute of Innovation and Technology (EIT) drives innovation in Europe by supporting entrepreneurs, innovators and students across Europe to turn their best ideas into reality.

How does the EIT work?

-  Trains a new generation of entrepreneurs
-  Develops innovative products and services
-  Power start-ups and scale-ups

The EIT's Innovation Communities create and find innovative solutions to major societal challenges



IMPROVING FOOD TOGETHER

A guide to EIT Food

As Europe's leading food initiative, EIT Food is working to make the food system more **sustainable, healthy and trusted**

MISSION

To create a world where everybody can access and enjoy **sustainable, safe and healthy food**, with trust and fairness from farm to fork.

ROLE

To bring **all players together** and guide and accelerate the innovation process that will transform the food system.

STRENGTH

EIT Food strength comes from partners, which represent over 85 of Europe's leading agri-food companies, research institutes and universities.

The network also includes the RisingFoodStars Association, bringing together Europe's best agri-food start-ups and scaleups.

Headquartered in Leuven with regional offices in Warsaw, Freising, Reading, Leuven, Bilbao and Madrid.

EIT Food Central
Freising, Germany

EIT Food North-West
Reading, UK

EIT Food West & HQ
Leuven, Belgium

EIT Food South
Madrid/Bilbao, Spain

EIT Food North-East
Warsaw, Poland

Iceland

Georgia and
Armenia

EIT Food community



EIT Food community is unique because it brings together key players from across the food value chain including industry partners, startups, research centres and universities



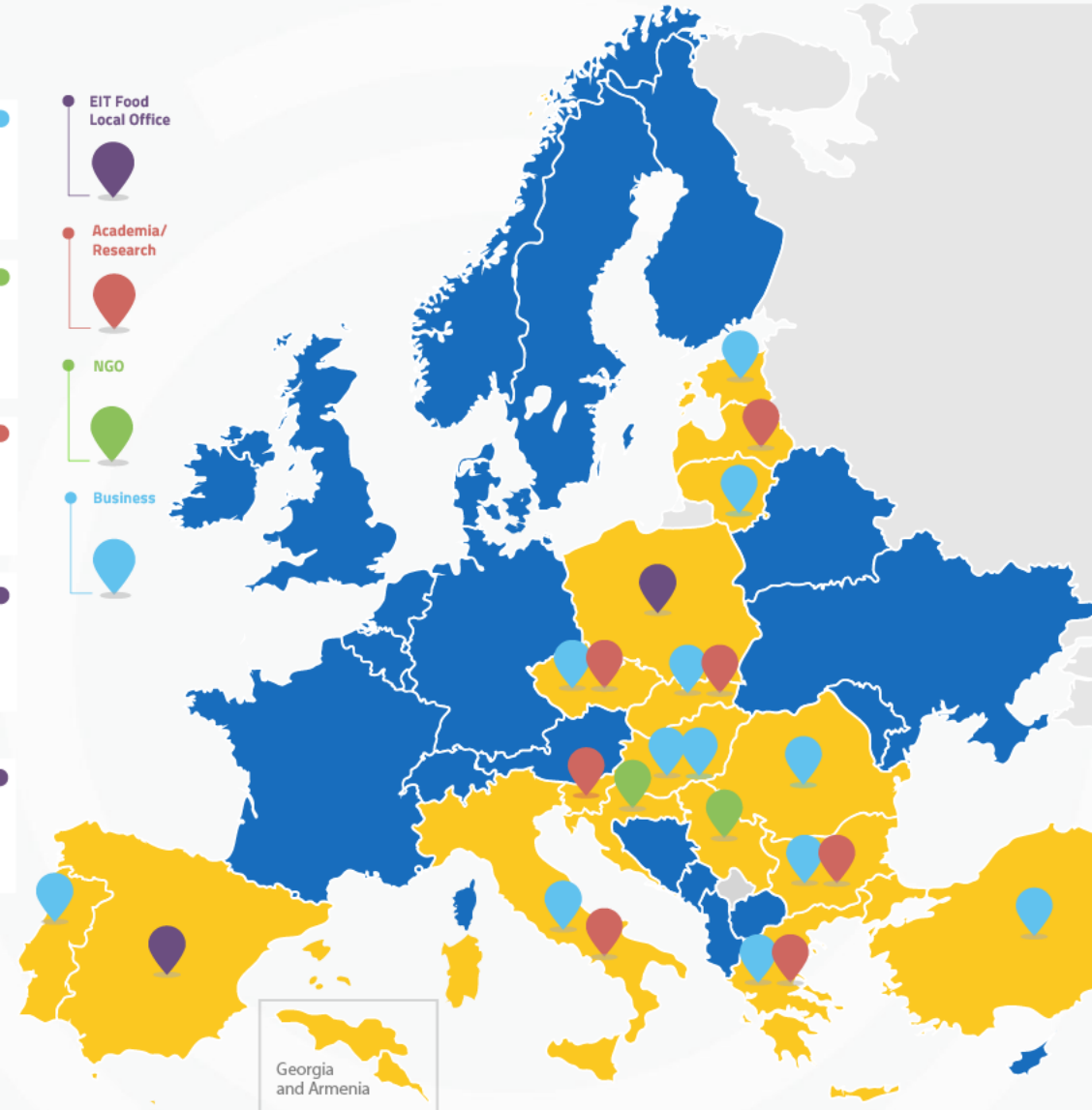
1 BRILLIANT COMMUNITY!

EIT FOOD REGIONAL INNOVATION SCHEME

EIT Food is represented by RIS HUBs in 17 countries



CLC North-East	BULGARIA	Agricultural University of Plovdiv	Cleantech Bulgaria	CROATIA	TERA TEHNOPOLIS Ltd.	ROMANIA	Impact Hub Bucharest
	CZECH REP.	University of Chemistry and Technology	Impact HUB Praha	SLOVENIA	University of Ljubljana Biotechnical Faculty	SERBIA	Association "SEE ICT"
	HUNGARY	Campden BRI Hungary Ltd.	PANNON Pro Innovations	ESTONIA	Tartu Biotechnology Park	LATVIA	Riga Technical University
	SLOVAKIA	Slovak University of Agriculture in Nitra	Slovak Business Agency	LITHUANIA	AgriFood Lithuania DIH	POLAND	CLC local office
CLC South	GREECE	Industry Disruptors Game Changers	Agricultural University of Athens	PORTUGAL	Building Global Innovators	SPAIN	CLC local office
	ITALY	University of Bari Aldo Moro	Impact Hub Siracusa	TURKEY	Impact Hub Istanbul		



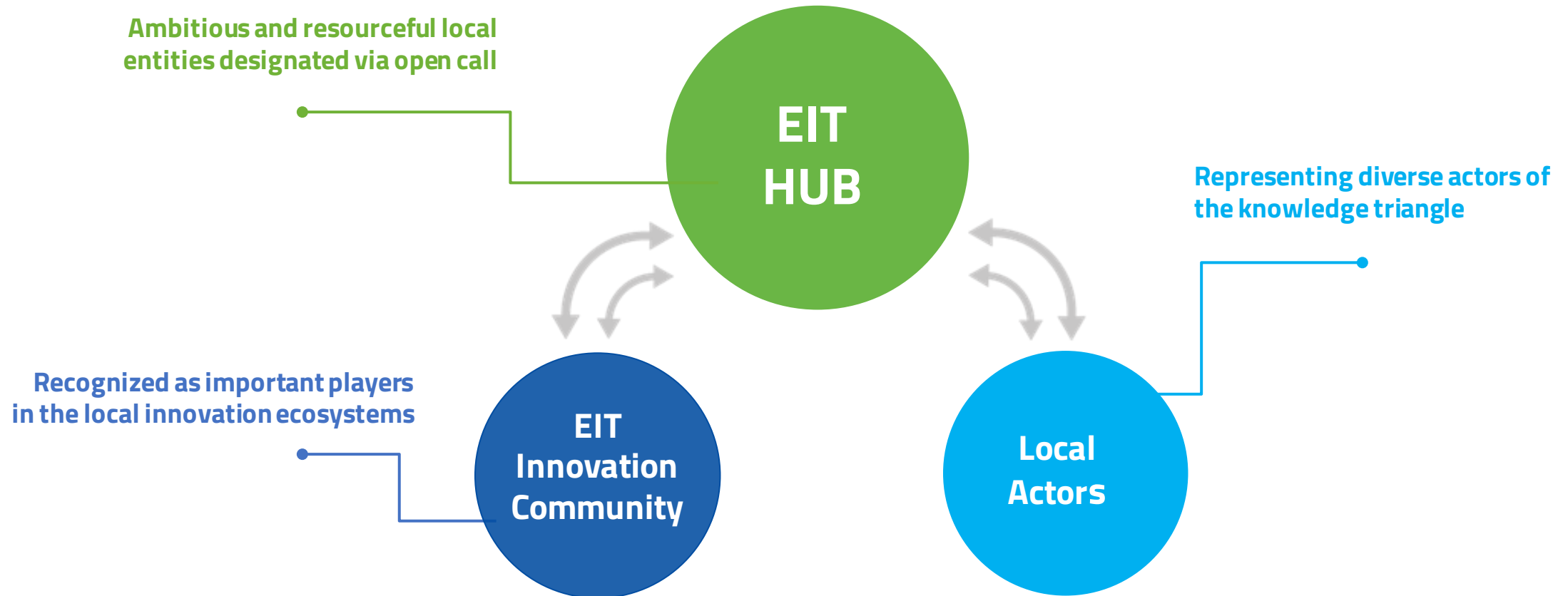
The role of EIT Food hubs



Food | Regional
Innovation
Scheme



Funded by the
European Union



European innovation HUB



Prof. Maria De Angelis – EIT Food Hub Italy Responsible



**University of Bari
Aldo Moro**

Barbara De Ruggieri
Project Manager

eitfoodhub.italy@uniba.it



**Impact Hub
Siracusa**

M. Clotilde Notarbartolo
Project Manager

hubitaly.eitfood@impacthub.net



EIT Food activities

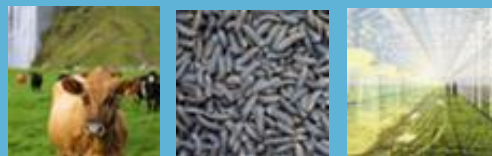
EDUCATION

Attracting, developing and empowering talent to lead the transformation of the food system



INNOVATION

Fostering collaboration across the entire food system to develop innovative technologies, products and services



ENTREPRENEURSHIP

Supporting innovative impactful entrepreneurs and startups to deliver new food innovations and businesses across Europe



PUBLIC ENGAGEMENT

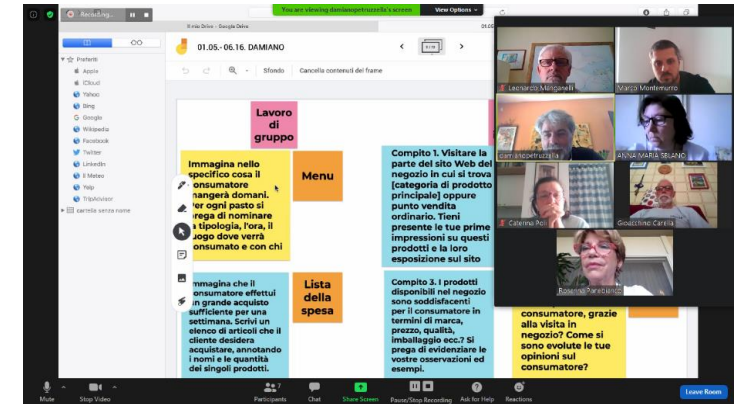
Engaging with people so they become change agents of the food system



EIT Food Consumer Engagement Lab

2020: Co-design laboratory for a new food product organized by a University-Company-Startup consortium with the active participation of over 65 consumers to be produced and placed on the market within 12 months from the end of the activities

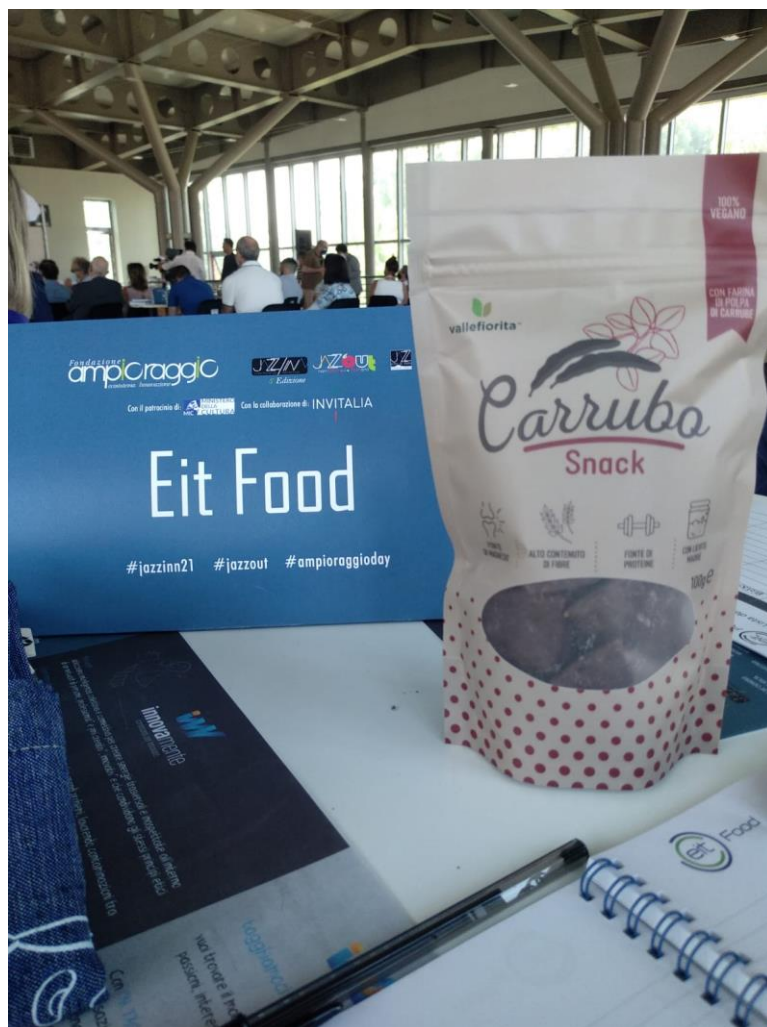
2021: Co-design laboratory focus on selected topics related to elderly consumers' preferences and food-related behaviors and outcomes of Labs will be disseminated through online sessions involving local food companies



IMPROVING FOOD TOGETHER

EIT Food activities

EIT Food Consumer Engagement Lab 2020



EIT Food RIS Research Infrastructure Network

EIT Food RIS Research Infrastructure Network supports aspiring public sector representatives from countries of the Southern and Eastern Europe to enhance the commercial use and visibility of their publicly funded research infrastructure relevant to the agrifood sector.

It helps develop the **research infrastructure commercialisation strategy**, identify potential agrifood partners and promote the potential for science-industry collaboration.





Food

Regional
Innovation
Scheme



Funded by the
European Union

LET'S CREATE THE FUTURE OF FOOD TOGETHER!



Become part
of our community



Share
your ideas



Help us transform
the food sector

FIND OUT MORE
AT [EITFOOD.EU](https://eitfood.eu)

CONTACT DETAILS
info@eitfood.eu



Siracusa



