

SKiM

**Strengthening Knowledge Management
for Greater Development Effectiveness
in the Near East, North Africa,
Central Asia and Europe**



Knowledge Portal

Valerio Graziano
valerio.graziano@cgmel.org

17th December 2020, SKiM 2020 Steering Committee Meeting



Procasur



Summary

SKIM

Strengthening Knowledge Management
for Greater Development Effectiveness
in the Near East, North Africa,
Central Asia and Europe



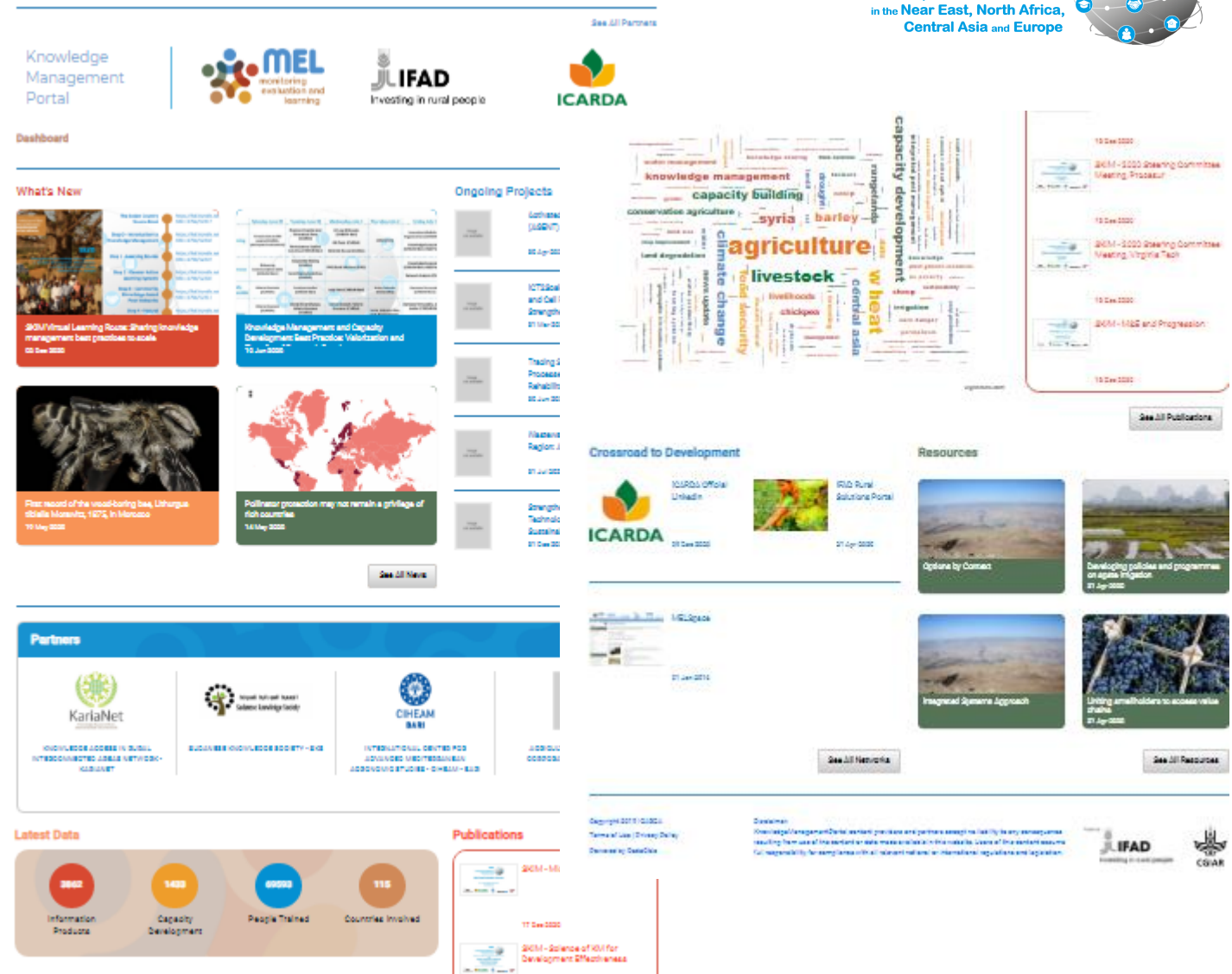
1. Why the KM Portal

- From Knowledge to Partnership
- Tracking Outreach
- Tracking Engagement

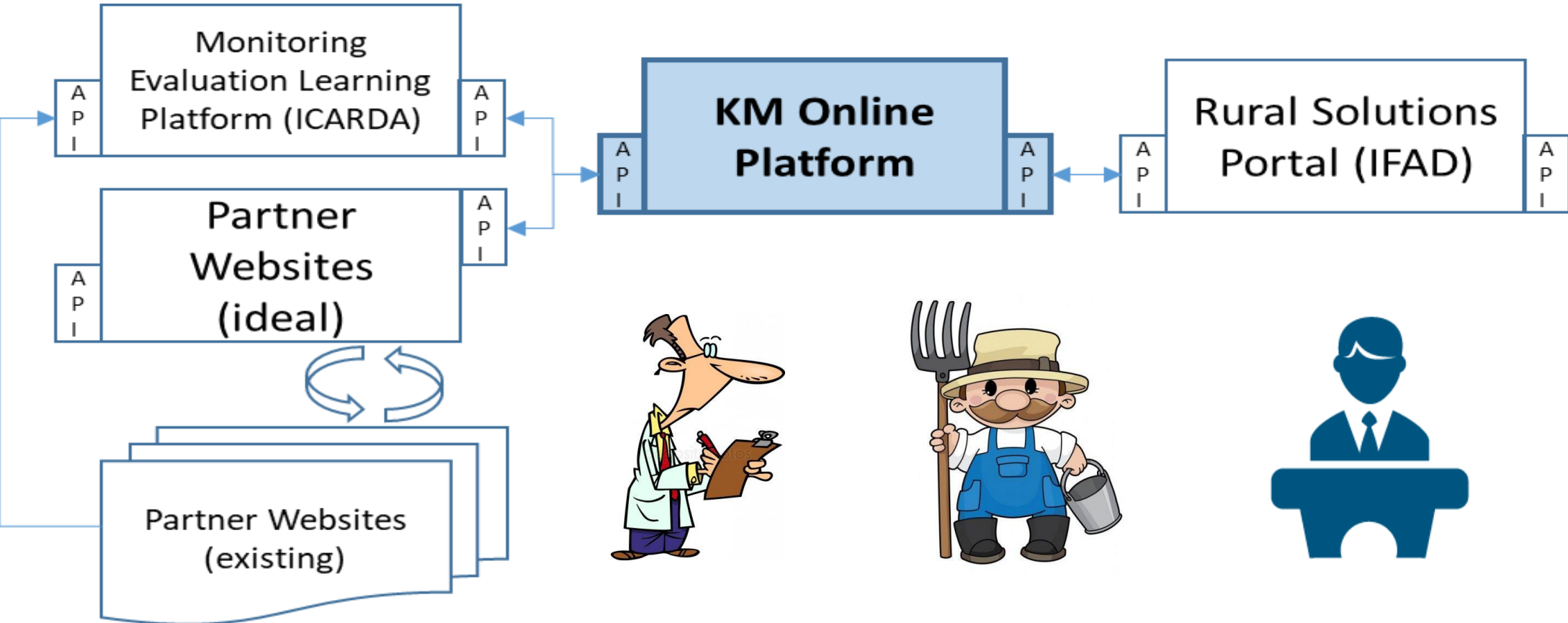
2. KM Portal 2020 Numbers

3. Interoperability Perspectives

4. Q&A



1. From Knowledge to Partnership



Knowledge -> Partnership?

1. From Knowledge to Partnership

Institutional Websites and Repos



IRAS - SAUM
INSTITUTIONAL REPOSITORY IN AGRICULTURAL SCIENCES

Welcome to IRAS SAUM!

IRAS SAUM is the Institutional Repository in Agricultural Sciences of the State Agrarian University of Moldova that collects, preserves and provides access to articles published in the scientific journals, annals, conference and workshop papers, doctoral theses, educational materials created by academic community. IRAS is included in OpenDOAR, ROAR and DuraSpace Registry.

Search DSpace

Go



University of Khartoum

University of Khartoum Repository

Welcome to University of Khartoum (UoK) digital repository! Access UoK intellectual output here. Khartoum Space is a platform that enables our community members to organize and preserve their research online as well as it gives our visitors, researchers and the academia at large a better access to research conducted at UoK. Khartoum Space is the result of the pilot project OASCIR (documentation of this project can be found at <http://uofkoascir.blogspot.com>)

Enjoy and fulfill your need to know!

Share

SHARE

Search DSpace


Go

Accueil Actualités Agenda Chaînes de Valeur Agricoles Questions / Réponses Femme Rurale S.N.F.R.A Services Aux Producteurs


KM Portal

Knowledge Management Portal


See All Partners



MEL
monitoring
evaluation and
learning



IFAD
Investing in rural people



ICARDA

Dashboard

Login

What's New

Ongoing Projects

Knowledge Management and Capacity Development Best Practice: Valorization and 10 Jun 2020

First record of the wood-boring bee, Lithurgus ibidialis Muesebeck, 1875, in Morocco 19 May 2020

Predator protection may not remain a privilege of rich countries 10 May 2020

Advantage of using crop wild relatives lies across multi-environment test sites 11 May 2020

See All News

See All Projects

Partners

STATE AGRARIAN UNIVERSITY OF MOLDOVA - IASIM

OFFICE NATIONAL DU CONSEIL AGRICOLE - ONCA

MINISTRY OF AGRICULTURE AND NATURAL RESOURCES

INTERNATIONAL CENTER FOR AGRICULTURAL RESEARCH IN THE DRY AREAS - ICARDA

See All Partners

IFAD Portal

BACK TO IFAD.ORG

IFAD

REGISTER

Sign

RURAL SOLUTIONS PORTAL

HOME ABOUT SOLUTIONS ENGAGE CONTACT US HELP

Harvest-IT: a "gateway to information" for farmers in the Arab States, Europe and the CIS region

Offline access to country-specific information on a range of agricultural topics.

SEE SOLUTION

Rural development in the Arabian Peninsula

Technology transfer to enhance rural livelihoods and natural resource management.

SEE SOLUTION

Uniting smallholders to access value chains

A collective approach to commercializing small-scale agriculture.

SEE SOLUTION

Conservation Agriculture in Moldova

Adapting to climate change through soil-friendly agricultural practices.

SEE SOLUTION

Boosting food security through multi-national innovation 'corridors'

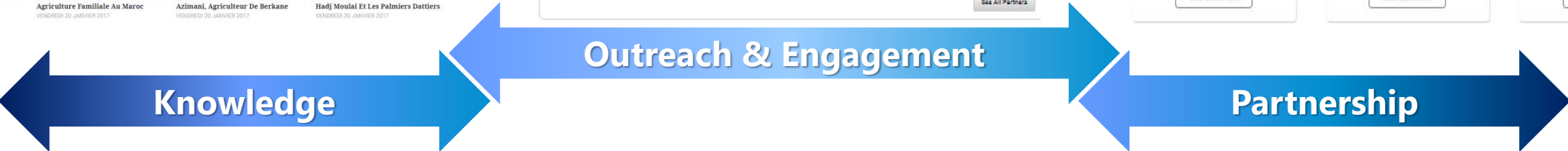
Environmentally similar countries can pool resources to accelerate agricultural development.

SEE SOLUTION

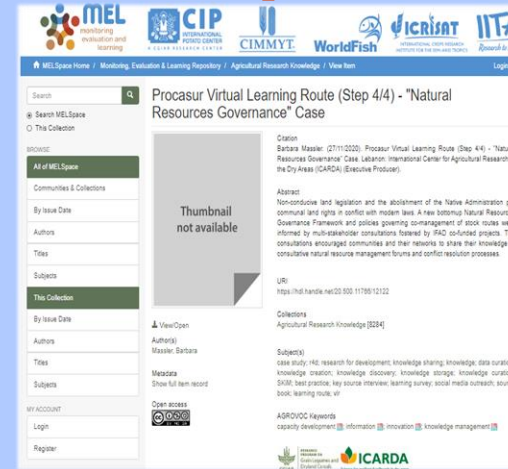
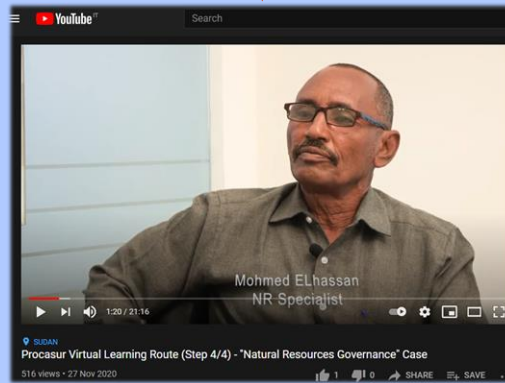
Enhancing food security in Somalia through diaspora investment in agriculture

Diaspora communities act as powerful agents of development for their country.

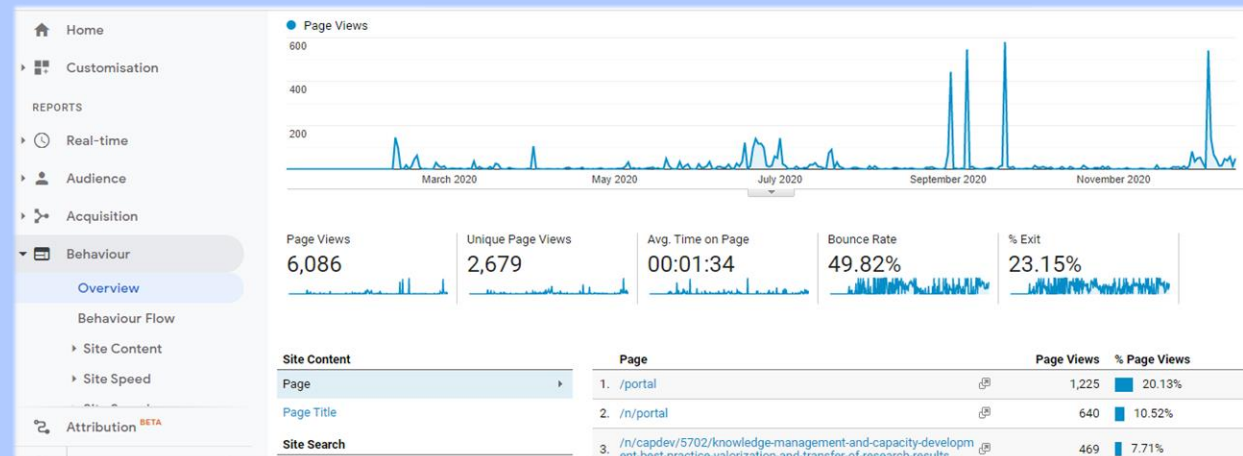
SEE SOLUTION



1. Tracking Outreach



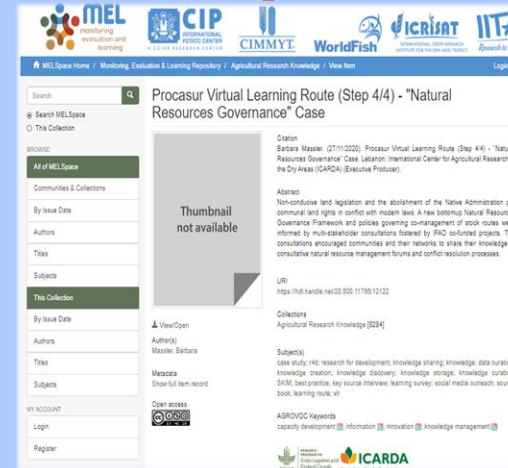
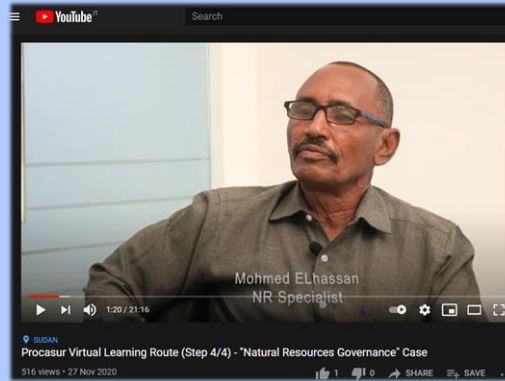
**Open Access
Content**



Traffic

Metrics

1. Tracking Engagement



**Open Access
Content**

The Colors of the Donut

- Policy documents
- News
- Blogs
- Twitter
- Post-publication peer-reviews
- Facebook
- Sina Weibo
- Syllabi
- Wikipedia
- Google+
- LinkedIn
- Reddit
- Research highlight platform
- Q&A (Stack Overflow)
- Youtube
- Pinterest
- Patents

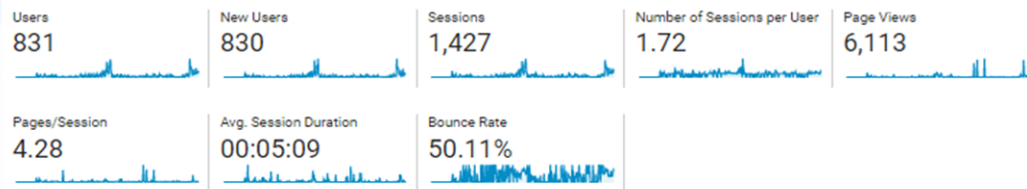
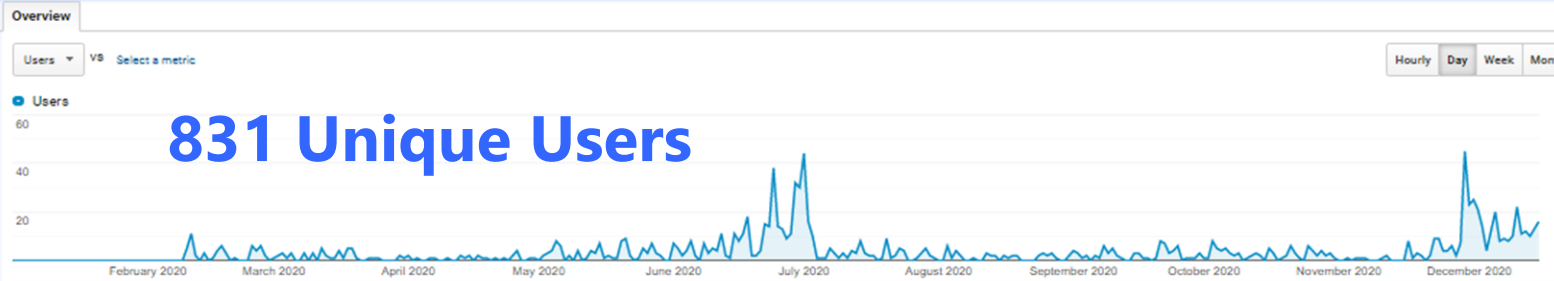


AltMetrics

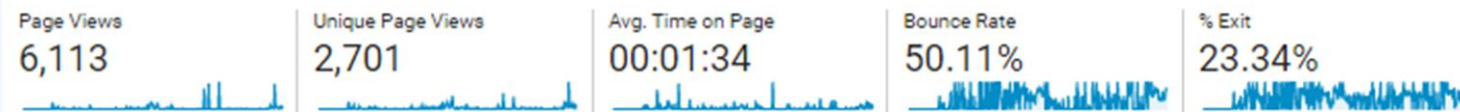
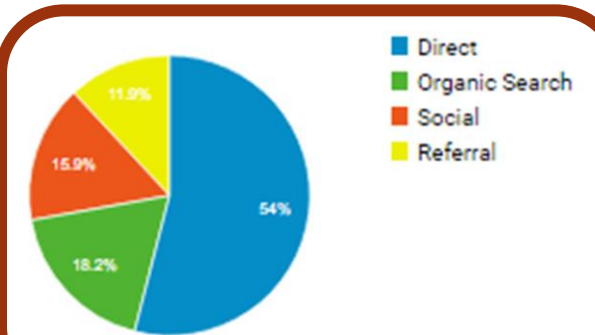
Traffic

2. Knowledge Portal 2020 Numbers

Audience – Acquisition – Behaviour



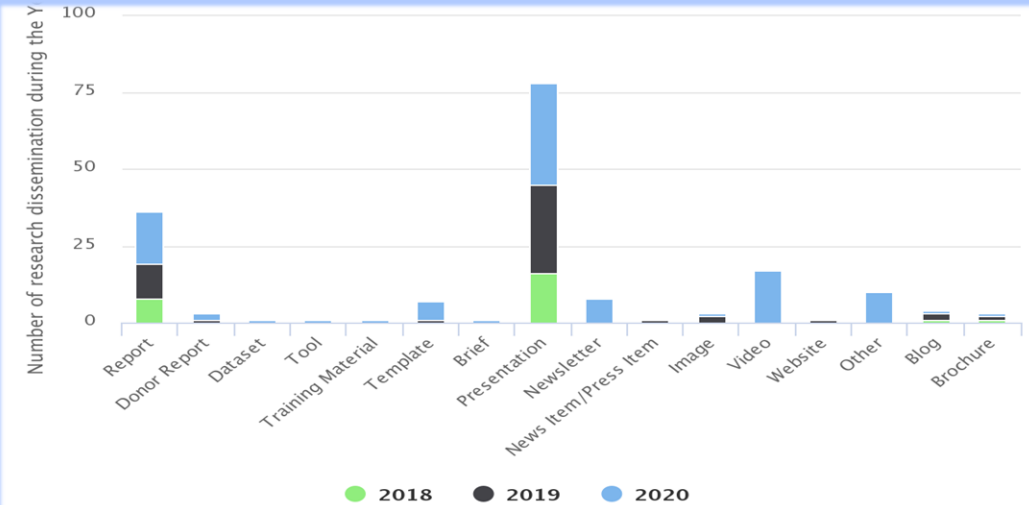
Top Channels



466 (54%) Direct
157 (18%) Organic
137 (16%) Social
103 (12%) Referral

3. Interoperability Perspectives: Visualizing the Knowledge Flow

Lists of Publications - Infographics - Collaboration Networks - Geo-Scope - Tailored Reporting

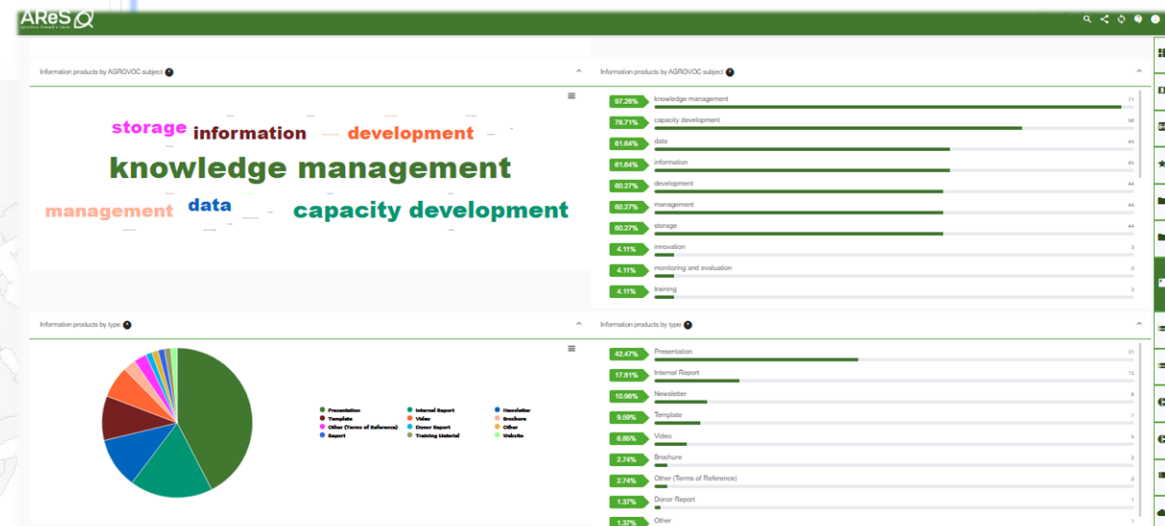
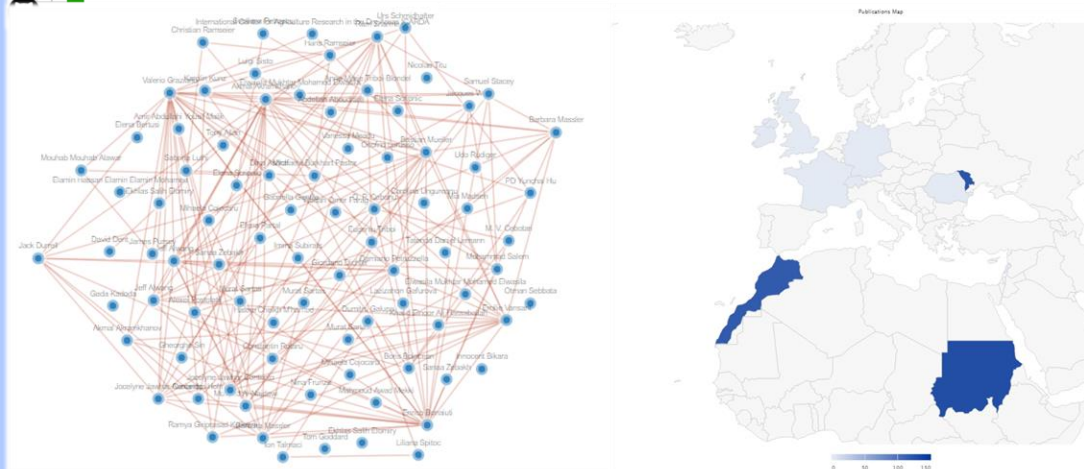


#22427 - SKiM - 2020 Virtual Learning Route Social Media Toolkit

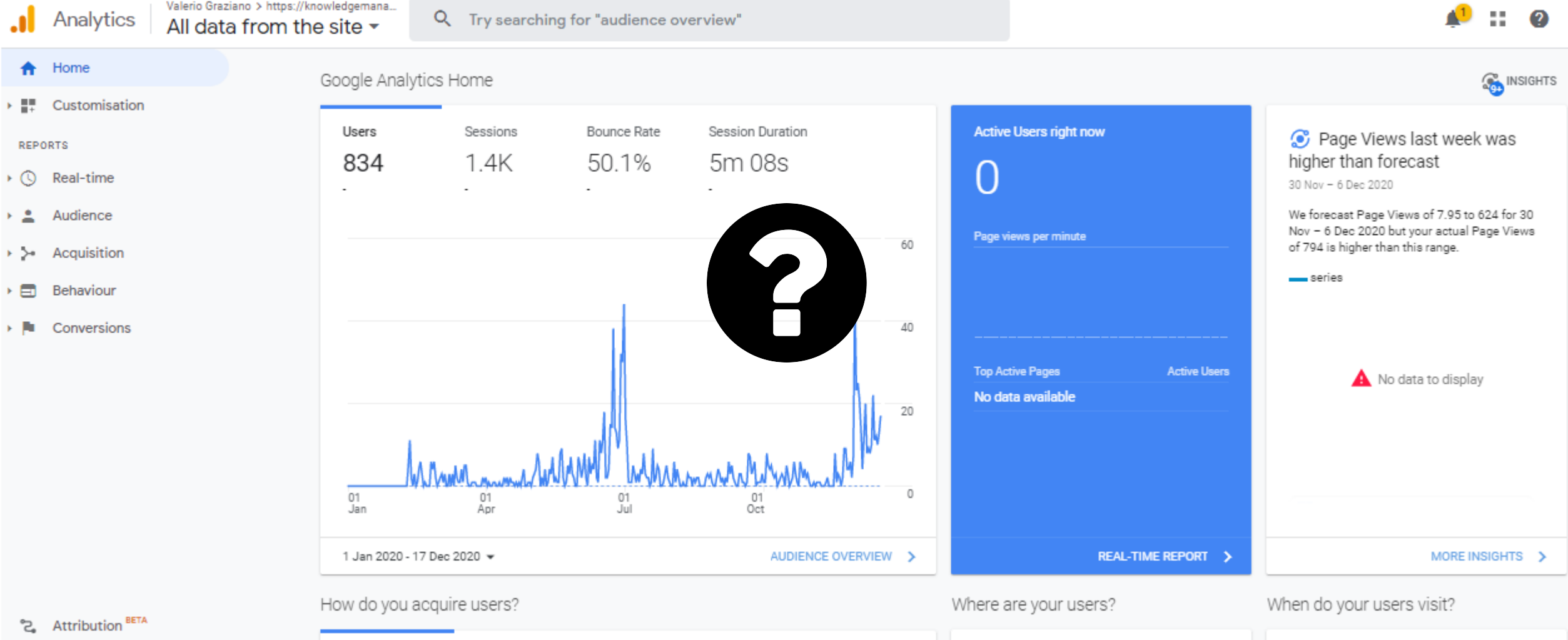
Valerio Graziano, James Pursey, Dina Ashraf, Mouhab Mouhab Alakwar, (28/11/2020), SKiM - 2020 Virtual Learning Route Social Media Toolkit[tools].

Type: Tool | File Type: pdf | Publication Date: 2020-11-28 Reporting CRP: CRP on Grain Legumes and Dryland Cereals Mapped CRP: CGIAR Strategic Results Framework Related, CRP on Grain Legumes and Dryland Cereals Views: 45 Downloads: 29

Project: Strengthening Knowledge Management for Greater Development Effectiveness in the Near East, North Africa, Central Asia and Europe



Questions and Answers



SKiM

**Strengthening Knowledge Management
for Greater Development Effectiveness
in the Near East, North Africa,
Central Asia and Europe**



Thank You



Procasur

