

ISSUE 3

FEBRUARY 2020

# SKIM PROJECT NEWSLETTER

Strengthening Knowledge Management for Greater  
Development Effectiveness



**SKIM'S CAPACITY  
NEEDS ASSESSMENT**

PURPOSE, METHODS, TIMELINE

Pg. 2

**SKIM'S CAPACITY  
NEEDS ASSESSMENT**

FINDINGS AND NEXT STEPS

Pg. 3

**NATIONAL WRITESHOPS  
AND INNOVATION PLANS**

OVERVIEW AND VIDEO

Pg. 4

## CAPACITY NEEDS ASSESSMENT

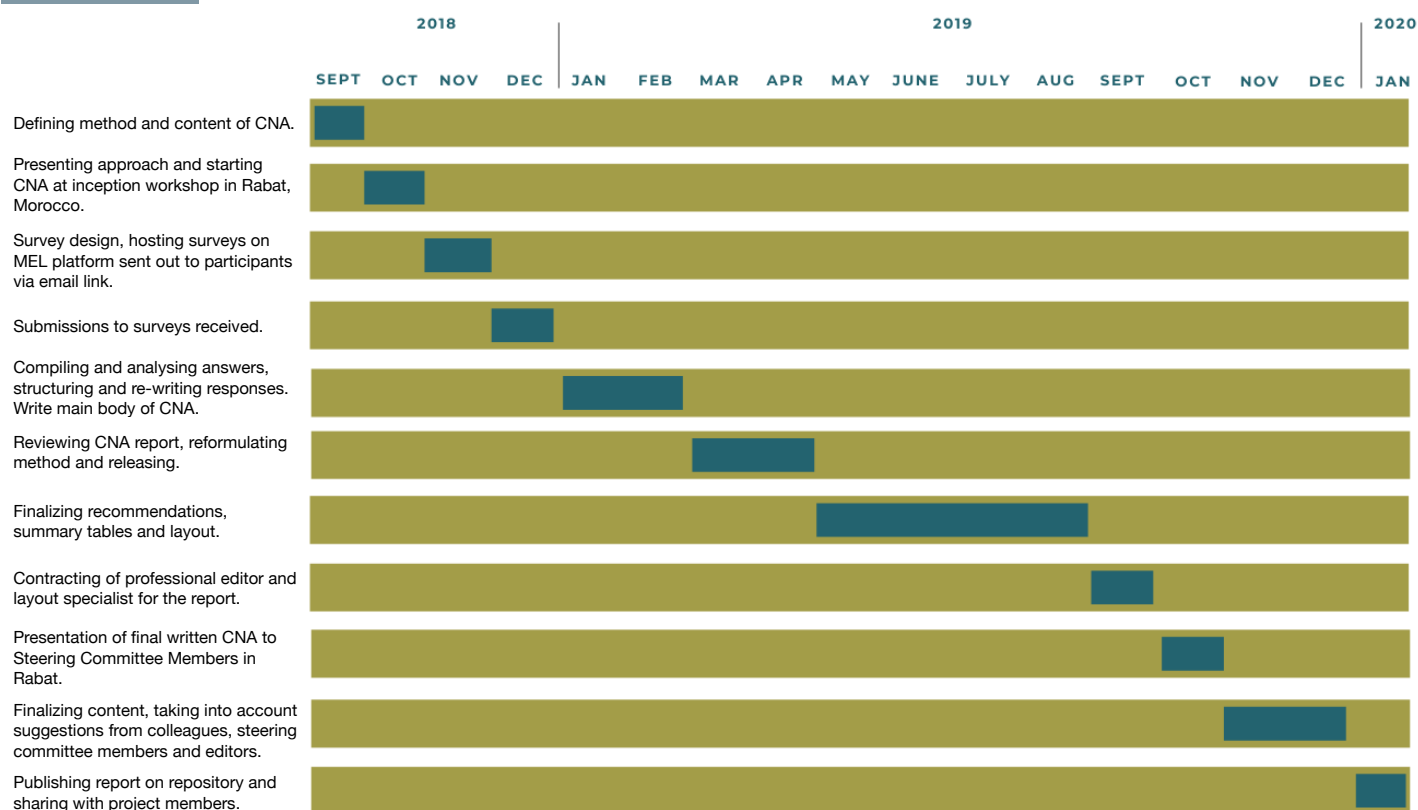
## PURPOSE

The **Capacity Needs Assessment (CNA)**, completed as part of the SKIM project as part of a process to identify knowledge management (KM)-related gaps in institutions engaged in the initial steps of the project. The major purpose of the activity was to undertake an assessment and determine baselines for the current state of KM, knowledge sharing, and learning needs in target organizations in Moldova, Morocco and Sudan. The assessment allowed for a diagnosis of present KM- related practices and benchmarks for improvement.

## METHODS

The CNA was launched at the SKIM inception workshop, held in October 2018 at the ICARDA office in Rabat, Morocco. At the workshop, **face to face meetings** were held with stakeholders from each target country to identify priorities for KM system improvements. An **online survey** was also sent out, asking stakeholders to use an **organizational scoring system** to evaluate capacities related to policy, knowledge, partnership, and implementation. The results from both the in-person workshops and online survey were used to determine a **KM baseline for the SKIM project**. From this baseline, recommendations were made to inform the design of capacity development activities for each target organization across the three project countries.

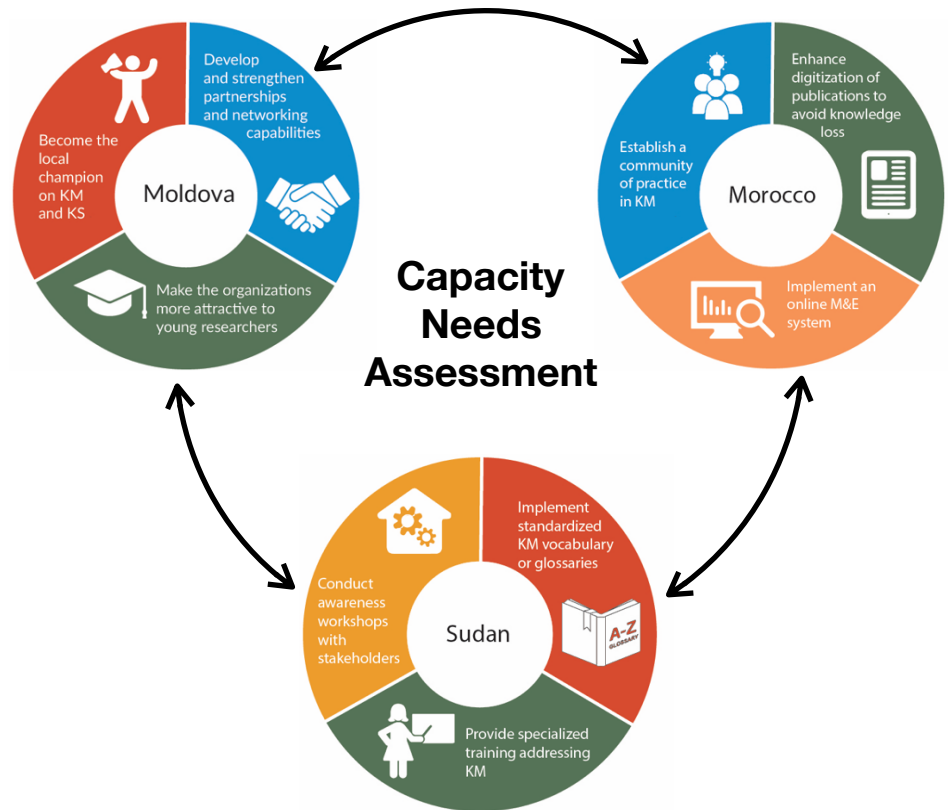
## TIMELINE



## FINDINGS

This figure outlines the **three recurring recommendations and key themes** from the CNA results for organizations within each project country. For a full list of recommendations, please follow the link to the full report, featured below.

These recommendations will inform the content of capacity building activities to be planned and held in 2019 - 2022. Such activities can include online training courses, symposia, and learning routes.



## NEXT STEPS

The results of the CNA will be used to:

- Design future capacity development activities tailored to the needs of target organizations
- Build an international KM Community of Practice (CoP) among participating institutions
- Develop trainings on KM and KM best practices around specific areas related to policy, skills and tools
- Inform the **Innovation Plans** for each country, along with the results from the **national writeshops** that were held throughout 2019. See an overview on page 4 .

WHERE CAN I LEARN MORE? CLICK BELOW FOR LINKS TO THE...



[CNA BRIEF](#)



[CNA FULL REPORT](#)



[CNA BLOG](#)

## INNOVATION PLANS AND NATIONAL WRITESHOPS OVERVIEW

## WRITE-SHOPS

The “National Writeshops to Develop Capacity Building and Innovation Plans” for Moldova, Morocco and Sudan were conducted to gather the information needed to inform the Innovation Plans, which will link their proposed solutions with the Capacity Needs Assessment (CNA). The writeshops were conducted with a participatory approach to gather inputs from the institutions and provide training. The combination of several knowledge probing methodologies effectively elicited insights on the institutions needs and improvable assets. Read the full report [here](#).



*Sudan National Writeshop, 22 October 2019*

**FOR WRITESHOPS VIDEO:**

[DOWNLOAD](#) [YOUTUBE](#)

## INNOVATION PLANS

The “Capacity Development and Innovation Plans” are the final step of the needs assessment and recommendation development process. After evaluating KM assets of the institutions identified through face-to-face meetings with representatives, online and live surveys, and other assessment tools used throughout the CNA and National Writeshops, overall needs for KM strengthening were disaggregated and specified for each organization. These needs often corresponded to one of three categories: policy, training, technology. The Innovation Plans identify common ground between the assets and needs of participating institutions in each country, and sets the stage for future multi-stakeholder KM activities that enhance KM development. The Innovation Plans will be soon available [here](#).

## UPCOMING EVENTS

**International Seminar: Agriculture Facing Climate Change**

*Hosted by IAV Hassan II (Morocco) , March 15- 22, 2020 - find event details [here](#)*

**African Regional Conference on Irrigation and Drainage**

*Hosted by IAV Hassan II (Morocco) , March 16- 19, 2020 - find event details [here](#)*

**Don't miss any news from the SKIM project! Find past newsletters here: [Issue 1](#) [Issue 2](#)**

## SKIM PROJECT IMPLEMENTING PARTNERS



Author: Emilie Vansant, Knowledge Management Research Fellow  
ICARDA, Monitoring, Evaluation and Learning  
email: [emilie.vansant@cgmel.org](mailto:emilie.vansant@cgmel.org)  
Photo Credit: ICARDA