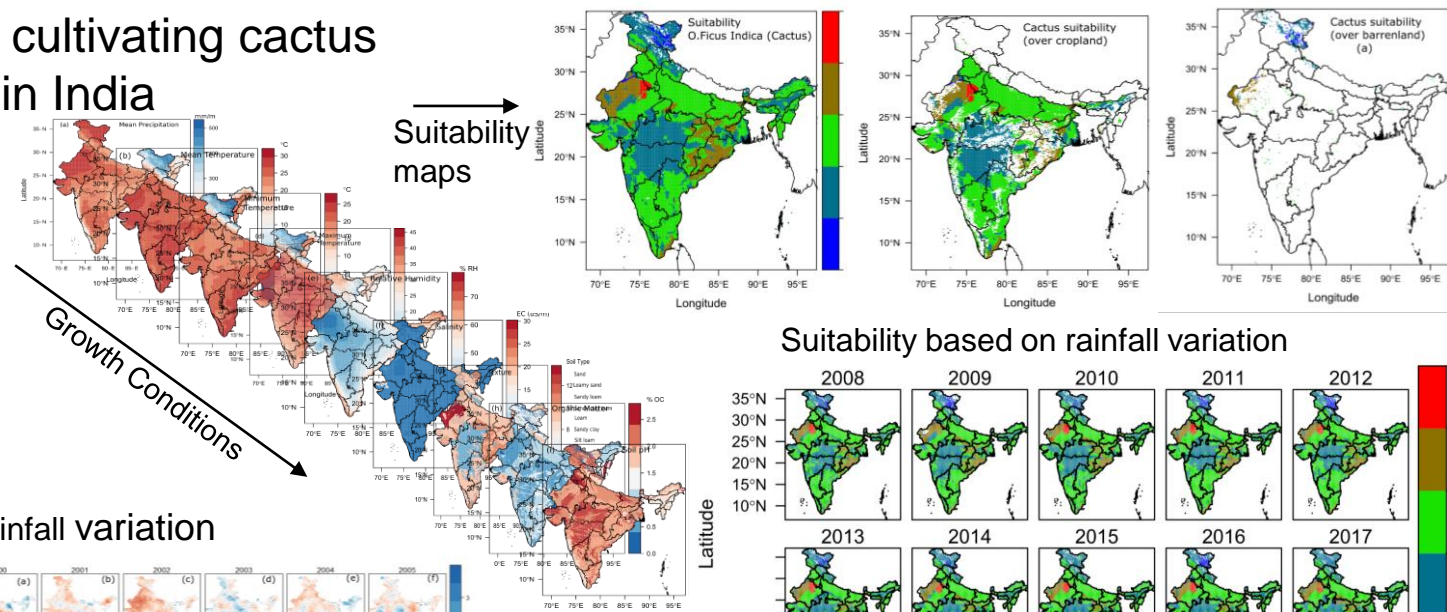
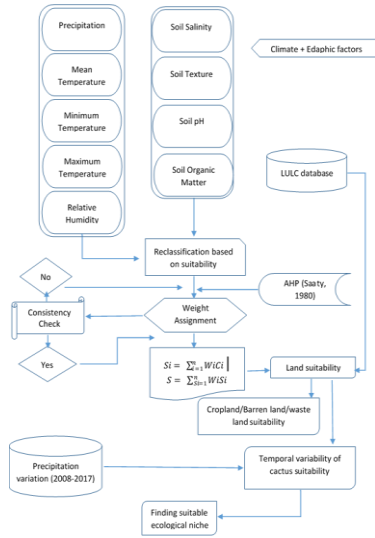


# Finding a suitable niche for cultivating cactus pear (*Opuntia ficus-indica*) in India



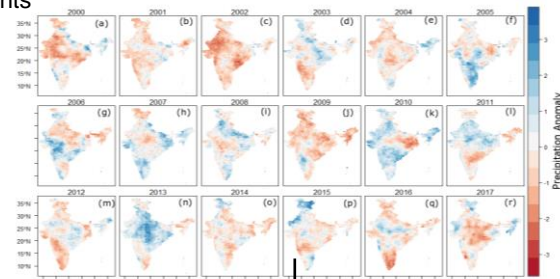
## Methods

The analytical hierarchical process (AH) was used to delineate the suitable niche for cactus by interlinking of the various factors influencing the growth of cactus in arid and semi-arid environments

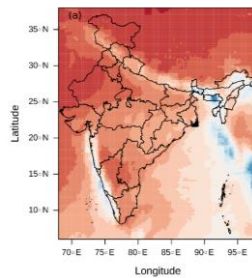


Approach used for mapping cactus suitability

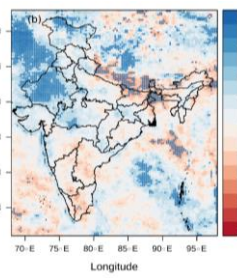
## Rainfall variation



### Mean Rainfall

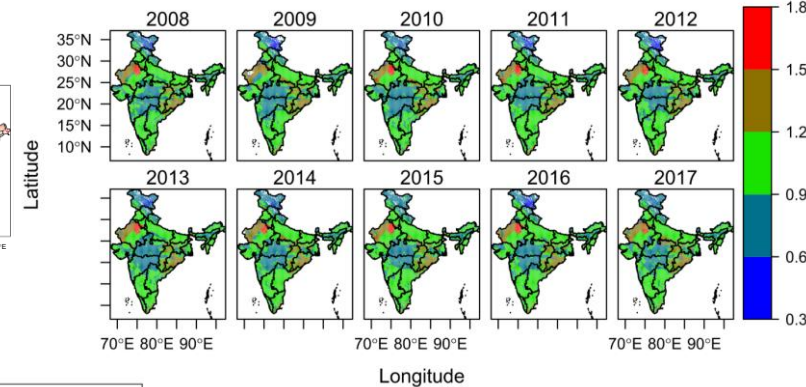


### Rainfall trend



Dots in the image show significant trend in rainfall amount

## Suitability based on rainfall variation



Results shows that 15% of the total geographic area 'highly to very highly suitable' for cultivating cactus. Of which nearly 14% area falls within the croplands which is highly suitable as an intercrop or bund planting especially in Rajasthan, Chhattisgarh, and Odisha. The drier croplands, barren lands and wastelands generally fall into the highly to moderately suited land class for cultivating cactus.

Acharya P., Biradar C\*, Louhaichi, M., Sawsan, H., Moyo, H., Ghosh, S., Sarker, A. 2019. Finding a suitable niche for cultivating cactus pear (*Opuntia ficus-indica*) in India. ICARDA, 2019.