

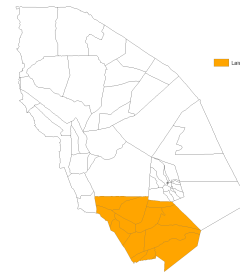
# Index in Laisamis

Data up to 22 Mar 2013 - 6 Apr 2013

This page provides the update on the predicted livestock mortality index and the summary of the underlying data in Laisamis for March - September 2013 (Long Rain Long Dry, LRLD) insurance coverage period based on the data up to 22 Mar 2013 - 6 Apr 2013. For information on the definition of these variables, see <http://hdl.handle.net/10568/3408>.

Table 1. Summary

Index Area	Laisamis
Year	2013
Season	LRLD
Date of the most recent data	22 Mar 2013 - 6 Apr 2013
Predicted Livestock Mortality	0.05
Czndvi_pre	-2.09
Czndvi_pos	-1.80
CNzndvi	1.02
CPzndvi	0.47



Laisamis

For the details on index color, click [here](#).

Figure 1. ZNDVI in Laisamis from October 2012 to present

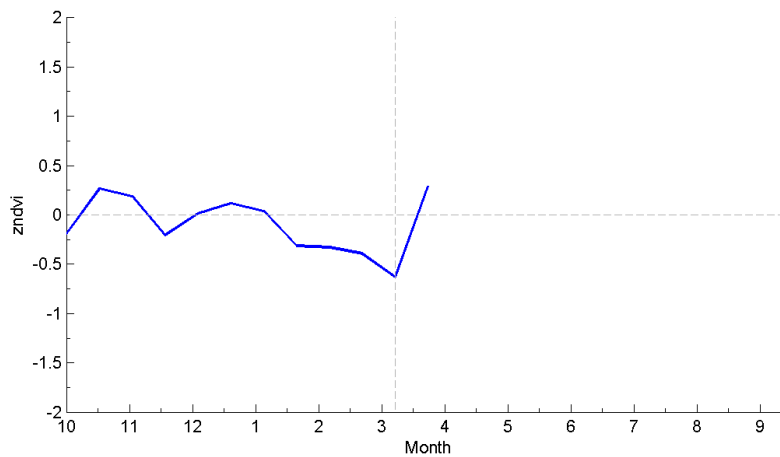
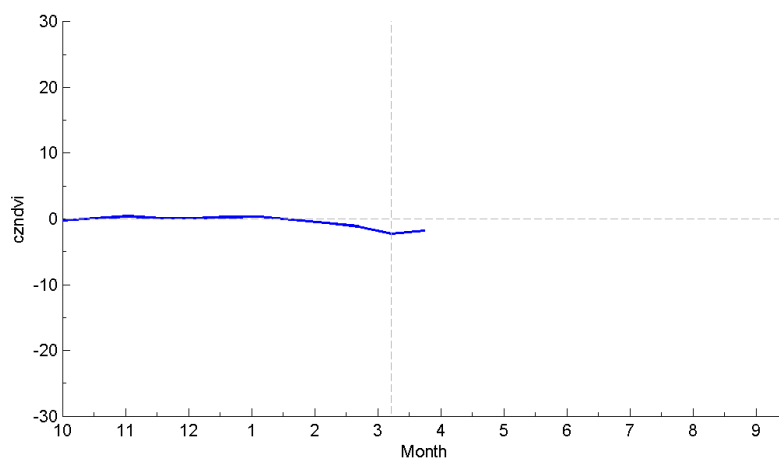


Figure 2. Czndvi in Laisamis from October 2012 to present



**Table 2. zndvi**

year	month	16-day	date	zndvi
2012	9	18	29 Sep 2012 - 14 Oct 2012	-0.20
2012	10	19	15-30 Oct 2012	0.27
2012	10	20	31 Oct 2012 - 15 Nov 2012	0.19
2012	11	21	16 Nov 2012 - 1 Dec 2012	-0.21
2012	12	22	2-17 Dec 2012	0.01
2012	12	23	18-31 Dec 2012	0.12
2013	1	1	1-16 Jan 2013	0.04
2013	1	2	17 Jan 2013 - 1 Feb 2013	-0.31
2013	2	3	2-17 Feb 2013	-0.33
2013	2	4	18 Feb 2013 - 5 Mar 2013	-0.39
2013	3	5	6-21 Mar 2013	-0.63
2013	3	6	22 Mar 2013 - 6 Apr 2013	0.29

For more information on the IBLI project, visit <http://livestockinsurance.wordpress.com>.