

Strategy, funding, monitoring and learning @ ICARDA-CGIAR

Enrico Bonaiuti ◦ MEL Team Leader

16 July 2019 - Third Sahel Regional Forum – Dakar, Senegal



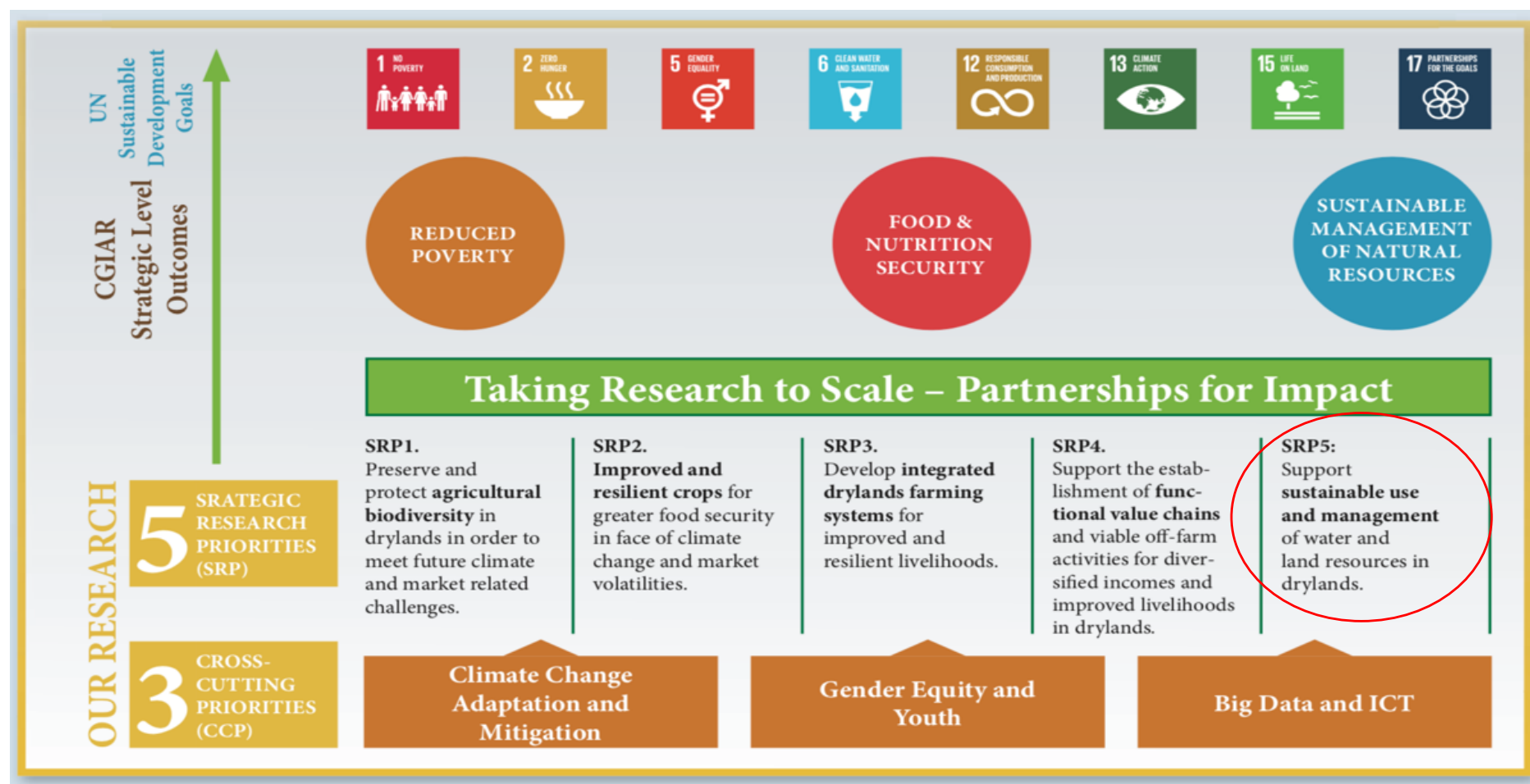
A collection of abstract geometric shapes, including circles and organic, rounded forms, in shades of blue, grey, orange, and yellow. These shapes are arranged in a cluster on the left side of the slide, partially overlapping each other.

Introduction

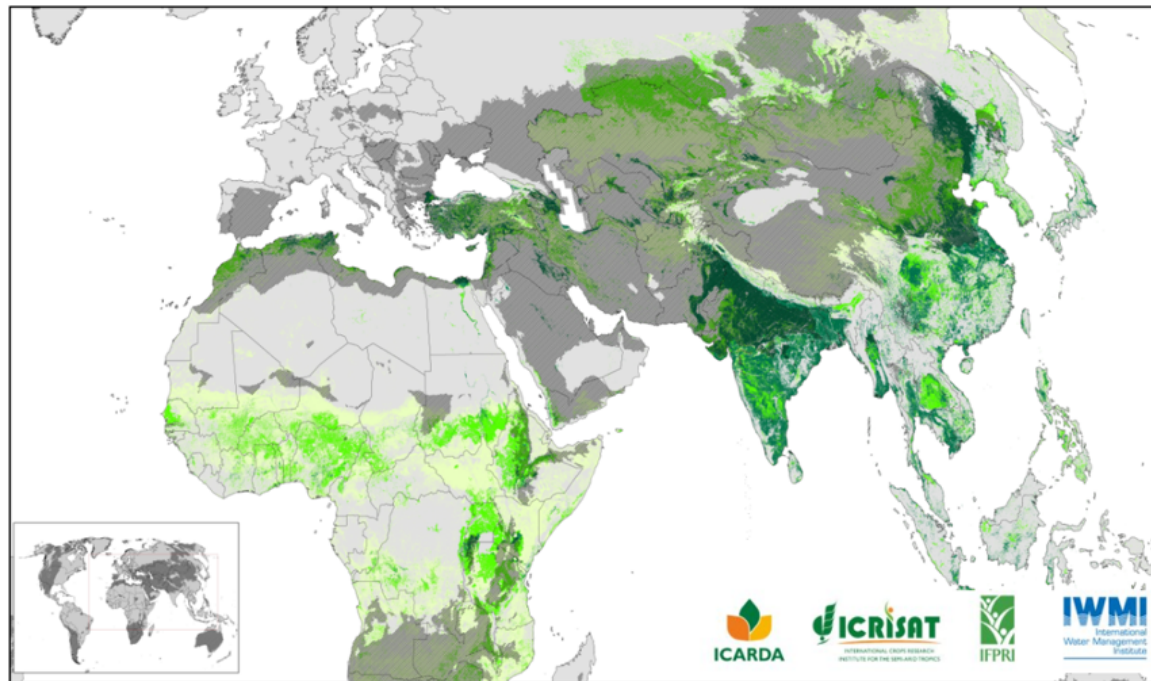
A smaller cluster of abstract geometric shapes, including circles and organic, rounded forms, in shades of blue, grey, orange, and yellow. These shapes are arranged in a cluster on the right side of the slide, partially overlapping each other.

ICARDA's Strategy 2017-2026

<http://hdl.handle.net/20.500.11766/8237>



Consortium with NARS and other CGIAR Centers



Agricultural Systems

	Irrigated
	Rainfed
	Agro-Pastoral

Key Areas:

- Food and Nutrition Insecurity
- Unemployment and Migration
- Women and Youth
- Natural Resources
- Increasingly drier and hotter

Funding Research Activities and Collaboration

<https://www.icarda.org/about-us/donors>

1. Restricted Projects
2. CGIAR Research Programs



CGIAR Research Program on Fish



CGIAR Research Program on Forests, Trees and Agroforestry



CGIAR Research Program on Grain Legumes and Dryland Cereals



CGIAR Research Program on Agriculture for Nutrition and Health



CGIAR Research Program on Climate Change, Agriculture and Food Security



CGIAR Research Program on Wheat



CGIAR Research Program on Livestock



CGIAR Research Program on Maize



CGIAR Research Program on Water, Land and Ecosystems



CGIAR Excellence in Breeding Platform



CGIAR Research Program on Rice



CGIAR Research Program on Roots, Tubers and Bananas



CGIAR Research Program on Policies, Institutions, and Markets



CGIAR Platform for Big Data in Agriculture

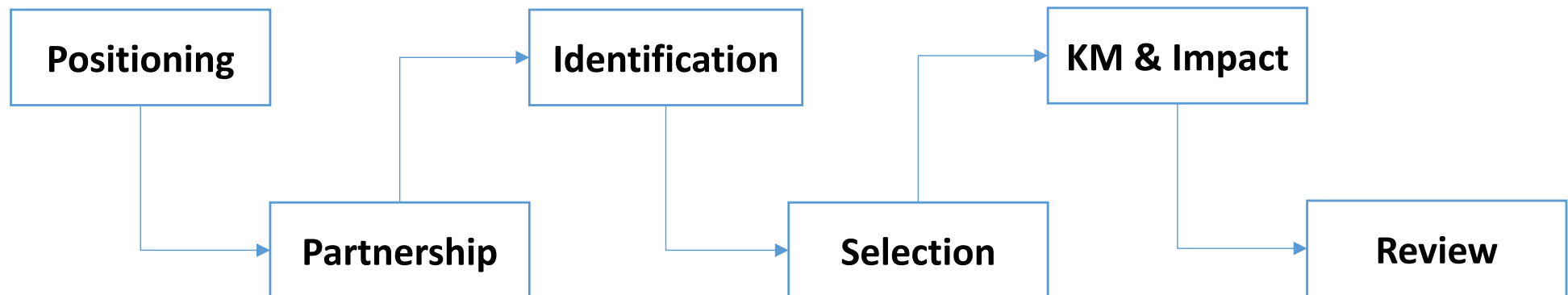


CGIAR Genebank Platform

3.

Research for Development Proposal Process

1. Thematic positioning
2. Partnership analysis across researchers' global network
3. Identification of funding opportunities (Open Call, Direct Contact, CGIAR Funds)
4. Selection of International staff for writing proposals (Donors' experience)
5. Knowledge review, baseline and impact analysis
6. Internal review process



Sustainable Solutions Developers



Baseline evidence

Monitoring, Evaluation and Learning (MEL) processes to

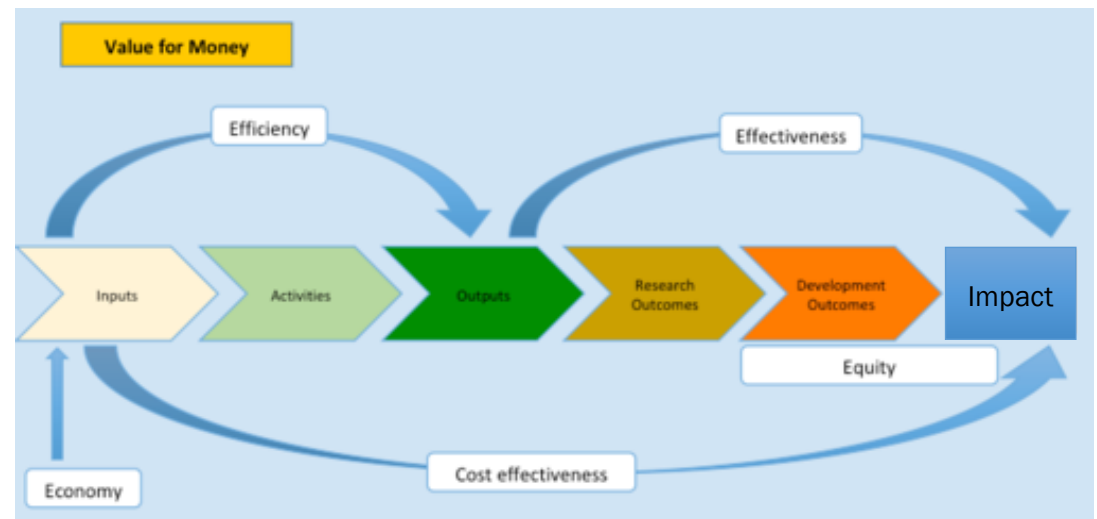
1. Communicate the impact of research while contributing to solve development challenges
2. Implement agile learning to effectively design and deliver research impact at scale through strategic partnerships
3. Demonstrate accountability, benefits and value for money in research
4. Allow evidence-based decisions on how and where targeting public spending

Outputs

-Timeliness and quality of expected research results (Knowledge, Data, Technologies, Tools)

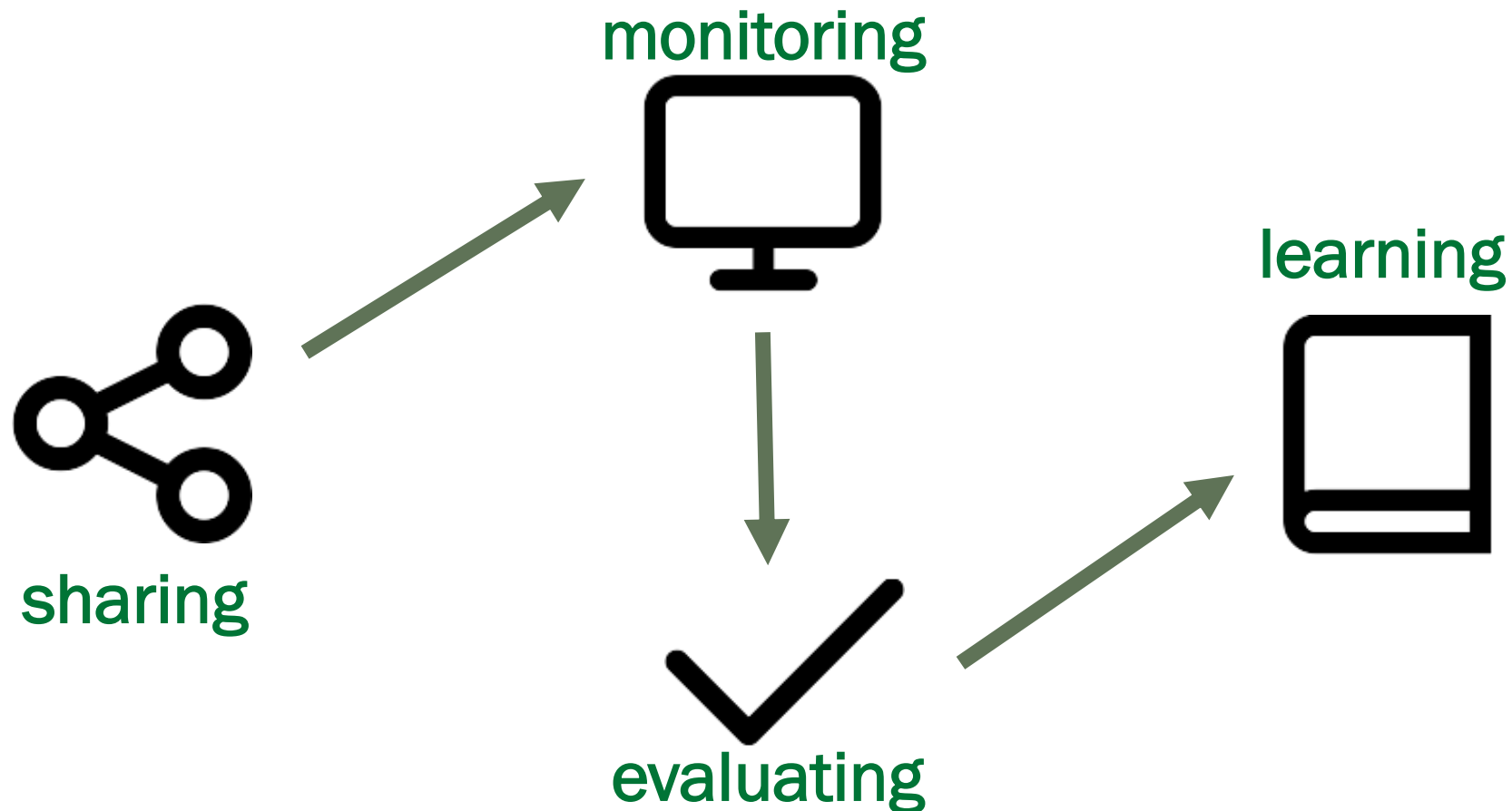
Outcomes

-Indicator based monitoring
-Participatory monitoring looking at processes and causal relationships among outputs and outcomes



The value of Knowledge Management

Knowledge Management means more than optimizing the data flow within an institution, itself an essential and valuable asset, it also means enabling and foster post-research impact over time, through:



MEL a tool for Institutions and R&D Programs

Key messages

- Rethinking M&E and KM for optimized impact reporting and time saving
- Conceptual and technical integration with framework and tools
- Response to management needs at different levels, streamline harmonized processes
- Interoperability with multiple platforms and modular/flexible development

Monitoring Progress along ICARDA Result Framework

1. Project Proposal mapping at Strategy level
2. Project Approved mapped at Research Area Level with matching to key performance indicators
Annual Plan of Work and Budget submitted
3. Full year access to report planned results
4. Annual reporting on Expected results

ICARDA - Deployment of Malt Barley and Faba Bean Varieties and Technologies for Sustainable Food and Nutritional Security and Market Opportunities in the Highlands of Ethiopia - Zewdie Bishaw - Budget: \$3,000,000										
Overview										
Output	Type	Output Responsible	Deliverable	Crops	Reporting Scientist	Center	Type	Delivery date	Files	
NARS and stakeholders capacity, through training and provision of critical facilities, strengthened 2018-09-01		L: Zewdie Bishaw	2506-seed business training courses for small-to-medium-scale seed producers	Barley, Faba bean	Girma Tesfahun Kassie	ICARDA	Presentation	2016-06-30	Type: Presentation Date: 2018-06-11	
Training Information				Supervisor	Center	Type	Implementation Period	Files		
Ethiopia Male PhD on Genetic Identity, Epidemiology and Management of Faba Bean (Vicia faba L.) Gall Disease in Ethiopia				Seid Ahmed Kemal	ICARDA	Individual Degree	From: 2018-03-01 To: 2018-06-30			
Outcome	Outcome type	Indicator	Indicator description						Indicator values	
Food and nutritional security and market opportunities of smallholder farmers enhanced	Development Outcome	Next-generation malt barley and faba bean varieties released	This indicator measures the quantity of malt barley and faba bean varieties with high yield, grain quality combined with resistance to abiotic and biotic stress released, to constitute the next generation of replacement varieties for rainfed and irrigated cropping systems.						Values	
		Farmers' access to seed of modern malt barley and faba bean varieties	This indicator measures the number of farmers (both males and females) who will have access to seed of modern malt barley and faba bean varieties as well as rhizobium inoculants through informal small seed-pack distribution systems during the project period						Values	
Productivity and production of malt barley and faba bean, through enhanced crop management technologies, improved	Development Outcome	Variety popularization and demonstration plots	This indicator measures the number of demonstration plots (0.25 Ha) planted						Values	
		Farmers aware of existing improved malt barley and faba bean varieties	This indicator measures the number of farmers who, thanks to demonstration activities, become aware of improved crop management technologies						Values	
		Barley and faba bean area planted with seed of new varieties	This indicator measures the area cropped with certified seed of new barley and faba bean varieties supplied by public, private, and farmer unions						Values	

MEL by Numbers



<https://mel.cgiar.org/>

Business Model

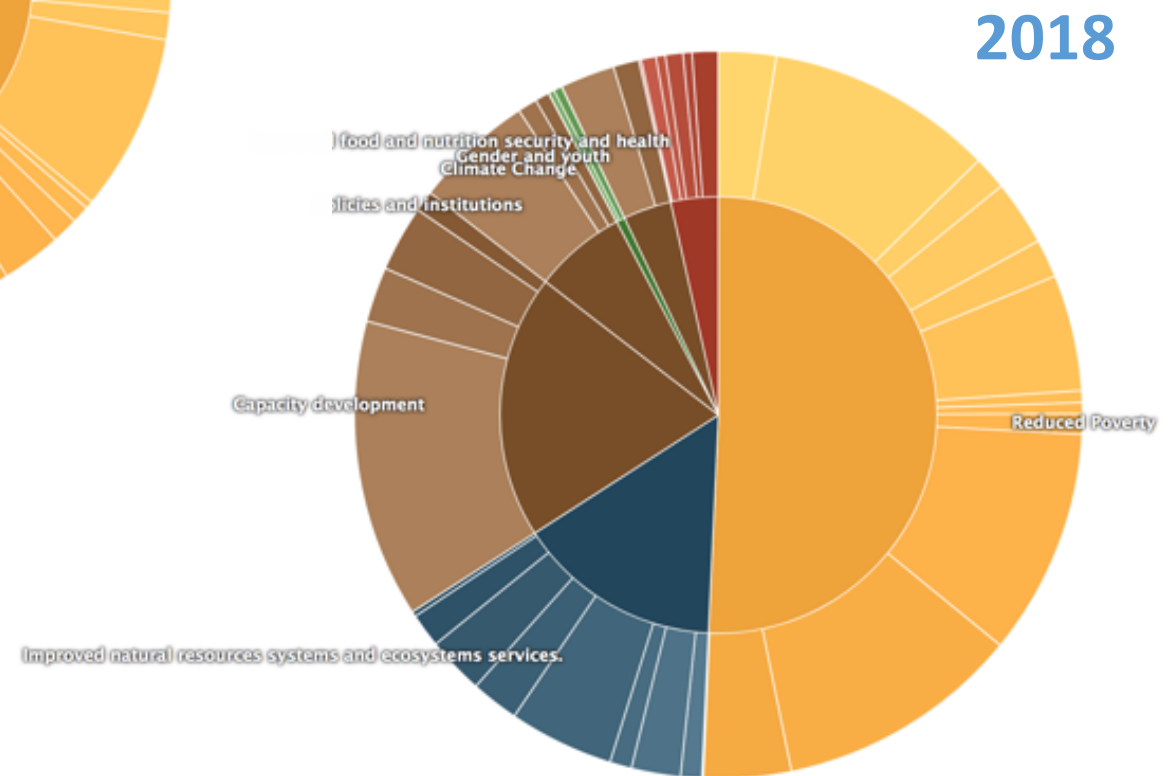
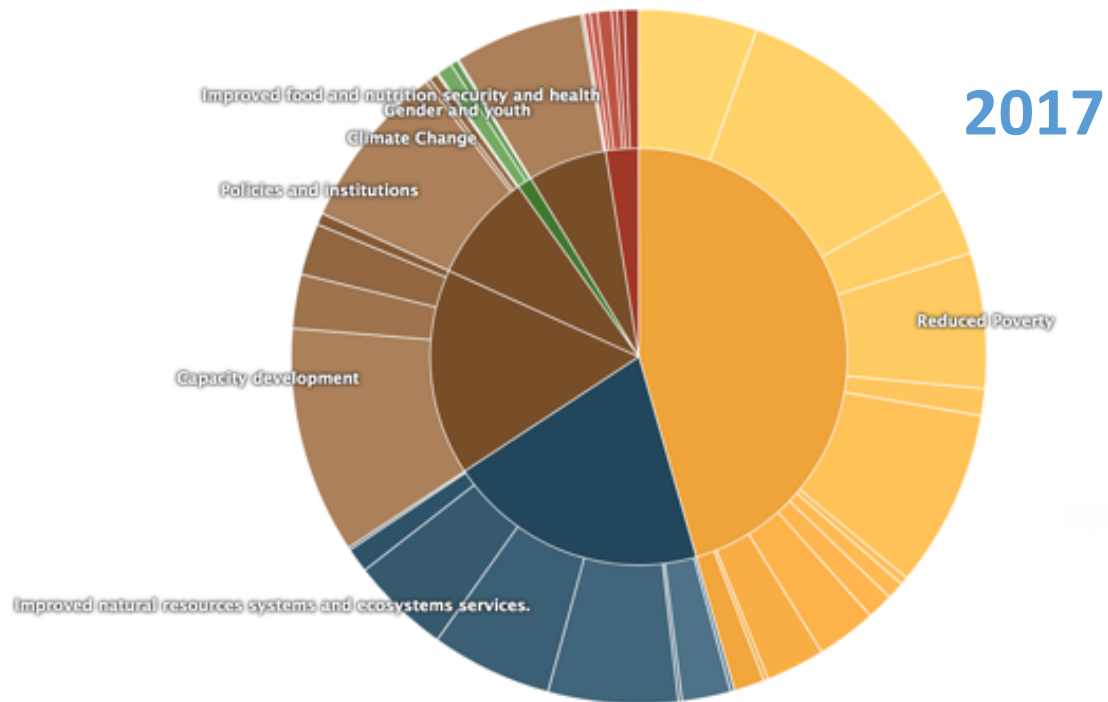
Incubation, Start-up & Partnership with the Private and NGO Sector

- ✓ Internal Staff investment
- ✓ Start-up of Young developers company
- ✓ Partnership with NGO
- ✓ Balancing the coverage among CG Centers
- ✓ Global coverage (working hours and week days)
- ✓ Sustainable solution



	Solution Creators	QA Officers	Developers	Total
ICARDA	1	3	1	5
CIP	1	1	1	3
WorldFish	1	2	2	5
IITA	1	3	2	6
Codeobia	1	0	2	3
IMMAP	1	1	2	4
Total	6	10	10	26

Portfolio analysis



Key Performance Indicators

Add Flagship Indicator

Indicator *

Enter Indicator name...

Unit of Measurement *

Select Unit of measurement...

Unit Type *

Select Unit type...

+ Add Disaggregation criteria

Disaggregation criteria *

Select Disaggregation criteria...

Aggregation Rule *

Select Aggregation Rule...

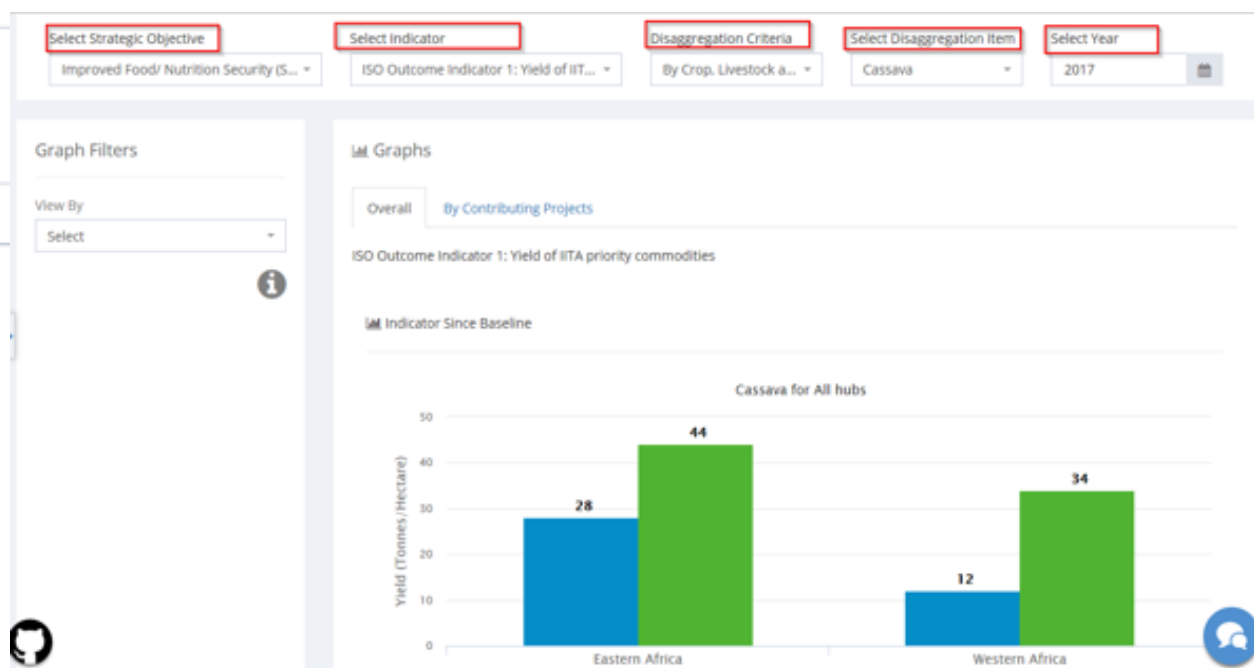
Unit Description *

Enter the unit description...

Explanation *

Enter the unit explanation...

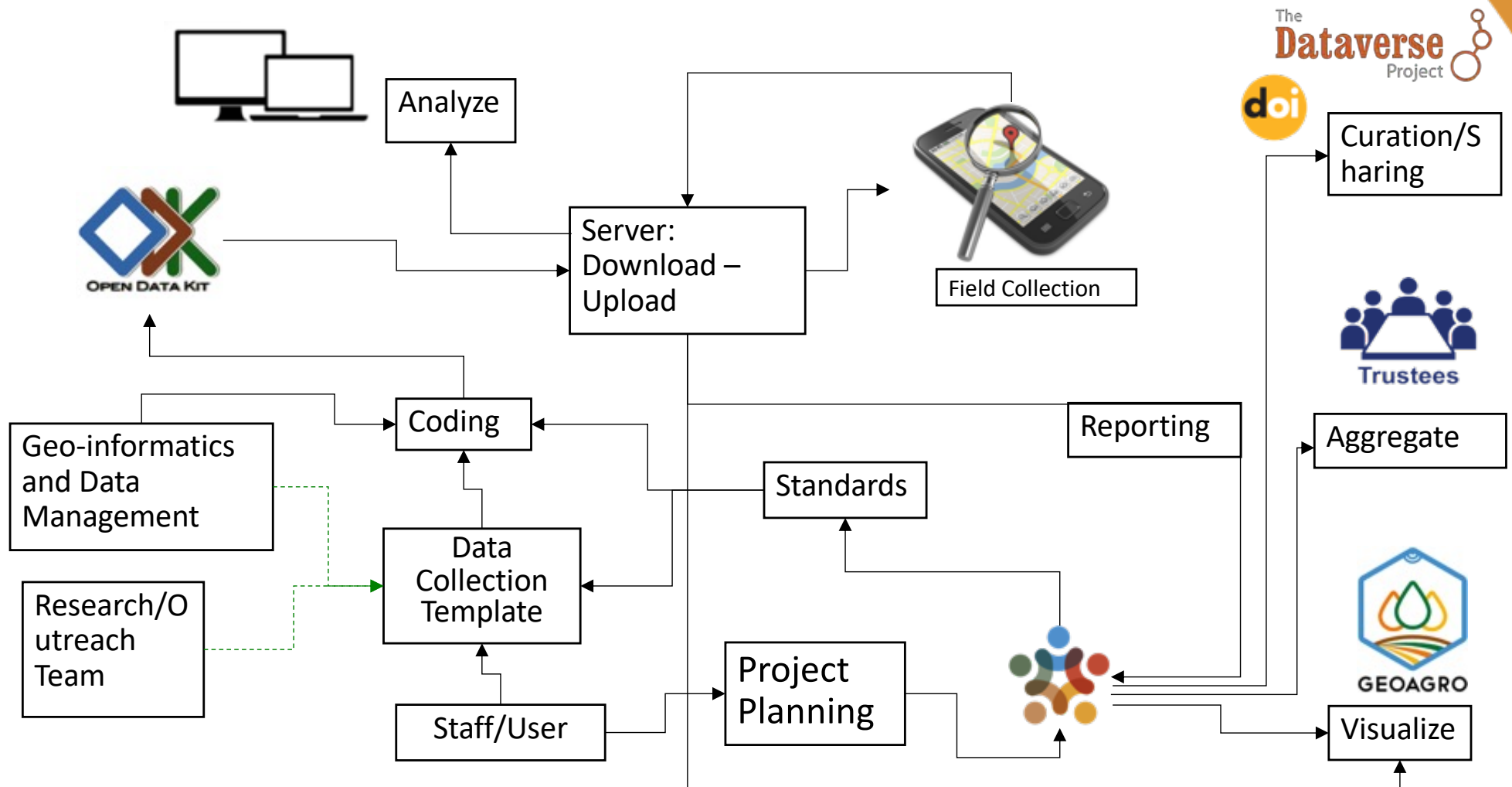
1. Impact Level / General Goal
2. Outcome Level / Specific Objectives
3. Thematic Areas and Priorities





Data Flows and Mining

Field Data Collection



Geo-Informatics Option x Context

National and Actors **target** their **investment** for Agricultural **Technologies** & Natural Resources Management **Practices**

Context-specific **evidence** available to support sound **investment decisions**

Promote **scaling** of Technologies and Practices for **socio-economic impact**

Shareable **global knowledge** applicable at **local dimension**

Spatio-temporal linkages for **evaluation** and dissemination


Flexible entry points to accommodate **users requirements**



A tool for Better Investment Decisions in Agriculture and Rural Development




Select


System-based Options by Context

Filter Options

Region
Select region

Sub-Region
Select subregion

Search country... 

Theme
Context/Driver's Database

Sub-Theme
National economic devel...

Dataset
☐ GDPCAP
☐ GDPCAP-GRW
☐ AGRI-POVERTY

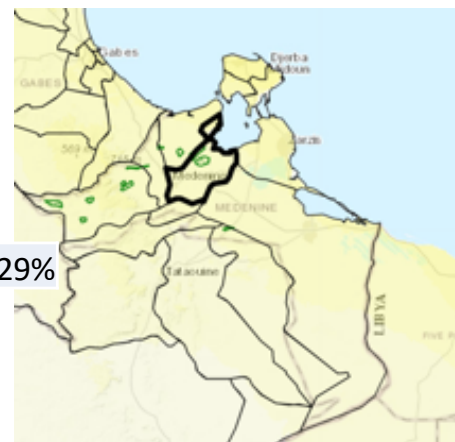
Theme
Outcome-Impact Databa...

Sub-Theme
Affected population

Dataset
☒ AFFECTED-POP
☐ AFFECTED-RPOP

Select all Deselect all

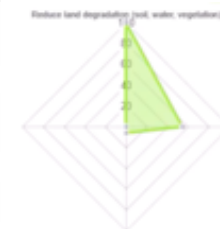
Visualize



29%

Rank

SILMs in the area of interest	Socio-economic impacts-Production
Afforestation	Slightly positive
Area enclosure	Very positive
Biological fixation of sand dunes	Very positive
Buried diffuser	Very positive
Cisterns	Slightly positive
Cisterns	Slightly positive



Scale



SLM info
Id: 33
Name: Gabion check dam
Description: Gabion check dam
SES-TYPE(s)
7: Extensive cropping systems
[View Metadata](#)

A tool for Better Investment Decisions in Agriculture and Rural Development



	Total	UNCCD PRAIS: Performance Review and Assessment of Implementation System	
Horn of Africa			
Djibouti	1	1	100%
Eritrea	5	3	60%
Ethiopia	83	0	0%
Kenya	88	1	1%
Somalia	0	0	0%
South Sudan	0	0	0%
Sudan	4	0	0%
Sahel			
Burkina Faso	53	32	60%
Cameroon	5	0	0%
Chad	4	0	0%
Mali	46	5	11%
Mauritania	3	0	0%
Niger	58	13	22%
Nigeria	0	0	0%
Senegal	45	13	29%
Total	395	68	17%

Network Analysis for Impacts

SDG(s)

Keyword(s)

The list is provided by [AGROVOC Web Service](#). You can add new subjects by typing or copy & paste them from another source, if comma separated. All new, non-AGROVOC subjects are coloured in green: please ensure these are coherent with the knowledge reported.





An Agricultural Research e-Seeker (ARes) to find, explore and visualize open repository resources

DSPACE repositories → Repository explorer → AReS configuration

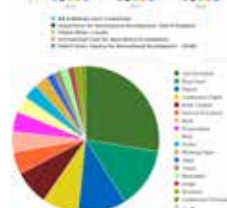
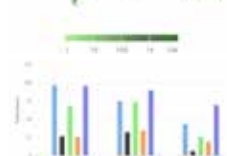
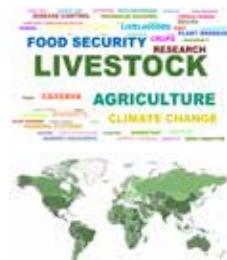
Configurable repositories and platforms

CGSpace
A Repository of Agricultural Research Outputs
• Used by 14 CGIAR centers, Research Programs and partners
• Contains about 80,000 research outputs
• More than 27 million views and downloads every year

WorldFish
• Supported by 9 CGIAR centers and Research Programs
• Facilitates monitoring of more than 800 research activities
• Credits more than 6,000 organizations

Open Repositories Explorer and Visualizer tool (OpenRXV)

- Harvest multiple repositories
- Explore and visualize search results
- Explore and visualize by metadata fields
- Explore and visualize content collections and categories
- Generate reports for queries



The Agricultural Research e-Seeker (ARes):

- Allows us to view and navigate single or multiple repository content in a visual way
- Shows relationships, patterns and trends for different metadata filters authors, countries, topics, investors, years, etc
- Incorporates public usage data from DSpace and Altmeter
- Preserves original repository configurations (good and bad)
- Exposes inconsistencies
- Will ultimately include other repository types such as Dataverse
- Is configured for 'our' metadata fields
- Open Online <https://cgspac.cgiar.org/explorer>



Get OpenRXV
on GitHub



Start Exploring
with AReS!



Peter Ballantyne 1, Moayad Al-Najdawi 3, Enrico Bonaiuti
2, Valerio Graziano 2, Alan Orth 1, Jane Poole 1,
Mohammed Salem 3, Abenet Yabawork 1
International Livestock Research Institute (ILRI) 1,
International Research for Agricultural Research in Dry
Areas (ICARDA) 2, CodeObia 3
Valerio.Graziano@cgmel.org, A.Yabawork@cgiar.org



Funding for this work was provided by CGIAR Trust Fund contributors.
Creative Commons Attribution 4.0 International Licence. June 2019



Where does IFAD concentrates its effort during the last five year? And on which subjects?



Select Year «2013-2018» and Funder «International Fund for Agricultural Development» and find out!

Region and Countries are shown in the atlas, while the «Subject» filter will automatically sort for those available in the Info Products List of Results. The same list is sortable by Subject.



Are IFAD and ADB funding the same projects? If yes, what have they produced and where?



Select Funder «International Fund for Agricultural Development» then check if «African Development Bank» appears in the Funder filter too. If no, they are not related in our repositories, if yes select it!

The Info Products List of Results and the Info Products Overview will provide you with all information.

Thank you

www.mel.cgiar.org



RESEARCH
PROGRAM ON
Grain Legumes and
Dryland Cereals



RESEARCH
PROGRAM ON
Roots, Tubers
and Bananas



RESEARCH
PROGRAM ON
Fish

