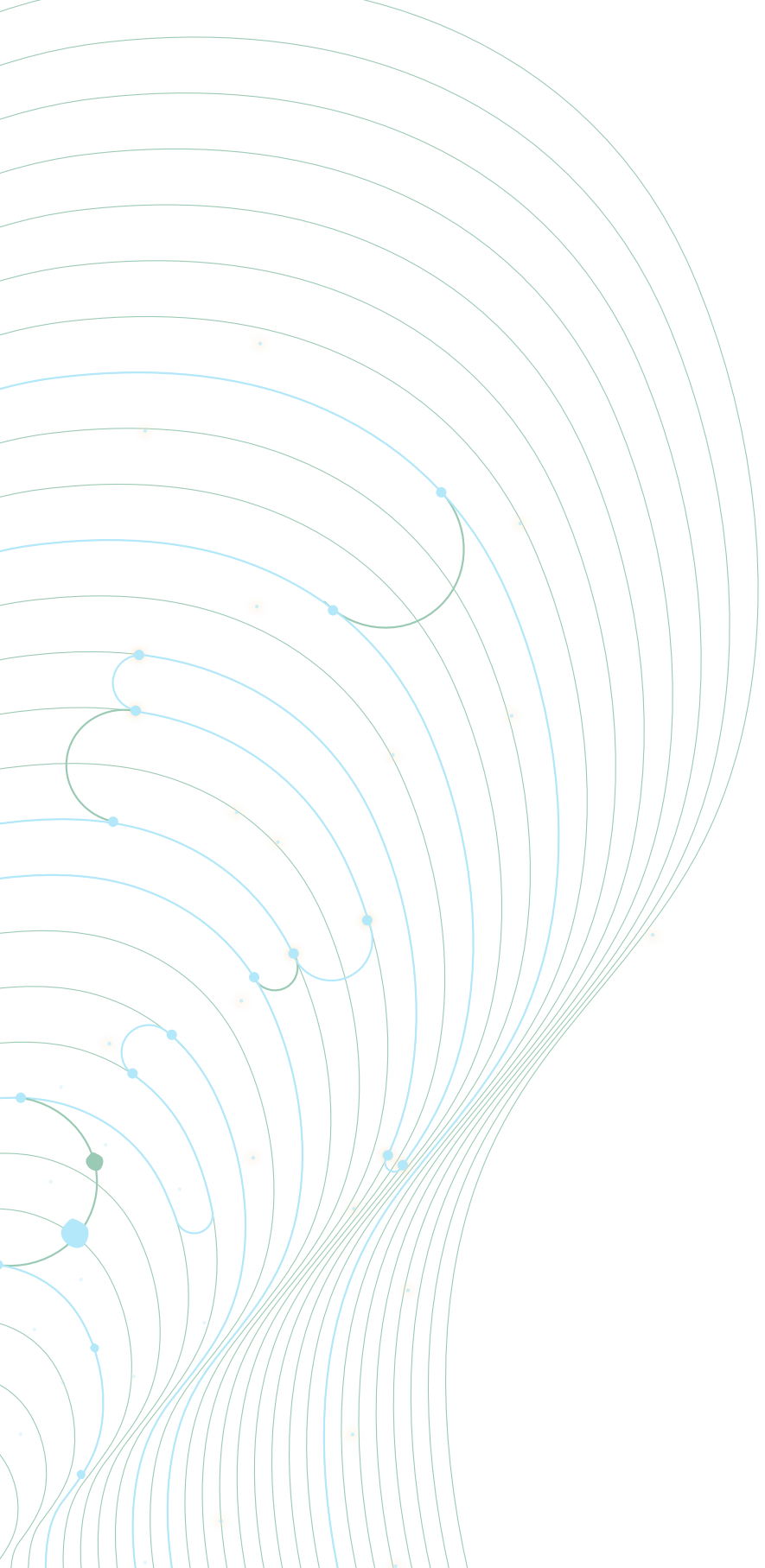




# SCALING READINESS OF THE CONSERVATION AGRICULTURE SYSTEM IN MOLDOVA

2021 April





# **SCALING READINESS OF THE CONSERVATION AGRICULTURE SYSTEM IN MOLDOVA**



## @2021 SKIM

This research was conducted as part of the Strengthening Knowledge Management for Greater Development Effectiveness (SKIM) project supported by International Fund for Agricultural Development (IFAD)



This publication is copyrighted by ICARDA, IFAD. It is licensed for use under the Creative Commons Attribution 4.0 International Licence. To view this license, visit <https://creativecommons.org/licenses/by/4.0>. Unless otherwise noted, you are free to share (copy and redistribute the material in any medium or format), adapt (remix, transform, and build upon the material) for any purpose, even commercially, under the following conditions:

### **ATTRIBUTION.**

The work must be attributed, but not in any way that suggests endorsement by ICARDA, IFAD, or the author(s).

### **NOTICE:**

For any reuse or distribution, the license terms of this work must be made clear to others. Any of the above conditions can be waived if permission is obtained from the copyright holder. Nothing in this license impairs or restricts the author's moral rights. Fair dealing and other rights are in no way affected by the above. The parts used must not misrepresent the meaning of the publication. SKIM team would appreciate being sent a copy of any materials in which text, photos, etc., have been used.

**Authors:** Murat Sartas, Boris Boincean, Mihail Rurac, and Akmal Akhramkhanov

**Key Words:** Scaling Readiness, Innovations, Scaling, Assessment, Evaluation, The Conservation Agriculture System, Moldova, East Europe

**Citation:** Sartas, M., Boincean, B., Rurac, M., Akramkhanov, A. 2021. Scaling Readiness Of The Conservation Agriculture System in Moldova. ICARDA Tashkent, Uzbekistan.

**Acknowledgement:** We would like to acknowledge Ms Mihaela Cojocaru for her guidance and significant support for the study. We would like to thank Ms Isabelle Stordeur, other IFAD colleagues, Mr Enrico Bonaiuti for assisting us to have a conducive environment for conducting the study.

**Photo on the cover:** Selectia Research Institute of Field Crops, Dorin Ceban

# ABBREVIATIONS AND ACRONYMS

<b>AR4D:</b>	Agriculture Research for Development
<b>CAS:</b>	Conservation Agriculture System
<b>CEN:</b>	Central-Eastern Europe and Central Asia
<b>CGIAR:</b>	Consultative Group on International Agricultural Research
<b>CPIU:</b>	IFAD Consolidated Programme Implementation Unit of Moldova
<b>EU:</b>	European Union
<b>FAO:</b>	Food and Agriculture Organisation of the United Nations
<b>ICARDA:</b>	International Center for Agricultural Research in Dryland Areas
<b>IFAD:</b>	International Fund for Agricultural Development
<b>ICT:</b>	Information and Communication Technology
<b>KM:</b>	Knowledge Management
<b>NASA:</b>	National Aeronautics and Space Administration of the United States of America
<b>NENA:</b>	Near East and North Africa
<b>SAUM:</b>	State Agrarian University of Moldova
<b>Selectia:</b>	Selectia Research Institute of Field Crops
<b>SDG:</b>	Sustainable Development Goals of the United Nations
<b>SKiM:</b>	Strengthening Knowledge Management for Greater Development Effectiveness in the Near East, North Africa, Central Asia and Europe

This study is a collaborative effort between SKiM, IFAD NENA and CEN teams and critical stakeholders of conservation agriculture in Moldova, including CPIU, SAUM and Selectia. It has been commissioned by IFAD as a part of the SKiM project in 2021 and was prepared between February and April 2021.

The SKiM project has been developed by ICARDA in collaboration with consortium partners, the Mediterranean Agronomy Institute of Bari - CIHEAM (Italy), Virginia Tech University (USA), and Procasur. In consultation with IFAD, the proposals submitted by the collaborators were integrated to have a comprehensive project that can improve the knowledge management systems of three target countries. This aimed to create global learning on design and implementation principles for KM projects by IFAD and other investors in the worldwide donor community in Agriculture. The project built upon IFAD's commitment to expanding its capacity development support to monitoring, evaluation, and learning systems, in conformity with thematic Cluster III of the IFAD Medium-Term Plan 2016-2018.

SKiM aims at efficient, effective, and sustainable KM processes that include co-learning partnership activities involving diverse organizations and end-users. To ensure the application of agricultural and rural solutions, end-users are engaged in the process early on in project implementation. Such inclusion fosters interactive feedback from participating stakeholders and enhances the capacity of organizations and agents to develop and utilize rural development knowledge. IFAD experience of the interventions implemented with similar stakeholders is essential information for designing specific activities.

SKiM prioritizes supporting the sharing/dissemination of knowledge, focusing on strengthening capacity and transferring agricultural and rural solutions already considered "best practices" by farmers. It also produces strategic KM products that can contribute to the innovation and impact objectives of the countries it operates. This study is one of such strategic KM products and uses a state of the art innovation and scaling methodologies in AR4D, Scaling Readiness.

Scaling Readiness is a decision support system designed to support international research for development projects and programs implemented by CGIAR in designing, developing, disseminating, and improving the use

of innovations at scale<sup>[3]</sup>. Scaling Readiness is distinguished from other approaches in innovation and scaling with its three pillars, i.e. i) using evidence on the assessment rather than expert opinion, ii) iii) dealing with impact ambitions through an innovation lens, and iii) being empowered by the Technology Readiness tradition established by NASA and used by among others EU Research and Innovation Programs.

Since Scaling Readiness has multiple innovative concepts and indicators that can be new to the reader, they are explained in the Scaling Readiness Lexicon in the start section of this study. More general information about Scaling Readiness can be accessed via [www.scalingreadiness.org](http://www.scalingreadiness.org). For the science dimensions of Scaling Readiness, a recent research paper<sup>[1]</sup> and implementation of the Scaling Readiness Guide<sup>[2]</sup> can be helpful. A recent case study<sup>[3]</sup> can give more information about the scope of Scaling Readiness assessments. To have more information about Scaling Readiness and the cases it has been implemented, please contact [murat.sartas@gmail.com](mailto:murat.sartas@gmail.com)



# SCALING READINESS LEXICON

**Evidence-based measurement:** Measures in Scaling Readiness are calculated using evidence. Specific claims of Readiness and Use measures are assessed through a hierarchy of sources of verification. High-quality science articles and other peer-reviewed documents are the first sources. In their absence, technical documents or other publicly scrutinized documents are used to back up specific evidence claims. Where there is any lack of any documents, multiple experts' opinions with sufficient competencies are triangulated to identify the measures.



**Innovation Component:** Knowledge, technology, a concept, practice, etc., that constitutes a part of innovations. Innovations have many components. Some of them are novel and play critical roles in the functioning and use of the innovation in the contexts the intervention operates for achieving specific intervention goals. They can be stand-alone innovations for other contexts and goals, but for the particular goals and contexts, an intervention operates, they work as a part of a larger innovation. In Scaling Readiness, these novel components of innovations are identified, characterized, and diagnosed. Research for development interventions can control or significantly influence the design, development, and delivery of innovation components.



**Innovation:** A novel product, service, arrangement, or purposeful combination with economic, environmental, health, industrial, etc., benefits. Innovations are different from inventions since innovations have explicit implementations. A product, service, arrangement, or combinations need to have a clear use objective to be considered innovation. Innovations can be technical or social. They can be tangible and intangible. In Scaling Readiness, innovations are characterized, diagnosed, and strategized. Research for development interventions can control or strongly influence innovations' design, development, and delivery and catalyze or support their use at scale.





**Innovation Package:** The combination of the innovations an intervention aims to design, develop, deliver with other innovations necessary to use them at scale. Innovation packages usually consist of technologies and other products, services, organizational and institutional arrangements, and systems required to improve awareness of accessibility, affordability, and other characteristics of an innovation that influence the functioning and use at scale. Innovation Package is the fundamental unit of analysis for scaling innovations in Scaling Readiness. Research for development interventions can influence the design and delivery of innovation packages, but they can not control it. Many innovations in the innovation packages are beyond the control and influence zone of interventions; therefore, partnerships are vital in improving the overall Scaling Readiness of Innovation Packages.



**Innovation Readiness Level:** It indicates how mature or practical an innovation is to achieve its use objectives. It can be considered as a systematic answer to the question “how good an innovation functions.” It can be between 0, which indicates that the innovation is just an idea in the mind of its potential designers and developers, and 9, suggesting that the innovation is a proven innovation with clear evidence of its value measured in terms of livelihood impact profit, etc. Research and development projects increase the Innovation Readiness Levels by improving the design of the innovations, developing and validating the improved designs in uncontrolled and controlled conditions



**Innovation Use Level:** It is a number indicating the level of the use of innovations at scale. It can be considered as a combined systematic answer to questions of “who uses an innovation and in which order of magnitude.” It can be between 0, indicating that the innovation is not being used in the context an intervention aims to increase the use of the innovation, and 9, which suggests that the innovation is being commonly used among the users who are not involved in any innovation design, development or dissemination processes. Research and development projects increase existing innovation use levels by disseminating the innovations and expanding the use of innovations by other innovation professionals who are not involved in the same projects and users who are not involved in any innovation processes.



Innovation Use Level can be considered an advanced measure for the adoption of innovations. It combines the adoption with the support provided by the projects. It includes a diversity of other innovation users to be a more valid estimate of the use potential of an innovation at scale.

In conventional impact assessment, adoption is measured by the number of people, households or organizations using an innovation regardless of their involvement in the activities of the project supporting the innovation. Most of the international development projects provide innovation free of charge or provide significant financial and non-financial incentives. Therefore, the use of the innovation, or the adoption, by the stakeholders supported by the projects are not a valid indicator for the potential use at scale of an innovation. There is a high chance that once the provision of the innovation or the strong incentives is stopped, the number of users of the innovation will decrease dramatically. In addition, several stakeholders who use the innovation are not sufficiently considered in conventional impact studies. In the early maturity phases of an innovation, there is a significant number of researchers, designers, developers, use supporters such as trainers, extension officers that use the innovation. As the number of these people get higher, the likelihood of the use at scale gets higher in the middle and long term, even if the number of the final users are the same in the short term.

**Intervention:** A coherent set of planned activities for achieving specific goals in a defined period within a particular space. An intervention is a general name of a project. Although most interventions are projects, there are other types of interventions such as programs, a specific combination of projects for achieving higher-level objectives, and initiatives that refer to a set of planned activities, usually without explicit specification of goals and period. Scaling Readiness can be used for multiple types of interventions, e.g., projects, programs, policy interventions.



**Scaling Readiness Level:** A single number combining the Readiness and Use level of all the innovations in an Innovation Package. It can be considered as a single answer to the question of “*what is the likelihood that an innovation package will achieve impact at scale.*” There are different ways of calculating the Scaling Readiness Levels based on the management system’s preferences. It can be an average level, a minimal level, or a weighted average level. In this study, two Scaling Readiness Levels are documented; the Average Scaling Readiness Level and Scaling Readiness Score. The Average Scaling Readiness Level is the multiplication of the averages of the individual Innovation Readiness and Use levels of components or innovations. Scaling Readiness Score is the multiplication of the Readiness and Use levels of the minimum level component or the innovation in the package. Scaling Readiness Score is a more strict version focusing on the minimum. It aims to help the designers of the interventions prioritize the bottleneck components or innovations that hinder the high impact at scale.



**Bottleneck Component or Innovation:** A subset of components of an innovation or innovations in the innovation package perform worse and are used by fewer users than the other components or innovations. In Scaling Readiness, the bottleneck components of an innovation or the bottleneck innovations in an innovation package are used to prioritize the activities of research for development intervention to achieve maximum impact at scale with minimum cost and resource use. Bottleneck components and innovations are not universal and depend on the specific time, space, and goals. Identifying Scaling Readiness Levels and the Scaling Readiness Score present the set of bottlenecks.



**Characterization:** Characterization is the first step of the Scaling Readiness Cycle. It includes the activities to document and classify three critical units, i.e., interventions, innovations, and stakeholders. One of these three critical units, innovations and their components, is characterized in this study by using a customized version of Scaling Readiness step 1.



**Diagnosis:** Diagnosis is the second step of the Scaling Readiness Cycle.



It includes assessments of the characteristics of the interventions, innovations, and stakeholders generated in the first step and the implications of these characteristics in achieving impact at scale. Diagnosis of the innovations and Innovation Package are made in this study using a customized version of Scaling Readiness step 2.

**Strategizing:** Strategizing is the third step of the Scaling Readiness



Cycle. It includes identifying tailor-made fit-for-purpose strategies for addressing the diagnosis step and improving the impact at scale performance using a set of hierarchical strategic options. Strategizing is done partially in this study by using a customized version of Scaling Readiness step 3.

**User-Based Reporting:** Scaling Readiness informs international impact



investors, managers of projects, programs, and policies working on innovative solutions to livelihood problems, designers, developers of innovations, monitoring, evaluation, learning and impact assessment professionals who are involved in projects, programs and policies including innovative solutions and researchers studying innovations and their impact. To tailor the content to the needs of these users, Scaling Readiness books and reports are organized into four major parts below:

## EXECUTIVE SUMMARY

All users

## SCALING GUIDELINES

- Impact Investors
- Project, Program and Policy Managers
- Designers and Developers of Innovations

## SCALING READINESS ASSESSMENT

- Project, Program and Policy Managers interested in details
- Designers and Developers of Innovations

## SCALING READINESS EVIDENCE REVIEW

- Designers and Developers of Innovations
- Monitoring, Evaluation, Learning and Impact Assessment professionals
- Researchers



# CONTENTS

<b>ABBREVIATIONS AND ACRONYMS</b> .....	v
<b>SCALING READINESS LEXICON</b> .....	viii
<b>CONTENTS</b> .....	xvi
<b>EXECUTIVE SUMMARY</b> .....	16
<b>PART A: SCALING GUIDELINES FOR IMPROVING THE CONSERVATION AGRICULTURE SYSTEM AT SCALE IN MOLDOVA</b> .....	20
<b>WHAT ARE THE SCALING GUIDELINES?</b> .....	21
<b>WHAT IS MEANT BY THE CAS IN MOLDOVA?</b> .....	22
<b>WHAT SHOULD THE INTERVENTIONS NEED TO PRIORITIZE TO IMPROVE THE PERFORMANCE OF THE CAS IN MOLDOVA?</b> .....	23
Conducting Applied Research On Implementing Farming Systems Principles In The CAS .....	23
Co-designing An Application Framework For Integration Of The High Yielding Varieties Or New High-Value Added Crop Alternatives .....	24
<b>WHICH COMPLEMENTARY INNOVATIONS DO THE INTERVENTIONS NEED TO PRIORITIZE FOR IMPROVING FARMING RESILIENCE AT SCALE IN MOLDOVA?</b> .....	25
Producing A Youtube Champion Story About The Benefits Of The CAS .....	26
Producing And Distributing A Brief Fact Sheet About The Economic Benefits Of CAS .....	26
Integrating Several Tools into A Digital Farmer/Enterprise Suitability Assessment Tool .....	27
Generating Evidence And Insights About The Contribution Of The Farmer Field Schools To The CAS By Supporting Studies Commissioned By The Local Capacity Building Governance Actors And Farmers/Enterprises .....	28
<b>WHICH STAKEHOLDERS TO WORK WITH NOW?</b> .....	29
<b>PART B: SCALING READINESS ASSESSMENT OF THE CONSERVATION AGRICULTURE SYSTEM IN MOLDOVA</b> .....	30
<b>INNOVATION PROFILE OF THE CAS</b> .....	32
Innovation Profile Sheet .....	33
Innovation Profile Diagnosis .....	34
<i>Users</i> .....	34
<i>Major Contributions Of The CAS In Moldova</i> .....	35
<i>Advantages And Disadvantages Of CAS In Moldova</i> .....	35
<i>Novel Components Of The CAS In Moldova</i> .....	36
Readiness And Use Of The CAS .....	38
Scaling Readiness Of CAS .....	40
<b>INNOVATION PACKAGE PROFILE FOR THE CAS</b> .....	41
Diagnosis Of The Innovation Package .....	44
<i>Awareness About The CAS At Scale</i> .....	44
<i>Being Convinced About The Benefits Of The CAS At Scale</i> .....	45
<i>Affordability Of The CAS</i> .....	45
<i>Capacity Of The Users To Benefit From The CAS At Scale</i> .....	46
<i>Effectiveness Of The CAS At Scale</i> .....	47
<i>Efficiency Of The CAS At Scale</i> .....	48
Scaling Readiness Of The Innovation Package .....	50

<b>PART C: SCALING READINESS EVIDENCE REVIEW FOR CONSERVATION AGRICULTURE SYSTEM IN MOLDOVA</b>	<b>52</b>
<b>SCALING READINESS ASSESSMENT OF THE CAS TO IMPROVE FARMING RESILIENCE IN MOLDOVA MARCH 2021 ONWARDS</b>	<b>54</b>
Minimum Or No-tillage Farming	57
Mulching	57
Crop Rotation	57
Use Of Perennial Legumes	58
Long-term Vision	58
Farming Systems Principles	58
High-value-added Crops Or Varieties	59
Labour-saving Technologies	59
<b>SCALING READINESS ASSESSMENT OF THE CAS INNOVATION PACKAGE TO IMPROVE FARMING RESILIENCE IN MOLDOVA MARCH 2021 ONWARDS</b>	<b>60</b>
Short Benefits Stories From Conservation Agriculture Champions To Improve Awareness	63
Factsheet Of Economic Benefits To Convince The Farmers/Enterprises	63
Digital Farmer/Enterprise Suitability Assessment Tool To Increase The Efficiency	63
Applied Agricultural Tool And Equipment Use And Maintenance Course To Increase The Capacity Of Farmers/Enterprises	64
Farmer Field Schools To Increase The Capacity Of Farmers/Enterprises	64
Local Integrated Research And Knowledge Management System To Increase The Effectiveness	66
Financial Incentives For Agricultural Tools And Equipment To Increase The Affordability	66
Translation Incentives For Applied Conservation Agriculture Publications To Increase The Capacity Of Farmers/Enterprises	66
Agricultural Tool And Equipment Repair Investment Support Program To Increase The Efficiency	67
<b>ANNEX-1: INNOVATION READINESS LEVELS</b>	<b>68</b>
<b>ANNEX-2: INNOVATION USE LEVELS</b>	<b>69</b>
<b>ANNEX-3: EVIDENCE SOURCES REFERRED IN THE EVIDENCE REVIEW</b>	<b>70</b>
<b>ANNEX-4: OTHER SOURCES INFORMING THE EVIDENCE REVIEW</b>	<b>80</b>
<b>ANNEX-5: ADDITIONAL WEB RESOURCES INFORMING THE ASSESSMENT</b>	<b>88</b>

# EXECUTIVE SUMMARY

The world is experiencing an exceptional transition period in multiple dimensions. Health, climate, economic and political shocks are getting more common and more interwoven. Current approaches and systems based on single sectors and regular global supply chains are being disrupted more frequently. To keep agriculture viable for most farmers and enterprises, significant changes in how agricultural systems operate are necessary. The changes should include technological advances, new governance mechanisms, and a difference in the overall approach to agriculture. The shocks and the changes to address forces farmers and enterprises to become more resilient.

Conservation agriculture is one of the promising approaches that can improve the resilience of the farming sectors, farmers, enterprises involved in farming and rural livelihoods. Research and International Fund for Agricultural Development (IFAD) experience across the world showed that conservation agriculture could also have multiple environmental and social benefits. Therefore, national and international governance actors in Moldova have been establishing and supporting conservation agriculture systems in the last decades.

IFAD has been one of the critical pillars of the support provided to conservation agriculture efforts in Moldova and beyond. Conservation agriculture has been championed in IFAD Near East, North Africa, Europe, and Central Asia regional strategies and plans for more than a decade. IFAD also funded multiple initiatives to enhance the CAS as a part of the Country Strategic Opportunities Programme (COSOP) of the Republic of Moldova for 2019-2024. To capitalize on the gains from the conservation agriculture and to strengthen the impact of IFAD and other investments in the conservation agriculture sector in Moldova specified in the COSOP, the CAS was selected as the focus innovation for a Scaling Readiness study by the IFAD, CGIAR teams in consultation with the key stakeholders in agriculture and rural sectors in Moldova.

This study is prepared to complement IFAD Near East, North Africa, Europe, and Central Asia directorate efforts in Moldova. It utilizes state of the art



Scaling Readiness Approach<sup>1</sup> to assess the current CAS scientifically and provide recommendations for further improvements in the CAS and its contribution to resilient farming at scale. The information presented in the study is synthesized from a set of global cases. Selected experts partially guided the evidence collection among the pool of key experts who have significant knowledge and experience in designing and implementing the CASs components.

The study consists of three parts that address the needs of different users. The first part, **Scaling guidelines**, presents the synthesis of the findings and provides actionable recommendations to managers of CAS projects, programs, and policies and professionals of specific innovations and components in the CAS in Moldova. The second part, **Scaling Readiness Assessment**, provides a detailed description and the diagnosis of the CAS using an innovation and science perspective. It also presents the Scaling Readiness graph of the CAS and the Innovation Package that aims to improve the Use of the CAS at scale in Moldova. The third part, **Scaling Readiness Evidence Review**, articulates the findings of this study by discussing the evidence sources and gives an extensive list of the resources analyzed and used in writing this study. It also provides further insights in using the Scaling Readiness Approach in assessing the impact potential of innovations at scale.

The study shows that the CAS is a system type of innovation consisting of eight novel critical components for its successful implementation. As a system, it includes not only agricultural practices but also principles, approaches and technological products.



**Minimum or no-tillage farming**



**Long term vision**



**Mulching**



**Farming systems principles**



**Crop rotation**



**High-value-added crops or varieties**



**Use of perennial legumes**



**Labor-saving technologies**

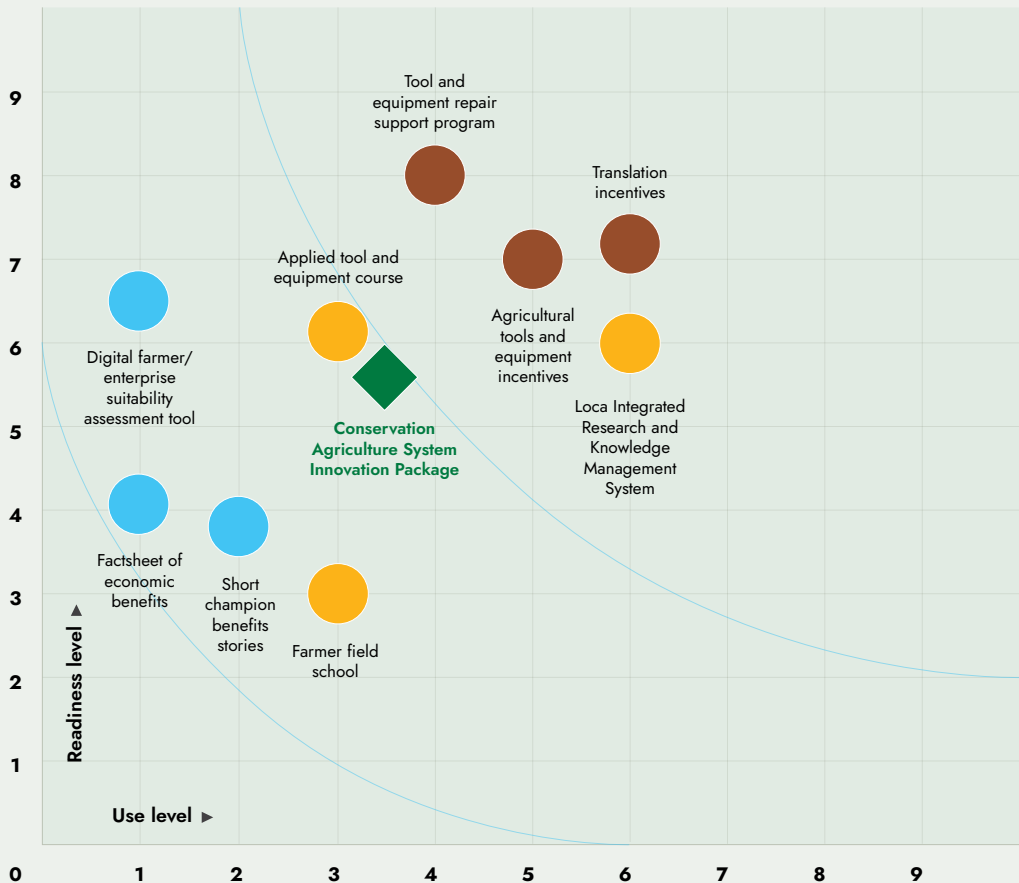
<sup>1</sup> [www.scalingreadiness.org](http://www.scalingreadiness.org)

Improving the maturity of the CAS requires nine other complementary innovations to impact the resilience of farming systems in Moldova at scale. The complementary innovations' functional performance (measured by the Readiness Levels presented in the Y-axis in Figure 1) and differentiated Use levels (measured by the Use Levels presented in the X-axis in Figure 1) differ significantly. The study shows that the policy frameworks supporting the system (Red Colored Innovations in Figure A) are relatively more advanced. At the same time, some of the complementary products (Blue Colored Innovations in Figure B) are somewhat less advanced.

### CONSERVATION AGRICULTURE SYSTEM INNOVATION PACKAGE IN MOLDOVA FOR MORE RESILIENT FARMING, MARCH 2021

- Product
- Policy
- Service
- ◆ All Package

The Conservation Agriculture System Innovation Package has an Average Readiness Level of **5.67** and an Average Use Level of **3.44**, corresponding to an Average Scaling Readiness Level of **17.82** and a Scaling Readiness Score of **4**.



Based on the findings, the Scaling Readiness assessment team recommends that interventions aiming to improve the CAS prioritize the following research, innovation and utilization support tasks.



conducting applied research on implementing farming systems principles in the CAS, which would create knowledge on how the Conservation Agricultural System can better function as an integrated system



co-designing an application framework for integration of the high yielding varieties or new high-value-added crop alternatives into the CAS, which would increase the profitability of the CAS significantly and lead to increase the applicability of the CAS for more farmer and small enterprise groups in Moldova



producing youtube champion farmer and small enterprise stories about the benefits of the CAS, which would increase the awareness about the CAS and convince many farmers and small enterprises to use it



producing and distributing a brief fact sheet about the economic benefits of CAS, which would significantly contribute to convincing commercial oriented farmers to use the CAS



integrating several tools into a digital farmer/enterprise suitability assessment tool and support their use by national and local government, which would help to identify the farmers and small enterprises that have the most considerable potential to benefit from the CAS and increase the efficiency and effectiveness of the interventions supporting the CAS



generating evidence and insights about the contribution of the farmer field schools to the CAS by supporting studies commissioned by the local capacity building governance actors and farmers/enterprises and update the curriculum and practices based on the insights

The study also recommends mobilizing a diverse set of competencies cutting across multiple disciplines such as innovation behaviours, participatory research, seed and plant material regulation systems, agricultural finance, story design, and data management in addition to CAS subjects.

# PART

# A

**SCALING GUIDELINES  
FOR IMPROVING  
THE CONSERVATION  
AGRICULTURE SYSTEM AT  
SCALE IN MOLDOVA**

## WHAT ARE THE SCALING GUIDELINES?

The scaling guidelines bridge the results of the Scaling Readiness diagnosis and assessments with the four major management questions vital for an intervention aiming to enhance the impact of the CAS at scale.

Specifically, they provide answers to



what is meant by the CAS in Moldova, or what do the interventions aim to scale,



what should the CAS interventions need to prioritize to improve the performance of the system



which complementary innovations do the interventions need to prioritize for improving farming resilience at scale in Moldova and



which competencies and capabilities should the intervention managers look for in identifying and collaborating within their organizations and from other stakeholders operating in the agriculture for development landscape in Moldova.

The scaling guidelines are at the strategic level. They aim to be a first reference document for designing or adapting strategies and can be followed by a detailed strategic plan that can be integrated into the design and planning of the interventions to contribute to the CAS in Moldova.

The guidelines are designed to be a stand-alone document for



managers of CAS projects, programs, and policies,



designers, developers, and managers of specific innovations and components in the CASs











International impact investors on CASs

The responses provided to the management questions in The Scaling Guidelines are identified through a rigorous review of the evidence sources using the Scaling Readiness Measures. They are not based on the opinions of the experts. The Scaling Readiness measures and the evidence sources are not articulated in this part. More information about the measures can be accessed from the Scaling Readiness Assessment (Part B) and Evidence Review (Part C). Detailed explanations about the measures and the evidence sources used to do the assessment can be accessed from the Scaling Readiness Evidence Reviews.

## WHAT IS MEANT BY THE CAS IN MOLDOVA?

The CAS is a combination of many different products, services, organizational and institutional arrangements. Among these many components, some of them are novel in Moldova. These novel components differentiate the CAS from other conventional agricultural systems in Moldova and make the CAS an innovation. In other words, the CAS is a system type of innovation since it introduces novel components in an integrated way in Moldova. The CAS components novel for Moldova might not be novel for other countries, and the system might not be considered an innovation in other countries.

Specifically, the CAS in Moldova has the following eight novel components:

- |   |                                      |   |  |
|---|--------------------------------------|---|--|
|  | <b>Minimum or no-tillage farming</b> |  | <b>Long term vision</b>                    |
|  | <b>Mulching</b>                      |  | <b>Farming systems principles</b>          |
|  | <b>Crop rotation</b>                 |  | <b>High-value-added crops or varieties</b> |
|  | <b>Use of perennial legumes</b>      |  | <b>Labor-saving technologies</b>           |

In brief, when an intervention mentions improving the Use of the CAS at scale, it refers to increasing the Use of some of no-tillage farming or mulching and the Use of all the components listed above in a coordinated way.

## WHAT SHOULD THE INTERVENTIONS NEED TO PRIORITIZE TO IMPROVE THE PERFORMANCE OF THE CAS IN MOLDOVA?

The components of the CAS have different Readiness and Use scores to achieve farmer resilience. The Scaling Readiness Assessment of the CAS showed that while some novel components are at the design stage, others are already tested and validated in Moldova. While some of the components are not known by the farmers/enterprises, others are implemented by farmers/enterprises without support from the government, civil society organizations, and international organizations.

The Scaling Readiness Assessment showed that implementing the farming system principles and high-value-added crops or varieties are the components with the lowest maturity and use among all the novel components. In other words, they are the bottlenecks for achieving impact from using the system in Moldova to increase the resilience of farming.



### **Conducting Applied Research On Implementing Farming Systems Principles In The CAS**

Specifically, farming systems principles have a Readiness score of 4, which corresponds to an unproven application model. Implementing the farming system principles as a part of the CAS was designed as a general concept. It was validated against the basic agro-biological and social principles, and an application model for operationalizing it in other countries was proposed. However, the application model was not validated systematically, neither in Moldova nor in other countries. In other words, there is no evidence about how the implementation of the farming system principles can contribute to the high performance of the CAS for achieving a more resilient farming system. To address this bottleneck or gap, the Scaling Readiness team recommends conducting applied research with an experimental design in which the CAS is implemented with and without implementing farming system principles. Such research will lead to findings and insights for tools, practices, and mechanisms for better integrating the farming system principles into the CAS and improving the system's maturity as a whole. Since such research is not done systematically outside of Moldova, there can be interest from the international conservation agriculture research

community. Therefore, designing/participating in an international research project with a work package on implementing farming system principles in the CAS in Moldova can be a good option for Moldovan researchers and knowledge organizations.



### **Co-designing An Application Framework For Integration Of The High Yielding Varieties Or New High-Value Added Crop Alternatives**

The second bottleneck component for increasing the impact of the CAS for improving farmer resilience in Moldova is the identification of high-value-added crops or varieties and their use in the CAS. High-value-added crops or varieties have a Readiness score of 5, which corresponds to the proven application model. Similar to the farming system principles, the use of high-value-added crops and varieties was conceptualized as one of the potential improvement sources in the CAS. The concept was validated using agronomical research, and later multiple application models with different crop/variety choices have been designed. Some of them were validated outside of Moldova. However, how the high-yielding varieties or new high-value-added crop alternatives be integrated into the CAS in Moldova was not addressed systematically. The Scaling Readiness team recommends co-designing an application framework to blend the high-yielding varieties or new high-value-added crop alternatives to target this bottleneck. Designing the framework together with the critical farmer/enterprise representatives and the governance actors and going beyond the researchers is a vital success factor that needs to be considered. It is also essential to document the design process since the same process can be used by the local stakeholders of the CAS for different crops and varieties, enabling more performance gains for the CAS. The involvement of the other stakeholders will contribute to better design and awareness and buy-in of the farmers/enterprises, helping to increase their use at scale.



## WHICH COMPLEMENTARY INNOVATIONS DO THE INTERVENTIONS NEED TO PRIORITIZE FOR IMPROVING FARMING RESILIENCE AT SCALE IN MOLDOVA?

Achieving a high maturity CAS alone will not be sufficient to impact farming resilience in Moldova positively. To ensure good use of the system at scale, Improving the other innovations that complement the CAS is crucial, i.e., complementary innovations.

The Scaling Readiness Assessment identified the following nine complementary innovations and assessed the Readiness and Use scores for each of them.

Short benefits stories from conservation agriculture champions

Applied agricultural tool and equipment use and maintenance course

Factsheet of economic benefits

Local integrated research and knowledge management system

Digital farmer/enterprise suitability assessment tool

Financial incentives for agricultural tools and equipment

Farmer field schools

Translation incentives for applied conservation agriculture publications

Investment support program for agricultural tool and equipment repair

The innovations had different Readiness and Use levels. The first four had relatively low Readiness and Use scores and are the bottlenecks in the CAS innovation package.



## Producing A Youtube Champion Story About The Benefits Of The CAS

Short benefit stories from conservation agriculture champions are youtube videos showcasing the experience of the farmer/enterprise champions who implemented CASs. In the stories, multiple champions talk about their journeys using the principles of narrative design. Short benefit stories are commonly used in marketing to introduce a new system to customers and make them interested in the innovations. Although they are not very common in agriculture, there are multiple examples for a range of subjects. Some short benefits stories related to the CAS have been conceptualized in other countries. Several have been tested for the CAS-related issues outside of Moldova. However, the Scaling Readiness Assessment could not identify any evidence on proposals or final versions of a champion story that presents the benefits of the CAS in Moldova, which implies a Readiness level of 4. To increase the awareness of the farmers/enterprises on the benefits of the CAS, the Scaling Readiness team recommends making a short benefit stories video. In Moldova, existing work on farmer champions is in the form of interviews. A few projects published interviews presenting some farmers/enterprises implementing the CAS. This translated into Use level 2. Showcasing the youtube video in other social media outlets and advertisements on Youtube can significantly increase awareness about the CAS.





## **Producing And Distributing A Brief Fact Sheet About The Economic Benefits Of CAS**

The factsheet about the economic benefits of the CAS is a single pager or maximum two-page document presenting the economic case of implementing a CAS visually. It has the Readiness score of 4. In other words, the concept of using short descriptive documents to increase the awareness of farmers/enterprises has been developed and validated outside of Moldova. There were several short descriptive documents about the CAS in Moldova. However, no draft or finalized fact sheet compellingly presented the economic benefit. To convince the farmers/enterprises about the benefits of implementing the CAS, the Scaling Readiness Assessment team proposes to prepare the factsheet. The Use level of the factsheet is 1, indicating that there is no clear evidence of the use of a similar factsheet. To increase the Use of the factsheet, it is necessary to distribute them on a large scale. It could be ideal to distribute the factsheet to farmers/enterprises in their farms or in small gatherings by people informed by the factsheet content and who can easily communicate with the farming community.



## **Integrating Several Tools into A Digital Farmer/Enterprise Suitability Assessment Tool**

Digital farmer/enterprise suitability assessment tool is a classification engine that uses agro-ecological conditions of the farm, socioeconomic characteristics, and farming history of the farmer/enterprise to assess if and how much a farmer/enterprise can economically benefit from using the CAS. It also shows when is the break-even point for implementing the Conservation Agriculture System. Components of such a tool have been designed and tested by different interventions working in Moldova. However, a single tool with specific interfaces such as web portals or smartphone apps has not been experimentally validated yet, which corresponds to a Readiness score of 6. The tool can be integrated from existing other tools in the Moldovan agricultural sector and has considerable potential to increase the efficiency of the investments in the CAS. The Use level of the tool is 1. Although there is long-term use of some of the components of the tools, such as in organic agriculture databases, the use has been restricted to a few experts working for an intervention. To increase the Use of the tool, after completing its design, it is necessary to strategize the handover of the tools initially

by local experts in the agricultural governance system in Moldova. Later they should be simple enough for the farmers/enterprises to assess the benefits of the CAS for themselves.



### **Generating Evidence And Insights About The Contribution Of The Farmer Field Schools To The CAS By Supporting Studies Commissioned By The Local Capacity Building Governance Actors And Farmers/Enterprises**

Farmer field schools are critical capacity development assets for farmers/enterprises interested in implementing the CAS in Moldova. They have been conceptually designed and validated to contribute to implementing the CASs outside Moldova. However, there has been no systematic applied evidence showing the contributions of using farmer field schools as an instrument to improve the Conservation Agriculture Systems in Moldova or countries in a similar context. This corresponds to a Readiness score of 3. Generating such evidence and using the insights from studies has a significant potential to improve the capacity development activities about the CAS in Moldova and beyond. Many farmers/enterprises participating in the interventions implemented by local and international investors have used the farmer field schools. However, the Scaling Readiness Assessment team could not find any specific evidence for farmers/enterprises, designers, developers of agricultural curriculums, and training practices that are not supported by the interventions. This corresponds to a Use level of 3. Incentivizing the local capacity building governance actors, farmers/enterprises to recruit experts and specialists who design and develop farmer field school relevant tools and practices can increase the use of the farmer field schools. It can also lead to multiple learnings and insights that benefit the agricultural sector in Moldova as a whole.

## WHICH STAKEHOLDERS TO WORK WITH NOW?

Advancing the priority work on the components of the CAS and complementary innovations requires a specific set of competencies. Interventions targeting the priority work need to access these competencies by including the people in the intervention teams or establishing collaboration mechanisms. These competencies are from different disciplines such as science, research, and development, agronomy, communication, and ICT. Specifically, the Scaling Readiness team recommends having the following competences





**PART**

**B**

**SCALING READINESS  
ASSESSMENT OF  
THE CONSERVATION  
AGRICULTURE SYSTEM IN  
MOLDOVA**

The Scaling Readiness Assessment provides detailed information about the CAS in Moldova and complementary innovations critical for the impact at scale potential of it for achieving more resilient farming.

Specifically, it presents:

the essential characteristics of the CAS in terms of its performance at scale



the diagnosis of these crucial characteristics from an innovation and scaling perspective



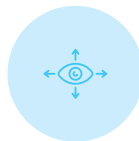
readiness and use scores of the novel components of the CAS



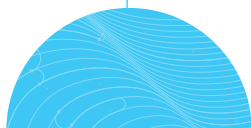
innovations that are necessary to achieve a positive impact from using the CAS at scale



the diagnosis of the innovations from an innovation and scaling perspective



readiness and use scores of the innovations in the CAS Innovation Package



The Scaling Readiness Assessment is at the action level. It aims to provide a deeper understanding of innovation-related information relevant to achieving impact at scale by implementing the CAS.

The Assessment is designed to be a stand-alone document for



managers of CAS projects, programs, and policies which are interested in developing a deeper understanding



designers, developers, and managers of specific innovations and components in the CASs

The procedures for identifying the Scaling Readiness measures and the evidence sources are not articulated in this part. More information about the measures can be accessed from the Scaling Readiness Evidence Review (Part C). The assessment also does not articulate the implications of the findings for designing and implementing Scaling projects, programs, and policies. A synthesis of the findings and recommendations are provided in the Scaling Readiness Guidelines (Part A)

## INNOVATION PROFILE OF THE CAS

Scaling Readiness Innovation Profile is a tool to describe the characteristics of an innovation aimed to be designed, developed, disseminated, or be used at scale <sup>[3]</sup>. It aims to create and contribute to improving the impact of the CAS at scale through i) presenting gaps in the design of the CAS, ii) developing a shared understanding between national actors, donors, developers, disseminators, and users about what conservation agriculture is and what it entails and iii) creating a brief communication product for presenting the innovation to various stakeholders. In this study, a customized version of the Innovation Profile is used to characterize “the CAS.” In this section, the Innovation Profile Sheet, an overall diagnosis of the results in the Innovation Profile Sheet, and innovation Readiness and Use assessment of the CAS is provided.



# Innovation Profile Sheet



## THE CONSERVATION AGRICULTURE SYSTEM

The Conservation Agriculture System is an integrated agricultural system for producing crops in a way that has the most negligible negative impact on the environment. It improves the fertility of the soil in multiple ways and increases the resilience of farmers to soil-related shocks such as erosion and flooding. There are several fundamental tenets of the system: minimum or no-tillage of soil, covering the soil surface with crop residues, and crop rotation.

### APPLIED BY



Progressive smallholder farmers

### SUPPORTED BY



International organizations



Foreign investors



Civil society organizations

### BENEFITS

Rural residents

Urban residents

### AIMS AT



Erosion control



Prevention of flooding



Climate change adaptation

### PROS

Decrease input costs

Improves soil health

Improve food quality for consumers

### CONS

Knowledge-intensive

Advisory support intensive

Requires no-till seeders

### CONTRIBUTES TO

#### SUSTAINABLE DEVELOPMENT GOALS

TARGET 2-4



TARGET 3-9



TARGET 12-4



TARGET 15-1



## NOVEL COMPONENTS OF THE CONSERVATION AGRICULTURE SYSTEM IN MOLDOVA



Minimum or no-tillage farming



Mulching



Crop Rotation



Use of perennial legumes



Long term vision



Farming systems approach



High value added crops or varieties



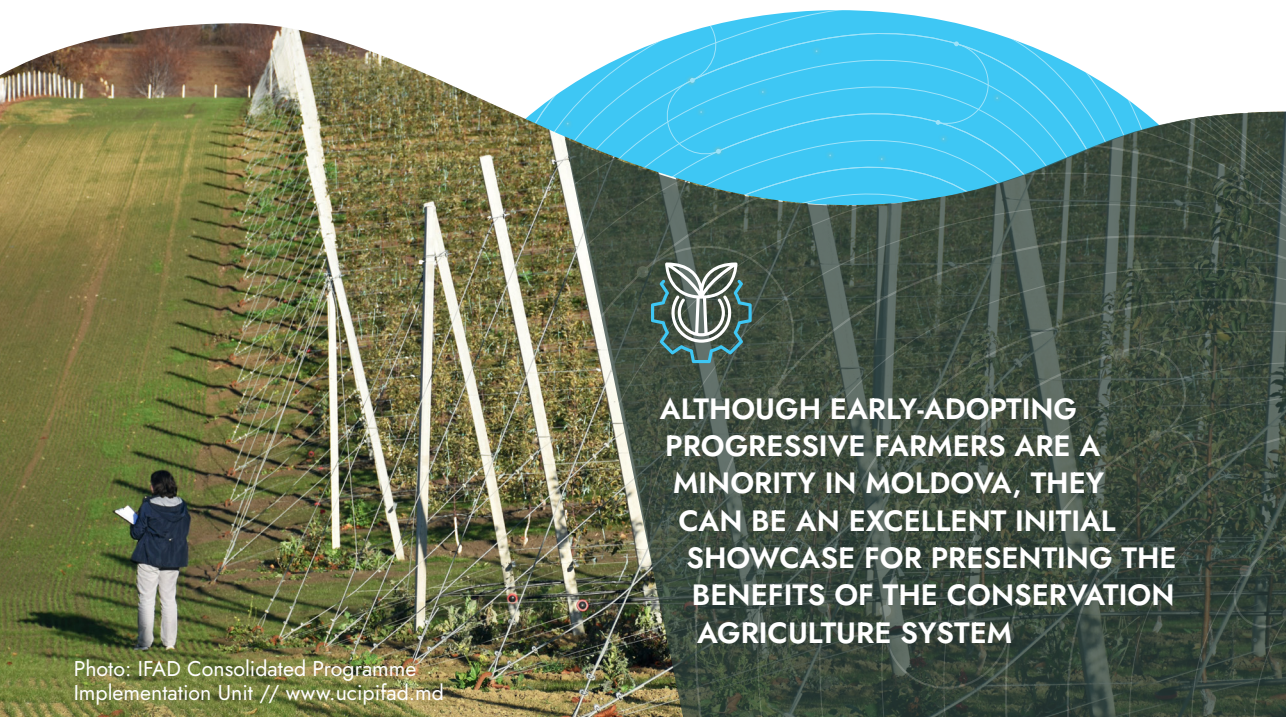
Labour-saving technologies

## Innovation Profile Diagnosis

This part provides information about the diagnosis of the assessment team on the components of the innovations presented in the Innovation Profile Sheet.

### Users

The CAS targets most farmers in Moldova but has been used chiefly by progressive farmers, who are open to using new tools and practices. Although early-adopting progressive farmers are a minority in Moldova, they can be an excellent initial showcase for presenting the benefits of the CAS. If the initial case of the progressive farmers is attractive for the remaining large group of farmers, it can be a pull factor for adopting the system. Support of international organizations, foreign investors such as Japan, and civil society organizations for increasing the use of innovative approaches in agriculture in Moldova is valuable for expanding the use of conservation agriculture. However, for large-scale adoption, it is vital to have a strategy for gradually increasing the role of local governance structures and the private sector while decreasing the role of international organizations. **Overall, the current user pattern of the CAS in Moldova is compatible with the localization of international approaches and does not necessitate a significant change.**



**ALTHOUGH EARLY-ADOPTING  
PROGRESSIVE FARMERS ARE A  
MINORITY IN MOLDOVA, THEY  
CAN BE AN EXCELLENT INITIAL  
SHOWCASE FOR PRESENTING THE  
BENEFITS OF THE CONSERVATION  
AGRICULTURE SYSTEM**

### Major Contributions Of The CAS In Moldova

Available information about the status of the Conservation Agriculture System showed that it had and can enhance erosion control, prevent flooding and contribute to the resilience of the Moldovan agricultural sector to climate change. Although these contributions are critically significant for the sustainability of Moldovan agriculture, it is shown in other countries with a long experience with conservation agriculture that they did not necessarily raise the interest of farmers and convinced them to adopt the CAS. **To increase the use of the CAS at scale, it is necessary to build on the early studies done in Moldova and explore which potential activities can convince the Moldovan farmers to adopt the system.**

### Advantages And Disadvantages Of CAS In Moldova

Compared to its conventional alternatives in Moldova, the CAS requires fewer inputs (fertilizers, herbicides in the long run, etc.). It requires less cash in the long run. Also, a reduction in the use of chemical inputs leads to higher quality agricultural produce. However, the CAS can be labour-intensive. Labour-intensive activities are an opportunity for an economy with a growing population. However, this advantage does not translate into a real one in Moldova due to the labour shortage and the low level of unemployment in Moldova.

On the contrary, coupled with the decline of the labour force in absolute numbers in Moldova and migration to cities, the labour will become less scarce, which will make the labour intensity a more considerable disadvantage. The CAS is also intense in terms of the farmer knowledge it requires and research and extension support. **To increase the use of the CAS at scale in Moldova, it is necessary to orient the CAS away from low value-added high volume cereals to high-value-added niche sectors. Another option is to increase accessibility and use of labor-saving technologies.**

## Novel Components Of The CAS In Moldova

To achieve a positive impact at scale, new interventions like conservation agriculture need to do business differently and introduce novel components to the agricultural sector in Moldova. Therefore, it is crucial to identify the novel components necessary to use the CAS at scale and understand their current status to develop appropriate strategies.

The research done by the assessment team identified **eight** novel components for the CAS. Four of the eight components are well-established agricultural practices in the Conservation Agriculture System in several high-income countries. However, they are new for most of the farmers in Moldova. These four are minimum or no-tillage farming, mulching, crop rotation, and the use of perennial legumes with the main crops. These four practices address the needs of soil fertility management and play critical roles in the performance of the CAS as an innovation in Moldova.

The assessment team identified the remaining four from the interviews with the key experts working on the CAS in Moldova and studying the experience of other countries around the globe which have similar conditions with Moldova. The components are long-term vision, utilization of farming systems approach, a set of high-value-added crops or crop varieties, and labor-saving technologies.

The interviews done for the assessment showed that the CAS in Moldova needs to have a **long-term vision for change**. In the current demographic, advisory service, and technological endowment conditions of the Moldovan Agricultural sector, in the short term, it is hardly possible to achieve adoption of the CAS at scale. Reaching favourable labour conditions, building necessary research and extension capabilities, and building machine parks sufficient to use the system at scale can be achieved only in the long term. Therefore, the CAS in Moldova needs to include a long-term vision as an integral part.

The current state of the art of science and knowledge about the CAS indicates that successful implementation of the CAS requires understanding the interactions between crops, soil biology, soil physics and chemistry, climate, and market conditions in specific contexts. In other words, it requires using a **farming systems approach** in organizing the agricultural activities rather than a standardized intensified farming value chain approach. To be able to achieve a high impact on the CAS at scale in Moldova, suitable farming systems in Moldova need to be identified, nurtured, and institutionalized.



Diagnosis of the advantages and disadvantages of the CAS in Moldovan conditions showed that a mainstream system that focuses on cereals and other low margin crops might not be viable in Moldova. Although the experience of using a conservation agriculture approach in high-value-added crops is scarce, there are examples of successes <sup>[4–6]</sup>. A similar effort for identifying **high-value-added options** such as very high-performing cereal varieties or new crops that would fit best to the local context in Moldova might catalyze the use of the CAS at scale.

Diagnosis also indicated that labour is a critical ingredient for the CAS, and it is scarce in Moldova. Therefore, achieving the use of the system in Moldova requires a variety of **labour-saving technologies** that will increase the efficiency of the work in different activities of agricultural production. These technologies include machinery with minimal soil disturbance and digital components that will capitalize the information for reducing the need for interaction.

## Readiness And Use Of The CAS

*The Scaling Readiness* of an innovation is the **first** metric used to assess the impact potential of the CAS in Moldova. It focuses on the components of the system and provides a holistic picture of Readiness and Use. Readiness is a measure of how good the components of an innovation perform to achieve its desired objective, while Use is a measure that presents the type of people using the system and their numbers. More information about the Readiness and Use measures can be found in Annexes 1 and 2.

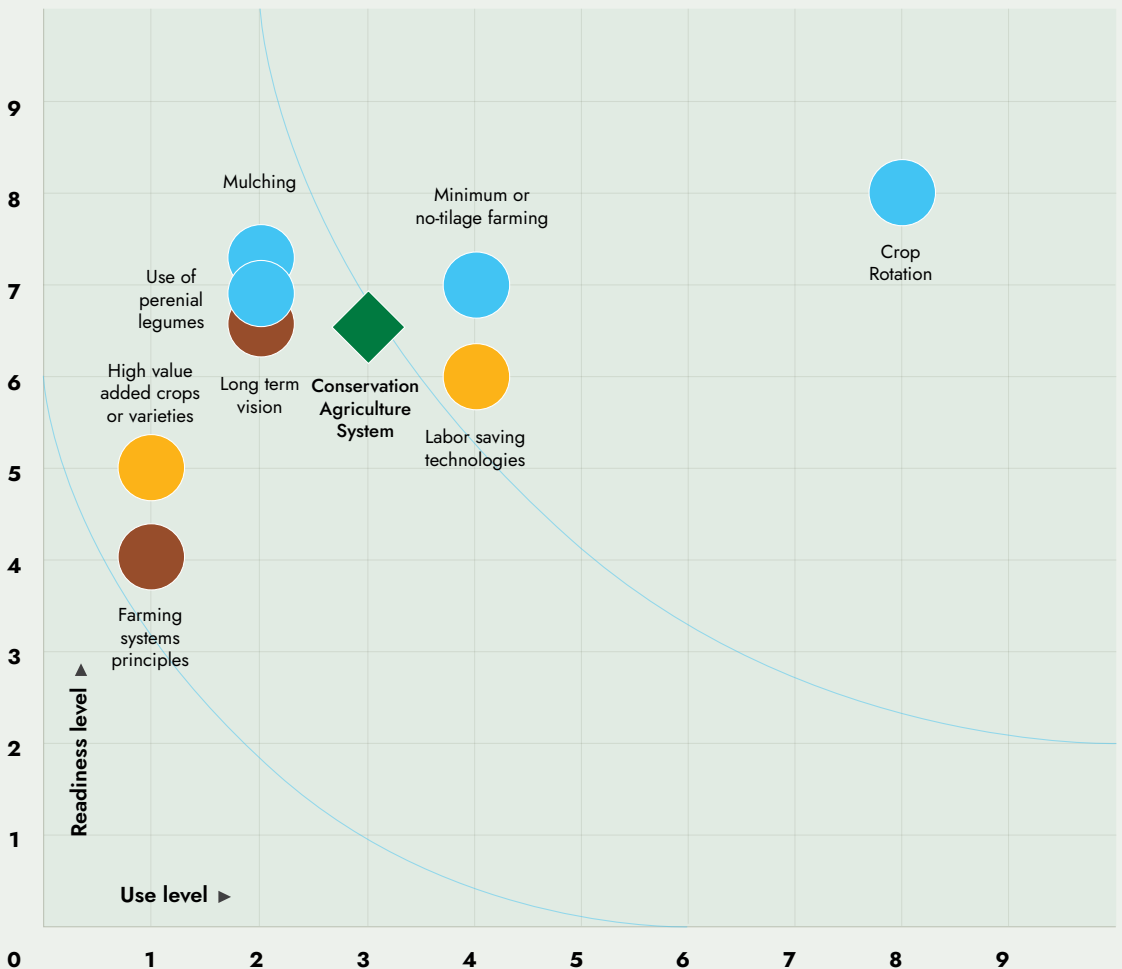
The Scaling Readiness Assessment team has prepared a Scaling Readiness Assessment for the CAS by using the published evidence provided in the evidence review in Part C. The assessment results are specific for Moldova in February and March 2021 for the contribution of the CAS to the resilience of the farmers in Moldova. It can differ for other countries, for different periods, and in achieving other goals.

**Figure B1:**  
Scaling Readiness Assessment of the Conservation Agriculture System  
For Moldova - 2021 March - More Resilient Farming

**CONSERVATION AGRICULTURE SYSTEM IN MOLDOVA FOR MORE RESILIENT FARMING, MARCH 2021**

- Practice
- Principle
- Product
- ◆ Innovation

The Conservation Agriculture System in Moldova has an Average Innovation Readiness Level of **6.4** and an Average Innovation Use Level of **2.9**, corresponding to an Average Scaling Readiness Level of **18.3** and a Scaling Readiness Score of **4**.



## Scaling Readiness Of CAS

Scaling Readiness Assessment of the components of the CAS in March 2021 in Moldova for achieving more resilient farming indicates that the components vary in terms of their Readiness (functional performance) and Use (actual use in Moldova). Overall, the evidence base about the four practices is broader, and practices have higher documented Readiness levels (Figure 1 - above). Crop rotation has a level of Readiness 8, meaning that it has been validated to work in Moldova to improve the resilience of farmers in a controlled environment. Minimal or no-tillage, mulching, and use of perennial legumes have Readiness scores of 7, meaning that the work on their contributions to the resilience of farmers has been continuing in Moldova.

The CAS's principle and product components have lower scores than the practices except for the long-term vision principle. Like most practices, the long-term vision principle has been argued to contribute to more resilient farming in Moldova, but how it contributes is not shown yet scientifically. The other principle, the farming systems principle for designing and implementing the CAS, has a readiness score of 4 for improving farming resilience in Moldova. Although there are some application models for operationalizing farming systems principles in conservation agriculture, there is no precise application of the principle that can be used in Moldova yet.

Two products in the CAS in Moldova have Readiness levels 6 (labour-saving technologies for implementing CAS) and 5 (high-value-added crops or varieties that can be used in the CAS). Application models for some mechanical equipment technologies, same high-value crops, and high yield cereal varieties have been designed in other countries, and some of these are provided in Moldova. However, there is no clear evidence on how they contribute to implementing the CAS in Moldova yet.

In terms of the Use, the components of the CAS in Moldova have higher variability. Crop rotation is implemented by a small ratio of farmers in



Moldova that the government or another development intervention has not supported. The assessment could not identify any clear evidence of the use of the other components beyond the secondary partner farmers, who were linked to the people who are supported by the interventions implemented by international organizations and civil society. There is documented evidence that minimum or no-tillage farming and labour-saving technologies are used in Moldova by the farmers who are not directly linked to the interventions.

The partner farmers of the interventions used mulching and perennial legumes. However, long-term vision, farming system principles, and the high-value crops and varieties for the CAS were not shown to be adopted by stakeholders beyond the intervention teams.

## INNOVATION PACKAGE PROFILE FOR THE CAS

Scaling Readiness Innovation Package Profile is a tool to describe other innovations necessary to use an innovation at scale. Innovations can not be used at scale without other innovations complimenting their use <sup>[1]</sup>. For instance, a machine can not achieve use at scale without complementary energy infrastructure, the best practices about using it, etc. Scaling Readiness Innovation Package Profile aims to improve the performance of an intervention through i) helping to identify other innovations systematically and ii) developing a shared understanding between the project managers, designers, developers, disseminators, and use partners about their complementary roles. In this study, an Innovation Package Profile identifies other innovations necessary to use “Conservation Agriculture” at scale. In this section, i) the Innovation Package Sheet, ii) an overall diagnosis of the configuration of the Innovation Package Sheet, and iii) innovation Readiness and Use assessments of the Innovation Package are provided.

# INNOVATION PACKAGE FOR THE CONSERVATION AGRICULTURE SYSTEM



## SHORT BENEFITS STORIES FROM CONSERVATION AGRICULTURE CHAMPIONS

Short (youtube) videos showing the support farmers can receive if they use conservation agriculture practices

- ✓ To increase awareness about direct short term benefits of using CAS



## FACTSHEET OF ECONOMIC BENEFITS

A digital/paper one-pager that is showing the conditions the conservation agriculture can be profitable and economic opportunities it offers

- ✓ To convince farmers to adopt the CAS



## FINANCIAL INCENTIVES FOR AGRICULTURAL TOOLS AND EQUIPMENT

Subsidy and tax break legislation and mechanism for purchasing and maintenance of agricultural tools and equipment

- ✓ To increase the affordability of equipment necessary to apply CAS



## APPLIED AGRICULTURAL TOOL AND EQUIPMENT USE AND MAINTENANCE COURSE

Practical training course on use, maintenance, and repairing of agricultural machinery and other tools

- ✓ To increase the capacity of farmers to use tools used in the CAS



### TRANSLATION INCENTIVES FOR APPLIED CONSERVATION AGRICULTURE PUBLICATIONS

Financial and nonfinancial incentives for translating the applied knowledge of CAS best practices around the world

- ✓ To increase the capacity of farmer trainers and service providers to farmers



### FARMER FIELD SCHOOLS

Whole year long available farmer support and demonstration facility

- ✓ To increase the capacity of farmers to use CAS



### LOCAL INTEGRATED RESEARCH AND KNOWLEDGE MANAGEMENT SYSTEM

A green paper (background study) for identifying research and science capabilities that can be mobilized in implementing the Conservation Agriculture System and recommendations for consolidating them

- ✓ To increase the effectiveness of generating, disseminating, and using local know-how on CAS



### DIGITAL FARMER/ENTERPRISE SUITABILITY ASSESSMENT TOOL

A digital tool for identifying which farmers can and cannot commercially benefit from the CAS

- ✓ To increase the efficiency of the CAS



### AGRICULTURAL TOOL AND EQUIPMENT REPAIR SUPPORT PROGRAM

A set of training and investment support program for agricultural tool and equipment repairing workshops

- ✓ To increase the efficiency of the CAS

## Diagnosis Of The Innovation Package

This part provides information about the diagnosis of the innovations presented in the innovation package sheet.

### Awareness About The CAS At Scale



The CAS is known by progressive farmers and enterprises eligible for interventions implemented by governments and international donors. Information portals such as [Agrobiznez.md](https://www.agrobiznez.md) provide up-to-date support on the CAS. However, there is no sufficient awareness among most farmers and small enterprises about the economic benefits and direct support they can get if they use the CAS. One innovation that can address the gap in awareness is “**Short benefits stories from conservation agriculture champions,**” in which farmers who got support for using the Conservation Agriculture System share their own experience and explain the support and economic benefit they received. Since youtube is one of the top websites visited by Moldovans, using youtube for hosting videos has an immense potential to increase the outreach of the benefit stories and their contribution to awareness.



## Being Convinced About The Benefits Of The CAS At Scale



The research done for this study showed that most stakeholders of the CAS were convinced that the system contributes to the resilience of farming through multiple channels. However, being convinced about more resilient farming is not sufficient to use the CAS alone. To achieve large-scale use, the economic benefits of the system need to be presented clearly in a concise manner. A potential innovation that can convince most farmers in Moldova is a **short fact sheet** showing the economic benefits and the requirements for benefiting economically.

## Affordability Of The CAS



A suit of labour-saving technologies, i.e., **agricultural tools and equipment**, is one of the components of the CAS. Equipping farmers and enterprises with such technologies require significant investments. The number of farmers and enterprises who have the financial capability to afford such tools and equipment is limited in Moldova. In addition, agricultural equipment and tools usually have high rates of depreciation and require continuous maintenance. In other words, purchasing and maintaining farming tools and equipment are not affordable for most CAS users. Therefore, financial incentives for agricultural tools and equipment can increase the affordability of the CAS at scale. Previous studies in Moldova showed that cash transfer incentives did not necessarily contribute to the use of CASs<sup>[7]</sup>. Considering that most of these tools and equipment are imported, legislation that provides tax breaks and subsidies for imports can increase the use of the CAS.

## Capacity Of The Users To Benefit From The CAS At Scale



The CAS has four farming practices (minimum or no-tillage, mulching, crop rotation, and use of perennial legumes) and two principles (long-term vision and farming systems approach). Previous studies showed that implementing these practices in the light of principles requires a significant departure from conventional agricultural methods. To enable the transition from traditional practices and principles to the CAS, it is necessary to provide capacity building. **Farmer field schools** are an innovation that can be used to achieve the required capacity building. Among others, they have i) the advantage of providing a range of different subjects in a single curriculum, ii) providing continuous demonstration opportunity, and iii) training the farmers and enterprises on the use of the practices and principles of the CAS in an integrated manner in practice rather than individual practices and abstract principles. In other words, farmer field schools can make significant contributions to the capacity development needs of farmers and enterprises to apply the CAS.

A suit of labour-saving technologies, agricultural tools, and equipment is another component of the CAS that requires capacity building. Some of these technologies are new to Moldova, and users need to have the capacity to use them. In addition, the literature on conservation agriculture outside of Moldova showed that the training is not effective unless it has significant applied components. Therefore, an **applied agricultural tool and equipment use course** has considerable potential to address the capacity development needs of the CAS. The course could be a part of the curriculum of the farmer field schools. They should also be provided stand-alone since some of the graduates of farmer field school programs will need training about new tools and technologies that will come to Moldova, and some enterprises can be interested only in the technological part.



Photo: IFAD  
Consolidated  
Programme  
Implementation Unit //  
www.ucipifad.md

## Effectiveness Of The CAS At Scale



The CAS is a knowledge-intensive system. It requires high-resolution customized data on biophysical and socio-economic systems. Moreover, due to climate change, and recent developments in international politics, the variability and intensity of shocks are increasing. These combined make **local integrated research and knowledge management system** including tools and practices for generating, disseminating, and using local applied knowledge, an essential complementary aspect for the successful implementation of the CAS. A pillar of the local management system is to understand the current capabilities of the public, private sector, and international organizations to serve the needs of the CAS. In addition, available information on the organizational system indicates a decentralized and loosely integrated knowledge generation and dissemination. A first step to map existing capabilities and consolidate such capabilities for the needs of the CAS is a green paper<sup>1</sup> on consolidating research and knowledge capabilities related to the Conservation Agriculture System. The green paper with systematic assessment of knowledge management capabilities and recommendations for consolidating them can improve the effectiveness of the CAS.

<sup>1</sup> A green paper is a tentative government report and consultation document of policy proposals for debate and discussion. A green paper represents the best that the government can propose on the given issue, but, remaining uncommitted, it is able without loss of face to leave its final decision open until it has been able to consider the public reaction to it.

## Efficiency Of The CAS At Scale



Currently, the CAS is a niche in Moldovan agriculture. Although every farmer and enterprise can implement a CAS, most of them will not be capable of implementing it profitably. Considering the resource limitations, it is necessary to identify the profile of the farmers and enterprises that are most suitable for successfully implementing the CAS. In addition, the variability of the farm and farmer/enterprise characteristics in Moldova is high. Therefore, it is necessary to consider a diverse set of variables to identify the best-fit farmers/enterprises that can benefit from the CAS. A **digital farmer/enterprise suitability assessment tool** can overcome the diversity of variables. By identifying which farmers can and cannot commercially benefit from the CAS, it is possible to design and develop more targeted instruments and support projects, increasing the efficiency of the investments done on the CAS.

Agricultural equipment and tools are significant parts of the cost of the farmers/enterprises implementing the CAS. Also, they usually have high depreciation rates and require continuous maintenance due to the nature of their work. To use them efficiently, it is necessary to keep their time under maintenance and repair at a minimum. In most circumstances, it is not easy to build the human and hardware capacity of the farmers and enterprises to deal with the maintenance and repair of their tools and equipment themselves. An excellent way to create sufficient maintenance and repair capacity to serve all the farmers/enterprises is to support existing workshops that can serve as hubs for different parts of Moldova. Since existing workshops do not have sufficient human and equipment capacity, an **agricultural tool and equipment repair support program** has immense potential to increase the efficiency of the CAS.



# 23

**COUNTRIES HAVE  
ASSESSED THEIR  
INNOVATIONS USING  
SCALING READINESS.  
MOLDOVA IS THE FIRST  
IN EUROPE**

## Scaling Readiness Of The Innovation Package

The Scaling Readiness of an innovation package is the **final metric** used to assess the impact at scale potential of the CAS. The scope of the Scaling Readiness of the innovation package goes beyond the components of the CAS, which were analyzed previously and include all the innovations in the Innovation Package Sheet and following diagnosis section.

The Scaling Readiness Assessment team has prepared a Scaling Readiness Assessment for the CAS Innovation Package using the published evidence in Part C, the Evidence Review. The assessment results are specific for Moldova in February and March 2021 for the contribution of the CAS to the resilience of the farmers in Moldova. It can differ for other countries, for different periods, and in achieving other goals.

The innovations in the CAS Innovation Package had a minimum Readiness score of 3 and a maximum Readiness score of 8 (Figure 2). Their Use score ranged from 0 to 6. The average Innovation Readiness Score was 5.67, and the average Innovation Use Score was 3.44. These corresponds to an average Scaling Readiness Score of 17.82 and a Scaling Readiness Level of 4<sup>2</sup>.

The Scaling Readiness Assessment of the CAS Innovation Package indicated that policies (brown-coloured innovations in Figure 2) relevant for achieving significant improvements in the more resilient farming sector in Moldova are relatively more mature and used more. After policies, services have on average higher Readiness, and the products in the package have the least Readiness and Use scores. Considering that policies necessitate a longer duration to improve, this picture presents a potential for quick improvements in the impact at scale potential of the CAS Innovation Package. The lowest Readiness and Use components are the factsheet about the economic benefits of the CAS, short champion benefit stories, and farmer field schools. Accessible resources on these three innovations indicated no applied evidence on how farmer field schools contributed to implementing the CAS. Although there was some scattered information about the economic benefits, there were no integrated, easily accessible video stories presenting the business case to implement the CAS.

---

2 Please see glossary for the interpretation of the measures.

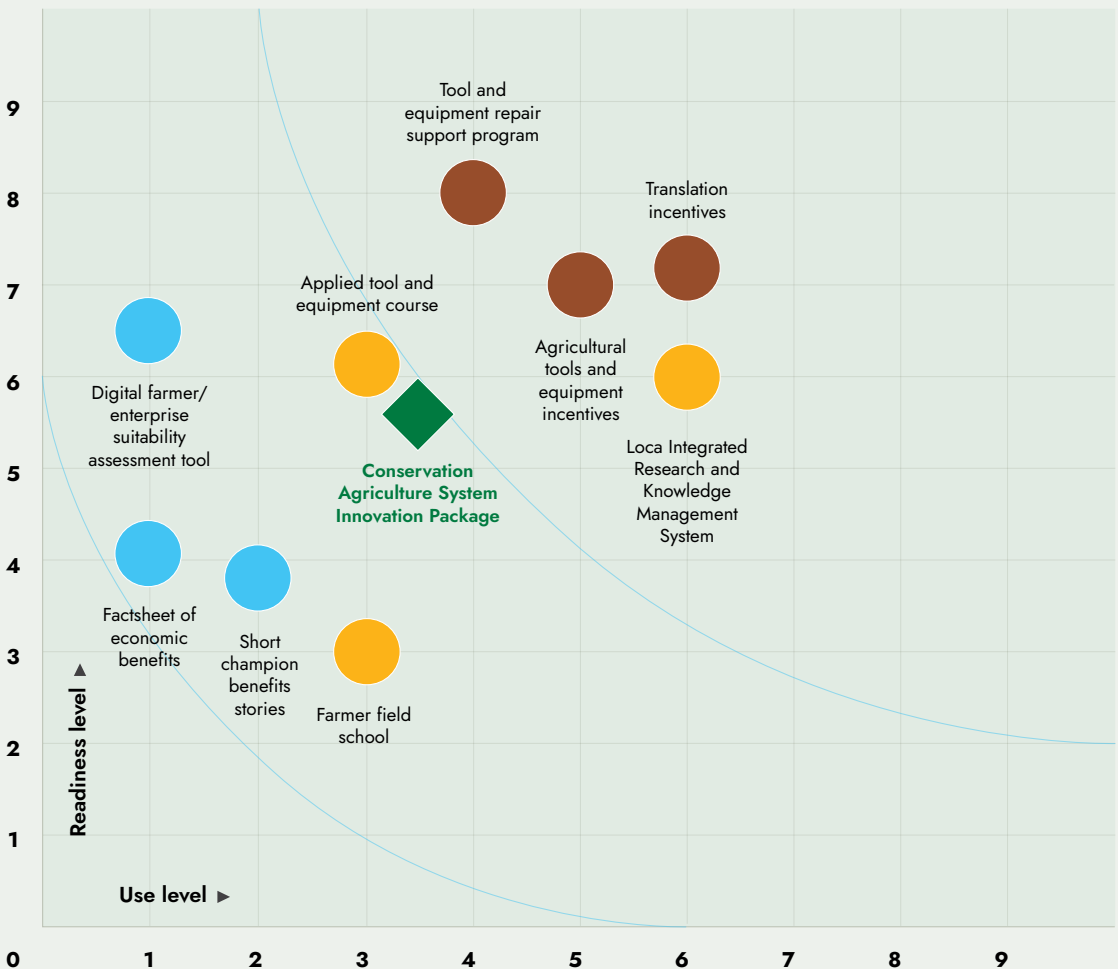
**Figure B2:**

Scaling Readiness Assessment of the Conservation Agriculture System Innovation Package For Moldova - 2021 March - More Resilient Farming

**CONSERVATION AGRICULTURE SYSTEM INNOVATION PACKAGE IN MOLDOVA FOR MORE RESILIENT FARMING, MARCH 2021**

- Product
- Policy
- Service
- ◆ All Package

The Conservation Agriculture System Innovation Package has an Average Readiness Level of **5.67** and an Average Use Level of **3.44**, corresponding to an Average Scaling Readiness Level of **17.82** and a Scaling Readiness Score of **4**.





**PART**

**C**

**SCALING READINESS  
EVIDENCE REVIEW  
FOR CONSERVATION  
AGRICULTURE SYSTEM  
IN MOLDOVA**

The Scaling Assessment Study for the CAS in Moldova for More Resilient Farming in March 2021 includes two Scaling Readiness Assessments. Based on the fact that the impact at scale potential of an innovation depends on the novel aspects concerning the existing innovation landscape, the Scaling Readiness Assessment of the CAS identifies the novel components of the system and measures the Readiness and Use scores of each of them. Afterward, Scaling Readiness does the same for the innovation package, i.e., the combination of innovations necessary to improve the impact at scale potential of the CAS in Moldova for achieving more resilient farming.

This Evidence Review provides a detailed explanation of the Readiness and Use levels of each of the components of the CAS and the innovations included in the CAS Innovation Package. It also links the study to Scaling Readiness's broader science and technical documentation and the conservation agriculture literature in Moldova and globally. To support further inquiries about the quality of the Scaling Readiness Assessment and contribute to the design of other research and management interventions, it provides a complete list of the resources used to carry out the assessment.

The Scaling Readiness Evidence Review is at the research and science level. It aims to systematically assess the evidence sources and technical information about using Scaling Readiness Metrics.

The Evidence Review is designed to be a stand-alone document for



designers,  
developers, and  
managers of specific  
innovations and  
components in CASs



researchers who  
conduct applied  
research on CASs



practitioners who are  
interested to learn  
more about doing  
Scaling Readiness  
Assessment

The basic information about the novel components of the CAS and the descriptions of the innovations in the CAS Innovation Package are not presented in detail in the Evidence Review. This information is available in the Scaling Readiness Assessment (Part B). The Evidence Review also does not articulate the implications of the findings for designing and implementing Scaling projects, programs, and policies. A synthesis of the findings and recommendations are provided in the Scaling Readiness Guidelines (Part A)

## SCALING READINESS ASSESSMENT OF THE CAS TO IMPROVE FARMING RESILIENCE IN MOLDOVA MARCH 2021 ONWARDS

The core innovation of this study is the **CAS in Moldova**. It consists of the following eight novel components.

### AGRICULTURAL PRACTICES



Minimum or no-tillage farming



Mulching



Crop rotation



Use of perennial legumes

### FARM MANAGEMENT PRINCIPLES



Long-term vision



Farming systems principles

### PRODUCT TYPE FARM INPUTS



High-value-added crops or varieties



Labour-saving technologies

These novel components were identified by assessing the available evidence base about the agriculture and rural sector in Moldova and the key informant interviews with the experts working in various research and development organizations in Moldova. The components might change across time depending on the changes in Moldova or reorientation of the objective from a more resilient farming system to another objective.

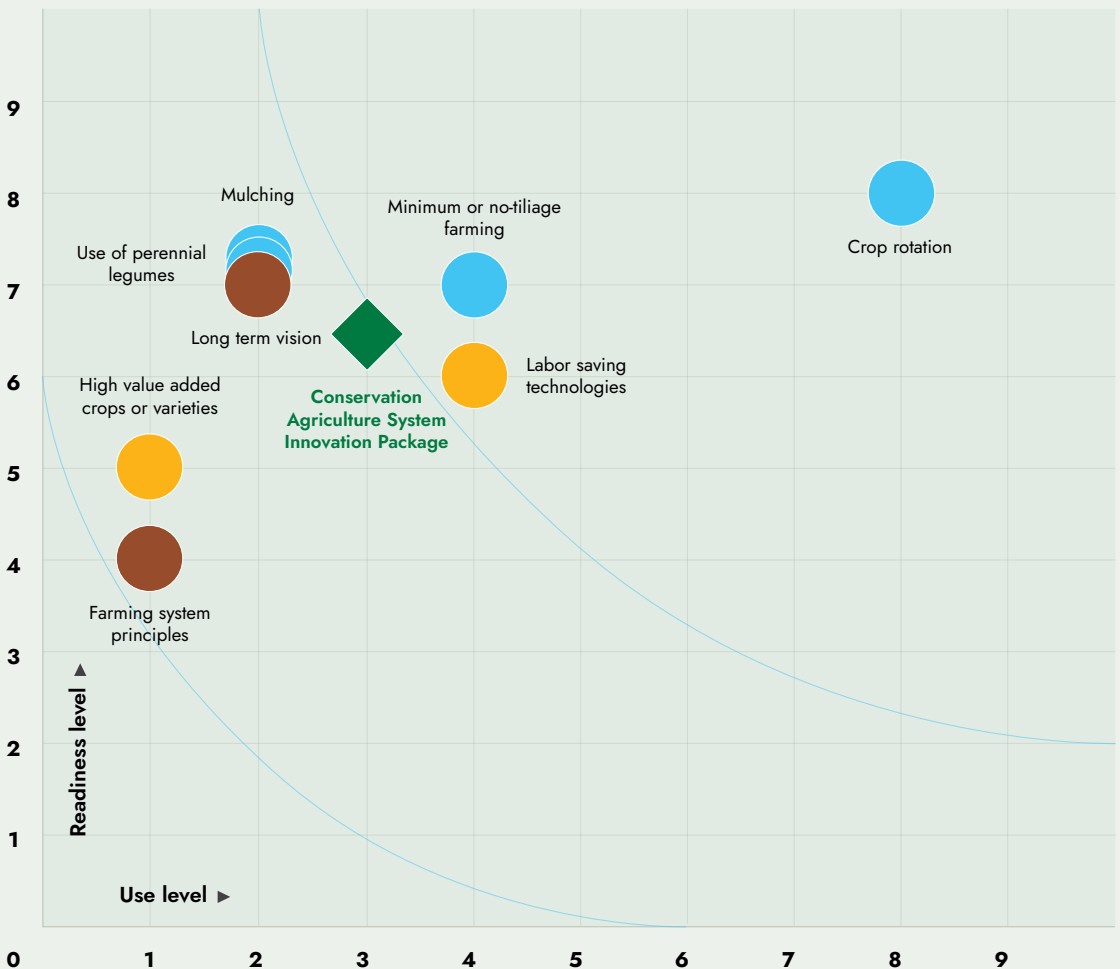
Each of the eight components has different Readiness and Use scores (Figure 1). Available evidence showed that average agricultural practices (Blue coloured components in Figure 1) have higher Readiness scores. In other words, they are more mature and have higher development status in Moldova for achieving more resilient agriculture. Among the components, crop rotation had the highest documented Use. It was shown that some farmers/enterprises in Moldova use crop rotation without receiving direct support from existing research for development projects. This was not the case for the other components of the CAS. The rest of the section presents specific scores and the evidence sources that support these scores in detail.

**Figure C1:**  
Scaling Readiness Assessment of  
the Conservation Agriculture System  
For Moldova - 2021 March - More Resilient Farming

**CONSERVATION AGRICULTURE SYSTEM  
IN MOLDOVA FOR MORE RESILIENT  
FARMING, MARCH 2021**

- Practice
- Principle
- Product
- ◆ INNOVATION

The Conservation Agriculture System in Moldova has an Average Innovation Readiness Level of **6.4** and an Average Use Level of **2.9**, corresponding to an Average Scaling Readiness Level of **18.3** and a Scaling Readiness Score of **4**.







## Minimum Or No-tillage Farming

Minimum or no-tillage farming had a relatively broader evidence base. Multiple resources <sup>[8–12]</sup> included clear evidence of the improvement in the long-term benefits of minimum and no-tillage in the farms, supported by the research and development projects in Moldova. Since the Scaling Readiness team could not identify evidence of the benefit for farms that did not receive direct support, the Readiness of the minimum or no-tillage farming was at the level of proven application in the controlled environment - level 7. In terms of the Use, there was evidence that minimum or no-tillage practices were implemented by the farmers/enterprises who were supported by research for development projects <sup>[13,14]</sup>. It was shown that some farmers/enterprises are not directly receiving support but still benefiting from such support <sup>[7]</sup>. This translated into a Use level of 4.



## Mulching

Several resources also validated the contribution of mulching. It was shown that mulching increased the resilience of farming in Moldova by increasing the productivity of the soil in the long term and reducing the external input requirement <sup>[8,15,16]</sup>. Since the evidence was taken from farms supported by the research and development interventions, not in uncontrolled conditions without support, the Readiness level was 7. Pilarova et al. 2018 have shown that mulching was used by the farmers/enterprises involved in the projects implemented by international and national research organizations <sup>[7]</sup>. Since the study could not identify any evidence of the use of mulching outside of the projects supported by research and development organizations, the Use score was 2.



## Crop Rotation

The Scaling Readiness Assessment team has identified many resources to benefit crop rotation in Moldova and other East European and Blacksea countries. Andrieș et al. and Baltag showed that crop rotation contributed to the resilience of farming in Moldova in the controlled conditions <sup>[17,18]</sup>. Many others discussed the use of crop rotation by farmers/enterprises in Moldova without support from research and development organizations <sup>[10,19–24]</sup>. Since there was early evidence of the contribution of the crop rotation without support, the Readiness level was 8. There was also more

evidence about the use of crop rotation. Multiple resources have shown that crop rotation was practised by the farmers/enterprises that were not involved in any research for development projects [8,25–27]. This corresponded to a higher Use level than the other components, with a Use level of 6.



### Use Of Perennial Legumes

Some studies argued for the benefit of perennial legumes on the resilience of farming in Moldova [9]. Olesa and Cerbari, Olfirovich presented some results on the benefits in Moldova in a controlled environment [28,29], and Andrieş et al. [17] showed the evidence on the benefit in Moldova. Therefore the Readiness level of perennial legumes was 7. In terms of using perennial legumes, a paper written by Pilarova was the only resource explicitly referring to the user dynamics [7]. It showed the use of perennial legumes by the partner farmers/enterprises of the research for development projects, which implies a Use level of 2.



### Long-term Vision

Two resources showed that having a long-term vision improved conservation agriculture's benefit outside Moldova [10,30]. Several others showed that the benefits are observed in Moldova as well [14,22,31]. This corresponded to a Readiness level of 7. There were resources explicitly mentioning the use of the long-term approach in the context of conservation agriculture in Moldova. Leah et al. noted that some of the research for development initiatives have a long-term vision [10], and the long-term vision was implemented by enterprises supported by international investors [14]. Since the use of the long-term vision was restricted to the projects and their few partners, the Use level was 2.



### Farming Systems Principles

The use of farming system principles in the context of the CAS in Moldova was proposed by Boincean [8] and was supported by conceptual studies of multiple other researchers in [8,32] and outside of Moldova [33–36]. However, no applied research showed

the contribution of the farming system approach in practice in Moldova. Therefore, the Readiness level of farming system principles was 4. The Scaling Readiness Assessment team could not identify any resource that explicitly refers to the use of farming system principles in conservation agriculture in Moldova. Thus, the Use level of the farming system approach in practice was 0.



### High-value-added Crops Or Varieties

Several studies showed that conservation agriculture is more viable for high-value-added crops instead of staples or food security crops outside Moldova [33,37,38]. However, the Scaling Readiness Assessment team could not find a resource to study the benefits of using high-value-added crops and comparing them with dominant cereals. These implied that the Readiness score of including high-value-added crops in the CAS was 5. The Scaling Readiness Assessment team found projects that promote high-value-added with a conservation agriculture approach [39,40]. Still, there was no evidence of implementation outside the project team and farmers/enterprises working with the projects. Therefore, the Use level was 1.



### Labour-saving Technologies

The benefits of using labour-saving technologies were presented in multiple resources outside of Moldova [41,42], and it was tested empirically in numerous countries [7,43]. However, the Scaling Readiness Assessment team could not identify any evidence that showed how using labour-saving technologies in a CAS benefited farming resilience in Moldova. Therefore, the Readiness level was 6. In terms of Use, it was revealed that some tools and agricultural equipment were used by farmers/enterprises, which are not directly supported by research for development projects but indirectly benefited from them [10,44,45]. This translated into a Use level of 4.

## SCALING READINESS ASSESSMENT OF THE CAS INNOVATION PACKAGE TO IMPROVE FARMING RESILIENCE IN MOLDOVA MARCH 2021 ONWARDS

The CAS alone is not enough to achieve impact at scale. To be able to show its full potential in improving the resilience of the farming in Moldova and achieve use at scale, it needs to be complemented by other compatible innovations that fit the conditions of Moldova. An innovation package is a set of innovations, including the CAS and other complementary innovations. These innovations are necessary to increase awareness of farmers/enterprises, convince them of the benefits of implementing the system, and ensure that the CAS is available, accessible, affordable, user-friendly, effective, and efficient.

The CAS Innovation Package has nine more innovations. In addition to the system described in the previous section has the following innovations belonging to three main categories, i.e., products, services, and policies.



### PRODUCTS

- Short benefits stories from conservation agriculture champions
- Factsheet of economic benefits
- Digital farmer/enterprise suitability assessment tool




### SERVICES

- Applied agricultural tool and equipment use and maintenance course
- Farmer field schools
- Local integrated research and knowledge management system



### POLICIES

- Financial incentives for agricultural tools and equipment
- Translation incentives for applied conservation agriculture publications
- Investment support program for agricultural tool and equipment repair



**CONSERVATION  
AGRICULTURE SYSTEM  
CONSISTS OF NOT  
ONLY AGRICULTURAL  
PRACTICES, BUT ALSO  
FARM MANAGEMENT  
PRINCIPLES, PRODUCTS,  
AND SERVICES**

The Readiness and Use scores of these nine innovations differ. Among them, the policy innovations have larger Readiness scores indicating that the policy domain in conservation agriculture is more advanced than the products and services domain (Figure 2). None of the innovations has a higher Use level than six, indicating that the existing knowledge of the implementers about the CAS is minimal beyond the farmers/enterprises involved in the projects. Among the components, farmer field schools, short champion benefit stories, factsheet of economic benefits, and applied tools and equipment courses have the lowest Readiness and Use scores. In the Scaling Readiness approach, they are the bottlenecks that hinder the impact of the CAS at scale and need to be prioritized by the upcoming interventions on conservation agriculture. In the rest of the section, specific scores of the innovations in the CAS Innovation Package and the evidence sources that support these scores are presented in detail.

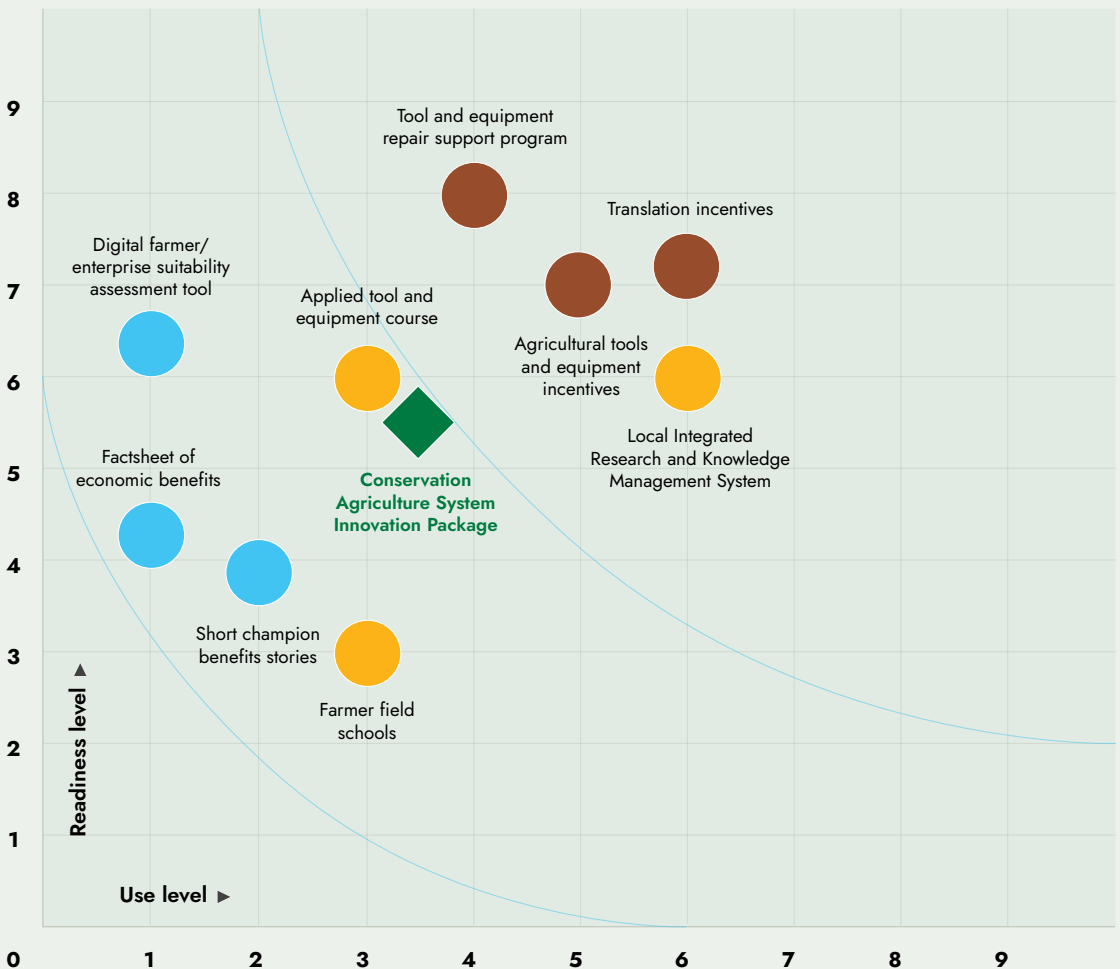
**Figure C2:**

Scaling Readiness Assessment of the Conservation Agriculture System Innovation Package For Moldova - 2021 March - More Resilient Farming

**CONSERVATION AGRICULTURE SYSTEM INNOVATION PACKAGE IN MOLDOVA FOR MORE RESILIENT FARMING, MARCH 2021**

- Product
- Policy
- Service
- ◆ All Package

The Conservation Agriculture System Innovation Package has an Average Readiness Level of **5.67** and an Average Use Level of **3.44**, corresponding to an Average Scaling Readiness Level of **17.82** and a Scaling Readiness Score of **4**.





## Short Benefits Stories From Conservation Agriculture Champions To Improve Awareness

Although benefit stories are a common way of marketing in many other sectors and youtube is one of the most visited internet sites in Moldova, there was only one resource that provided evidence on the contribution of the short benefit stories to the awareness about the CAS. It proposed that short benefit stories can improve communication about sustainable agriculture <sup>[46]</sup>. This corresponded to a Readiness level of 4. In Moldova, such benefit stories are done as interviews. A few projects made interviews published in [Agrobizniz.md](#)<sup>[47,48]</sup> They show that some of the farmers/enterprises implementing the CAS and supported by the CAS Projects have seen the interviews' records in Agrobizniz.md. This translated into Use level 2.



## Factsheet Of Economic Benefits To Convince The Farmers/Enterprises

Factsheets are one-pagers that summarize the key numbers that compellingly show the economic benefits. Factsheets were proposed as an alternative for convincing farmers/enterprises to implement a CAS and tested in other countries <sup>[49]</sup>. However, the Scaling Readiness Assessment team could not find a clear example of a factsheet used for convincing farmers/enterprises. Therefore, the Readiness score of the factsheet is 4. Multiple factsheets were produced by a recent project, **InfOrganic**<sup>[50]</sup>, indicating their use in a project setup. However, since there was no explicit information about the nature and number of users, the Use level of the factsheet of economic benefit is 1.



## Digital Farmer/Enterprise Suitability Assessment Tool To Increase The Efficiency

Several tools that assess different aspects of the farmers and their potential in implementing various components of the CAS have been published for other countries <sup>[51,52]</sup> and Moldova <sup>[7,40,53]</sup>. Although these tools can partially address the suitability assessment needs, the Scaling Readiness Assessment team could not identify any single tool that directly assesses the farmer/enterprise suitability in Moldova. Therefore, the Readiness score is 6. Cimpoiș 2012 showed that some of the similar tools were used for many farmers/enterprises that were not directly involved in the

research and development projects but linked to the projects indirectly, corresponding to a Use level of 5.



### **Applied Agricultural Tool And Equipment Use And Maintenance Course To Increase The Capacity Of Farmers/Enterprises**

Applied courses on agricultural tool and equipment use have been included in the design of projects aiming to improve CASs in other countries through strengthening the capacity of farmers/enterprises <sup>[54,55]</sup>. Since the Scaling Assessment team could not identify any resources studying the contribution of such training to the CAS, the Readiness level of the applied courses was 6. The applied course has been provided to farmers/enterprises in Moldova through several projects implemented by The integrated Unit for the Implementation of IFAD Programs and the Ministry of The Agriculture and Food Industry, in partnership with the National Agency for Rural Development (ACSA) and the company Elit-tehnica <sup>[44]</sup>. This corresponded to a use level of 3.



### **Farmer Field Schools To Increase The Capacity Of Farmers/Enterprises**

Farmer field schools were argued to be one of the innovations that can increase the capacity of the farmers/enterprises in Moldova <sup>[31]</sup>. The Scaling Readiness team could not identify any empirical study showing how farming field schools contributed to the capacity of the farmers/enterprises implementing the CAS in general and specifically for Moldova. Therefore, the Readiness level of farmer field schools is 3. The farmer field school with a CAS was kicked off in 2018 <sup>[56,57]</sup> and operationalized in 11 districts by a part of the Rural Program for Inclusive Economic and Climate Resilience of IFAD <sup>[58]</sup>. Farmers/enterprises are supported there with IFAD funding. This corresponds to a Use level of 3.



# 140

**EVIDENCE SOURCES  
HAVE BEEN STUDIED IN  
DETAIL TO COMPLETE  
THIS SCALING READINESS  
ASSESSMENT**





### **Local Integrated Research And Knowledge Management System To Increase The Effectiveness**

Local integrated research and knowledge management systems were considered to improve the effectiveness of the CAS outside of Moldova <sup>[59,60]</sup>, and a local system that captures some parts of the CAS was tested in Moldova <sup>[40]</sup>. Since the test results are not published yet, the local integrated research and knowledge management system has a Readiness of 6. The integrated system was used within the projects supported by the European Union <sup>[38]</sup>. It was also used later outside of the direct support of the EU <sup>[40]</sup>. Therefore, the Use level of the local integrated system is 6.



### **Financial Incentives For Agricultural Tools And Equipment To Increase The Affordability**

Agricultural tools and equipment can be used to increase the affordability of the CAS. The contribution of financial incentives for purchasing such tools and equipment was tested and shown to be effective outside of Moldova <sup>[51,52,61]</sup> and in Moldova <sup>[7,40,53]</sup> for selected farmers/enterprises. This corresponds to a Readiness level of 7. Also, the use of the financial incentives was shown for the farmers/enterprises directly working with some support projects <sup>[7]</sup>. Research showed that some farmers who were not involved with the projects but linked to the farmers/enterprises involved <sup>[53]</sup> also used the financial incentives. This corresponds to a Use level of 5.



### **Translation Incentives For Applied Conservation Agriculture Publications To Increase The Capacity Of Farmers/Enterprises**

Translation incentives were considered an essential tool for improving the knowledge base that can be used to increase farmers' capacity <sup>[62]</sup> and were shown to contribute to capacity building in the context of a project in Moldova <sup>[40]</sup>. This corresponds to a Readiness level of 7. Also, it was shown that in Moldova, translation support was used by not only the partners of projects <sup>[63]</sup> but also by stakeholders who are not partners of the projects <sup>[32]</sup>. Therefore, the Use level of the translation incentives for applied conservation agriculture publications is 6.



## **Agricultural Tool And Equipment Repair Investment Support Program To Increase The Efficiency**

Some studies discussed the models for supporting the investments in repairing agricultural tools and practices <sup>[7]</sup>. They showed how supporting the investments in the capacity to repair agricultural tools and equipment contributes to the CAS outside Moldova <sup>[64]</sup>. Studies showed that it contributed to the efficiency of conservation agriculture in projects supported by international investors <sup>[65]</sup> and outside of the projects <sup>[66]</sup>. These correspond to a Readiness level of 8. It was shown that agricultural tool and equipment repair investments support instruments were used by some farmers/enterprises not directly involved in the research for development projects <sup>[58,66,67]</sup>, corresponding to a Use level of 4.

# ANNEX-1: INNOVATION READINESS LEVELS <sup>[1]</sup>

Innovation Readiness Level	Innovation Readiness Category	Description
0	Idea	Thinking about a novelty's ability to solve a problem
1	Hypothesis (proven)	Cognitively validated idea: Hypothesis
2	Basic Model (unproven)	Desktop research on the hypotheses' ability to solve a problem using existing conceptual/theoretical evidence
3	Basic Model (proven)	Conceptual/theoretical validated set of interrelated hypotheses: basic model
4	Application Model (unproven)	Desktop research on the basic model's ability to solve a problem using existing applied evidence
5	Application Model (proven)	Validated basic model using applied evidence: applied model
6	Application (unproven)	Experimental research on application model's ability to solve a problem in the controlled conditions
7	Application (proven)	Validated applied model using experimental evidence: application
8	Innovation (unproven)	Testing the capacity of the application to generate value by solving a problem in a specific uncontrolled context
9	Innovation (proven)	Validated application using evidence on the value: innovation

# ANNEX-2: INNOVATION USE LEVELS <sup>[1]</sup>

Innovation Use Level	Innovation Use Category	Description
0	None	The novelty is not used for achieving the objective of the intervention in the specific spatial-temporal context where the innovation is to contribute to achieving impact
1	Team	The novelty is only used by the intervention team
2	Partners (rare)	The novelty has some use by the intervention partners
3	Partners (common)	The novelty is commonly used by the intervention partners
4	Unconnected designers and developers (rare)	The novelty has some use by designers and developers who are not directly involved in the intervention
5	Unconnected designers and developers (common)	The novelty is commonly used by designers and developers who are not directly involved in the intervention
6	Unconnected delivery and use support stakeholders (rare)	The novelty has some use by delivery and use support stakeholders who are not directly involved in the intervention
7	Unconnected delivery and use support stakeholders (common)	The novelty is commonly used by delivery and use support stakeholders who are not directly involved in the intervention
8	Unconnected end-users (rare)	The novelty has some use by the end or final users who are not involved in the intervention
9	Unconnected end-users (common)	The novelty is commonly used by the end or final users who are not involved in the intervention

# ANNEX-3: EVIDENCE SOURCES REFERRED IN THE EVIDENCE REVIEW

1. Sartas M, Schut M, Proietti C, Thiele G, Leeuwis C. Scaling Readiness: Science and practice of an approach to enhance the impact of research for development. *Agric Syst.* 2020;183: 102874. doi:10.1016/j.agsy.2020.102874
2. Sartas M, Schut M, van Schagen B, Velasco C, Thiele G, Proietti C, et al. Scaling readiness concepts, practices, and implementation. International Potato Center; 2020. Available: <http://biblio1.iita.org/handle/20.500.12478/6812>
3. Sartas M, Kangethe E, Wu N, Dror I. Scaling readiness report and scaling plan for training and certification approach for small scale pig feed producers in Uganda. ILRI; 2020. Available: <https://hdl.handle.net/10568/110324>
4. Wollni M, Lee DR, Thies JE. Conservation agriculture, organic marketing, and collective action in the Honduran hillsides. *Agric Econ.* 2010;41: 373–384. doi:10.1111/j.1574-0862.2010.00445.x
5. Khan Z, Midega C, Pittchar J, Pickett J, Bruce T. Push-pull technology: a conservation agriculture approach for integrated management of insect pests, weeds and soil health in Africa: UK government's Foresight Food and Farming Futures project. *Int J Agric Sustainability.* 2011;9: 162–170. Available: <https://www.tandfonline.com/doi/abs/10.3763/ijas.2010.0558>
6. Umar BB, Aune JB, Johnsen FH, Lungu OI. Options for improving smallholder conservation agriculture in Zambia. *J Agric Sci.* 2011;3: 50. Available: [http://oar.icrisat.org/7608/1/Conservation\\_Agriculture\\_Global\\_Pro Prospects\\_and\\_Challenges.pdf](http://oar.icrisat.org/7608/1/Conservation_Agriculture_Global_Pro Prospects_and_Challenges.pdf)

7. Pilarova T, Bavorova M, Kandakov A. Do farmer, household, and farm characteristics influence the adoption of sustainable practices? The evidence from the Republic of Moldova. *Int J Agric Sustainability*. 2018;16: 367–384. doi:10.1080/14735903.2018.1499244
8. Boincean B, Kassam A, Basch G, Reicosky D, Gonzalez E, Reynolds T, et al. Towards Conservation Agriculture systems in Moldova. *AIMS Agriculture and Food*. 2016;1: 369–386. doi:10.3934/agrfood.2016.4.369
9. Lal R, Stewart BA. *Soil Management of Smallholder Agriculture*. CRC Press; 2014. Available: <https://play.google.com/store/books/details?id=7SjcBQAAQBAJ>
10. Leah T. Improving conservation practices to protect soil and water quality in agriculture of Moldova. *Scientific Papers: Management, Economic Engineering in Agriculture & Rural Development*. 2016;16. Available: <http://search.ebscohost.com/login.px?direct=true&profile=ehost&scope=site&authtype=crawler&jrnl=22847995&AN=116393685&h=SOITUbC0Dm-3dXCsmnXe%2BjjWtdL4FBuXFRtXE8erLM%2FNpkmfYUdDnAs7-1B8V6pQ66OLzmy7%2BQol%2F3FHUXH4HgeQ%3D%3D&crl=c>
11. Lal R. Small landholder farming and global food security. *Advances in Soil Science, Soil Management of Smallholder Agriculture* CRC Press, Taylor & Francis, Group. 2014;6000.
12. Rurac M, Zbancă A, Baltag G, Bacean I, Cazmalî N, Bostan M. *GHID PRACTIC ÎN DOMENIUL AGRICULTURII CONSERVATIVE* Practical guide in the field of conservative agriculture. 2021.
13. Veaceslav Ciornîi – fermierul care de peste 10 ani implementează sistemul No-till. 15 Apr 2020 [cited 11 Apr 2021]. Available: <https://agrobiznes.md/veaceslav-ciornii-fermierul-care-de-pestre-10-ani-implementeaza-sistemul-no-till-de-lucrarea-a-solului.html>
14. Vitalie B. Experiența aplicării agriculturii conservative în S.R.L. „Natcubi Agro”, s. Larga Nouă, Cahul. *International Conference on Conservative Agriculture* ; March 29-30, 2021; Moldova. Available: [http://www.ucipifad.md/wp-content/uploads/2021/04/Experienta-aplicarii-Agriculturii-Conservative\\_SRL-Natcubi-Agro.pdf](http://www.ucipifad.md/wp-content/uploads/2021/04/Experienta-aplicarii-Agriculturii-Conservative_SRL-Natcubi-Agro.pdf)

15. Lal R. Abating Climate Change and Feeding the World Through Soil Carbon Sequestration. In: Dent D, editor. Soil as World Heritage. Dordrecht: Springer Netherlands; 2014. pp. 443–457. doi:10.1007/978-94-007-6187-2\_47
16. Ecovisio, AED, LED. Ce este mulcirea? Ecovisio, AED, LED; 2020.
17. Andrieș S, Cerbari V, Filipciuc V. The Quality of Moldovan Soils: Issues and Solutions. In: Dent D, editor. Soil as World Heritage. Dordrecht: Springer Netherlands; 2014. pp. 9–15. doi:10.1007/978-94-007-6187-2\_2
18. Baltag G. Eficiența economică în aplicarea agriculturii conservative în Republica Moldova. Agricultura conservativă-modalitate durabilă de gestiune și dezvoltare a agriculturii în contextul rezilienței climaterice în Republica Moldova; 2021. Available: [http://www.ucipifad.md/wp-content/uploads/2021/04/Eficien%C8%9Ba-economic%C4%83-%C3%AEn-aplicarea-agriculturii-conservative-%C3%AEn-R.M\\_Baltag-Gr..pdf](http://www.ucipifad.md/wp-content/uploads/2021/04/Eficien%C8%9Ba-economic%C4%83-%C3%AEn-aplicarea-agriculturii-conservative-%C3%AEn-R.M_Baltag-Gr..pdf)
19. Cerbari V, Leah T. METHOD OF REMEDIATION AND SUSTAINABLE USE OF SOILS TESTED IN THE REPUBLIC OF MOLDOVA. Scientific Papers-Series A-Agronomy. 2020;63: 48–55. Available: [https://apps.webofknowledge.com//full\\_record.do?product=WOS&search\\_mode=GeneralSearch&qid=3&SID=F2ZC1B-KZ8ZPQr5MTWco&page=1&doc=1](https://apps.webofknowledge.com//full_record.do?product=WOS&search_mode=GeneralSearch&qid=3&SID=F2ZC1B-KZ8ZPQr5MTWco&page=1&doc=1)
20. Leah T, Senicovscaia I. Modifying the properties of the zonal soils used in agriculture of Moldova: monitoring and management. Agronomy Series of Scientific Research/Lucrari Stiintifice Seria Agronomie. 2013;56. Available: [http://www.uaiasi.ro/revagrois/PDF/2013-2/paper/2013-56\(2\)\\_03-en.pdf](http://www.uaiasi.ro/revagrois/PDF/2013-2/paper/2013-56(2)_03-en.pdf)
21. Leah T. Agriculture and soils of the Republic of Moldova: Assessment, findings, solutions. Agrarian Economy and Rural Development-Realities and Perspectives for Romania 6th Edition of the International Symposium, November 2015, Bucharest. Bucharest: The Research Institute for Agricultural Economy and Rural ...; 2015. pp. 330–336. Available: <https://www.econstor.eu/handle/10419/163321>



- 22.** Boincean BP, Dent D. Scientific Evidence on the Contribution of Crop Rotation to More Sustainable Agriculture. In: Dent D, editor. Soil as World Heritage. Dordrecht: Springer Netherlands; 2014. pp. 479–489. doi:10.1007/978-94-007-6187-2\_50
- 23.** Ecovisio, AED, LED. Ce reprezintă asolamentul? Ecovisio, AED, LED; 2020.
- 24.** Sistemul conservativ de lucrare a solului - fertilitate bună, cheltuieli reduse. 26 Feb 2021 [cited 11 Apr 2021]. Available: <https://agrobiznes.md/sistemul-conservativ-de-lucrare-a-solului-fertilitate-buna-cheltuieli-reduse.html>
- 25.** Leah T. Land degradation-a major problem for agriculture of Moldova. Актуальні проблеми агрохімії та ґрунтознавства: матеріали. 2016; 82. Available: <http://lnau.edu.ua/lnau/files/%D0%97%D0%B1%D1%96%D1%80%D0%BD%D0%B8%D0%BA%20%D0%86%D0%BD%D1%82%D0%B5%D1%80%D0%BD%D0%B5%D1%82%20%D0%BA%D0%BE%D0%BD%D1%84%D0%B5%D1%80%D0%B5%D0%BD%D1%86%D1%96%D1%972016.pdf#page=82>
- 26.** Boincean B, Voloşciuc L, Rurac M, Hurmuzachi I, Baltag G. Agricultura Conservativă: Manual pentru producători agricoli și formatori. USARB; 2020. Available: <http://dspace.usarb.md:8080/jspui/handle/123456789/4639>
- 27.** Exemple de asolamente pentru sistemele de agricultură conservativă și convențională. 13 Mar 2018 [cited 11 Apr 2021]. Available: <https://agrobiznes.md/exemple-de-asolamente-pentru-sistemele-de-agricultura-conservativa-si-conventionala.html>
- 28.** Olesea C, Cerbari V. Ecological Efficiency of the Implementation Technology of the Mini-Till and No-Till Soil Tillage in the Republic of Moldova. ProEnvironment Promediu. 2019;12. Available: <http://search.ebscohost.com/login.aspx?direct=true&profile=ehost&scope=site&authtype=crawler&jrnl=18446698&AN=141502928&h=r7fM2wzrMsvFS7Rmdfy%2FBTWvNjJ6PdSafQI%2BhIJDzT%2Baa4UguUCHa%2B9oBirG7a4%2BmWoQHaN1R6ceThmMuLCHZg%3D%3D&crl=c>

29. Olifirovich V, Makoviychuk S, Kolenchuk M, Cossack GV. Sown and Natural Grassland for Soil Protection and Productivity in the Forest Steppe of Ukraine. In: Dent D, editor. *Soil as World Heritage*. Dordrecht: Springer Netherlands; 2014. pp. 421–424. doi:10.1007/978-94-007-6187-2\_43
30. Pittelkow CM, Linqvist BA, Lundy ME, Liang X, van Groenigen KJ, Lee J, et al. When does no-till yield more? A global meta-analysis. *Field Crops Res.* 2015;183: 156–168. doi:10.1016/j.fcr.2015.07.020
31. Boincean B, Lal R. Conservation agriculture on chernozems in the republic of moldova. *Soil Management of Smallholder Agriculture*. CRC Press; 2014. pp. 203–221. doi:10.1201/b17747
32. Boincean B, Dent D. *Farming the Black Earth: Sustainable and Climate-Smart Management of Chernozem Soils*. Springer Nature; 2019. Available: <https://play.google.com/store/books/details?id=FWSsDwAAQBAJ>
33. Rockstrom J, Kaumbutho P, Mwalley P, Temesgen M. Conservation Farming among Small-Holder Farmers in E. Africa: Adapting and Adopting Innovative Land Management Options. In: García-Torres L, Benites J, Martínez-Vilela A, Holgado-Cabrera A, editors. *Conservation Agriculture: Environment, Farmers Experiences, Innovations, Socio-economy, Policy*. Dordrecht: Springer Netherlands; 2003. pp. 459–469. doi:10.1007/978-94-017-1143-2\_56
34. Baudron F, Thierfelder C, Nyagumbo I, Gerard B. Where to Target Conservation Agriculture for African Smallholders? How to Overcome Challenges Associated with its Implementation? Experience from Eastern and Southern Africa. *Environments - MDPI.* 2015;2: 338–357. doi:10.3390/environments2030338
35. Margenot AJ, Paul BK, Sommer RR, Pulleman MM, Parikh SJ, Jackson LE, et al. Can conservation agriculture improve phosphorus (P) availability in weathered soils? Effects of tillage and residue management on soil P status after nine years in a Kenyan Oxisol. *Soil Tillage Res.* 2017;166: 157–166. doi:10.1016/j.still.2016.09.003

36. Snapp S, Kebede Y, Wollenberg L, Dittmer KM, Brickman S, Egler C, et al. Agroecology and climate change rapid evidence review: Performance of agroecological approaches in low-and middle-income countries. 2021. Available: <https://cgspace.cgiar.org/handle/10568/113487>
37. Kurishbayev A. A Strategy for Soil Conservation Farming in Northern Kazakhstan. In: García-Torres L, Benites J, Martínez-Vilela A, Holgado-Cabrera A, editors. Conservation Agriculture: Environment, Farmers Experiences, Innovations, Socio-economy, Policy. Dordrecht: Springer Netherlands; 2003. pp. 133–138. doi:10.1007/978-94-017-1143-2\_16
38. CONDRAȚCHI L, Movileanu P, Movileanu V. THE PREMISES OF ECOLOGICAL AGRICULTURE DEVELOPMENT IN THE REPUBLIC OF MOLDOVA. *agronomyjournal.usamv.ro*. Available: <http://www.agronomyjournal.usamv.ro/pdf/vol55/Art54.pdf>
39. Ecovisio, AED, LED. Ce este înierbarea printre rânduri? Ecovisio; AED; LED; 2020.
40. Lenz J, Neumann C. Raport privind statutul sectorului agro-alimentar ecologic din Moldova. Ekoconnect; 2020. Report No.: 2820OE002.
41. Dent D, editor. Soil as World Heritage. Springer, Dordrecht; 2014. doi:10.1007/978-94-007-6187-2
42. Benites JR, Ashburner JE. FAO's role in promoting conservation agriculture. Conservation Agriculture. 2003. Available: [https://link-springer-com.ezproxy.library.wur.nl/chapter/10.1007/978-94-017-1143-2\\_17](https://link-springer-com.ezproxy.library.wur.nl/chapter/10.1007/978-94-017-1143-2_17)
43. Kassam A, Derpsch R, Friedrich T. Global achievements in soil and water conservation: The case of Conservation Agriculture. *International Soil and Water Conservation Research*. 2014;2: 5–13. doi:10.1016/S2095-6339(15)30009-5
44. Seminar practic destinat producătorilor agricoli din țară. 29 May 2015 [cited 11 Apr 2021]. Available: <https://agrobiznes.md/promovarea-sistemului-de-agricultura-conservativa-seminare-de-instruire-pentru-producatorii-agricoli.html>

- 45.** Oleg Negura, producător: „Datorită sistemului mini till munca în câmp a devenit mult mai ușoară și eficientă”. 23 Feb 2019 [cited 11 Apr 2021]. Available: <https://agrobiznes.md/oleg-negura-producator-datorita-sistemului-mini-till-munca-in-camp-a-devenit-mult-mai-uso-ara-si-eficienta.html>
- 46.** Ionitescu S, Popovici DA, Hatzilygeroudis I, Vorovenci AE, Duca A, Others. Online platform and training methodology in mobivet 2.0: the optimum tool for self-directed learners and trainers in vocational education and training. *Scientific Papers Series Management, Economic Engineering in Agriculture and Rural Development*. 2014;14: 351–357. Available: [http://managementjournal.usamv.ro/pdf/vol\\_14/old.Volume\\_14\\_3\\_2014.pdf#page=354](http://managementjournal.usamv.ro/pdf/vol_14/old.Volume_14_3_2014.pdf#page=354)
- 47.** Adrian Cepoi, fermier: Recomand tuturor fermierilor să treacă la tehnologiile moderne. 16 Aug 2020 [cited 11 Apr 2021]. Available: <https://agrobiznes.md/adrian-cepoi-fermier-recomand-tuturor-fermierilor-sa-treaca-la-tehnologiile-moderne.html>
- 48.** Eugen Adam, fermier: Până la urmă, agricultura conservativă este unica alternativă. 22 Oct 2020 [cited 11 Apr 2021]. Available: <https://agrobiznes.md/eugen-adam-fermier-pana-la-urma-agricultura-conservativa-este-unica-alternativa.html>
- 49.** De Wrachien D. Land Use Planning: A Key to Sustainable Agriculture. In: García-Torres L, Benites J, Martínez-Vilela A, Holgado-Cabrera A, editors. *Conservation Agriculture: Environment, Farmers Experiences, Innovations, Socio-economy, Policy*. Dordrecht: Springer Netherlands; 2003. pp. 471–483. doi:10.1007/978-94-017-1143-2\_57
- 50.** AED. [cited 12 Apr 2021]. Available: <http://www.aed.org/resurse>
- 51.** Weissbac M, Isensee E, Brunotte J, Sommer C. The Use of Powerful Machines in Different Soil Tillage Systems. In: García-Torres L, Benites J, Martínez-Vilela A, Holgado-Cabrera A, editors. *Conservation Agriculture: Environment, Farmers Experiences, Innovations, Socio-economy, Policy*. Dordrecht: Springer Netherlands; 2003. pp. 367–373. doi:10.1007/978-94-017-1143-2\_44

52. Saxton KE, Morrison JE. Farm Machines for Large-Scale Conservation Agriculture. In: García-Torres L, Benites J, Martínez-Vilela A, Holgado-Cabrera A, editors. Conservation Agriculture: Environment, Farmers Experiences, Innovations, Socio-economy, Policy. Dordrecht: Springer Netherlands; 2003. pp. 255–262. doi:10.1007/978-94-017-1143-2\_31
53. Cimpoieș L. Agricultural subsidizing policy and its efficiency: the case of Moldova. *Sci Pap Univ Kansas Nat Hist Mus.* 2012;12: 74–77. Available: <http://dspace.uasm.md/handle/123456789/4760>
54. Harizanova-Metodieva T, Others. Dairy business: the case of Bulgarian dairy cattle farmers. *Sci Pap Univ Kansas Nat Hist Mus.* 2014; 95. Available: [http://managementjournal.usamv.ro/pdf/vol\\_14/old.Volume\\_14\\_3\\_2014.pdf#page=98](http://managementjournal.usamv.ro/pdf/vol_14/old.Volume_14_3_2014.pdf#page=98)
55. El Titi A. Non-Inversion Tillage in Integrated Farming Concepts: Prospects and Constraints of Cropping Systems in the Southwest of Germany. In: García-Torres L, Benites J, Martínez-Vilela A, Holgado-Cabrera A, editors. Conservation Agriculture: Environment, Farmers Experiences, Innovations, Socio-economy, Policy. Dordrecht: Springer Netherlands; 2003. pp. 211–219. doi:10.1007/978-94-017-1143-2\_26
56. IFAD anunță concurs pentru organizarea seminarelor de instruire în cadrul Școlilor de câmp pentru fermieri. 26 Mar 2018 [cited 12 Apr 2021]. Available: <https://agrobiznes.md/ifad-anunta-concurs-pentru-organizarea-seminarelor-de-instruire-in-cadrul-scolilor-de-cimp-pentru-fermieri.html>
57. UCIP IFAD a evaluat rezultatele înregistrate în școlile de câmp pe parcursul anului 2018. 13 Feb 2019 [cited 12 Apr 2021]. Available: <https://agrobiznes.md/ucip-ifad-a-evaluat-rezultatele-inregistrate-in-scolile-de-camp-pe-parcursul-anului-2018.html>
58. IFAD. Programul Rural de Reziliență Economico-Climatică Incluzivă (IFAD VI) – Agricultură Conservativă și Lanțuri Valorice. [cited 12 Apr 2021]. Available: <https://finantare.gov.md/programul-rural-de-reziliencia-economico-climatica-incluziva-ifad-vi-agricultura-conservativa-si-lanturi-valorice/>

59. Pieri C. Strategies for International Cooperation. In: García-Torres L, Benites J, Martínez-Vilela A, Holgado-Cabrera A, editors. Conservation Agriculture: Environment, Farmers Experiences, Innovations, Socio-economy, Policy. Dordrecht: Springer Netherlands; 2003. pp. 435–444. doi:10.1007/978-94-017-1143-2\_53
60. Harrington LW. A World of Conservation Agriculture. In: García-Torres L, Benites J, Martínez-Vilela A, Holgado-Cabrera A, editors. Conservation Agriculture: Environment, Farmers Experiences, Innovations, Socio-economy, Policy. Dordrecht: Springer Netherlands; 2003. pp. 159–164. doi:10.1007/978-94-017-1143-2\_19
61. Dauphin F. Investing in Conservation Agriculture. In: García-Torres L, Benites J, Martínez-Vilela A, Holgado-Cabrera A, editors. Conservation Agriculture: Environment, Farmers Experiences, Innovations, Socio-economy, Policy. Dordrecht: Springer Netherlands; 2003. pp. 445–456. doi:10.1007/978-94-017-1143-2\_54
62. Elueze IN. Towards Evidence-Informed Agriculture Policy Making: Investigating the Knowledge Translation Practices of Researchers in the National Agriculture Research Institutes in Nigeria. Western University. 2016. Available: <https://ir.lib.uwo.ca/etd/4237/>
63. Millns J. Agriculture and Rural Cooperation Examples from Armenia, Georgia, and Moldova. FAO; 2013. Report No.: 2013-2.
64. Bachman T. «Improved Cereal Production Technology» FAO Project on Conservation Agriculture in Mongolia. In: García-Torres L, Benites J, Martínez-Vilela A, Holgado-Cabrera A, editors. Conservation Agriculture: Environment, Farmers Experiences, Innovations, Socio-economy, Policy. Dordrecht: Springer Netherlands; 2003. pp. 235–242. doi:10.1007/978-94-017-1143-2\_28
65. Litvin A, Petraşcu S. The impediments existing in the investment process in the Republic of Moldova. Sci Pap Univ Kansas Nat Hist Mus. 2016 [cited 12 Apr 2021]. Available: <http://dspace.uasm.md/handle/123456789/2597>

- 66.** Granturi de finanțare pentru procurarea tehnicii agricole în domeniul Agriculturii Conservative și Agriculturii Ecologice. 16 Jan 2019 [cited 12 Apr 2021]. Available: <https://agrobiznes.md/granturi-de-finantare-pentru-procurarea-tehnicii-agricole-in-domeniul-agriculturii-conservative-si-agriculturii-ecologice.html>
- 67.** Litvin A, Petrașcu S. The role and impact of International fund for agricultural development (Ifad) on the rural areas development of the Republic of Moldova. *Sci Pap Univ Kansas Nat Hist Mus.* 2017;17: 221–226. Available: <http://dspace.uasm.md/handle/123456789/4736>

# ANNEX-4: OTHER SOURCES INFORMING THE EVIDENCE REVIEW

Andriucă, V., Cojocar, O., Bacean, I., Cazmaî, N., Mocanu, E., Melnic, R., Macrii, L., & Popa, O. (2017). Agrophysics quality assessment and soil moisture by application conservative system of soil tillage no-till from various agrocoenoses in the Republic of Moldova. *AgroLife Scientific Journal*, 6(1), 14–18. <http://dSPACE.uasm.md/handle/123456789/2511>

Bachman, T. (2003). «Improved Cereal Production Technology» FAO Project on Conservation Agriculture in Mongolia. In L. García-Torres, J. Benites, A. Martínez-Vilela, & A. Holgado-Cabrera (Eds.), *Conservation Agriculture: Environment, Farmers Experiences, Innovations, Socio-economy, Policy* (pp. 235–242). Springer Netherlands. [https://doi.org/10.1007/978-94-017-1143-2\\_28](https://doi.org/10.1007/978-94-017-1143-2_28)

Bär, R., Rouholahnejad, E., Rahman, K., Abbaspour, K. C., & Lehmann, A. (2015). Climate change and agricultural water resources: A vulnerability assessment of the Black Sea catchment. *Environmental Science & Policy*, 46, 57–69. <https://doi.org/10.1016/j.envsci.2014.04.008>

Boincean, B. (2019). Conservation agriculture for winter cereal crops. <https://repo.mel.cgiar.org/handle/20.500.11766/10480>

Boincean, B., & Dent, D. (2019b). Tillage and Conservation Agriculture. In B. Boincean & D. Dent (Eds.), *Farming the Black Earth: Sustainable and Climate-Smart Management of Chernozem Soils* (pp. 125–149). Springer International Publishing. [https://doi.org/10.1007/978-3-030-22533-9\\_6](https://doi.org/10.1007/978-3-030-22533-9_6)

Boincean, B., & Dent, D. (2019c). *Farming the Black Earth: Sustainable and Climate-Smart Management of Chernozem Soils*. Springer Nature. <https://play.google.com/store/books/details?id=FWsDwAAQBAJ>

Boincean, B., & Lal, R. (2014a). 9 Conservation Agriculture. Soil Management of Smallholder Agriculture. [https://books.google.nl/books?hl=en&lr=&id=7SjcBQAAQBAJ&oi=fnd&pg=PA203&dq=conservation+agriculture+moldova&ots=l6YVc56gc7&sig=2bgTty1YoJfjhZUpDQtx\\_TPj4-k](https://books.google.nl/books?hl=en&lr=&id=7SjcBQAAQBAJ&oi=fnd&pg=PA203&dq=conservation+agriculture+moldova&ots=l6YVc56gc7&sig=2bgTty1YoJfjhZUpDQtx_TPj4-k)



Boincean, B., & Lal, R. (2014). Conservation Agriculture on Chernozems in the Republic of Moldova. *Soil Management of Smallholder Agriculture*, 203–221. [https://books.google.nl/books?hl=en&lr=&id=iWhYBQAAQ-BAJ&oi=fnd&pg=PA203&dq=conservation+agriculture+moldova&ots=RY-QXLLx5Ax&sig=A6Z7bnlpjUBjZOdEfV1p3s\\_BrYI](https://books.google.nl/books?hl=en&lr=&id=iWhYBQAAQ-BAJ&oi=fnd&pg=PA203&dq=conservation+agriculture+moldova&ots=RY-QXLLx5Ax&sig=A6Z7bnlpjUBjZOdEfV1p3s_BrYI)

Boincean, B., Rurac, M., Ignat, A., & Grama, M. (2018). Promovarea sistemului conservativ de agricultură în Republica Moldova. *dspace.uasm.md*. <http://dspace.uasm.md/handle/123456789/2367>

Cerbari, V., & Cojocaru, O. (2019). EVALUATION OF QUALITY AMENDMENTS IN ORDINARY CHERNOZEM AFTER INCORPORATION IN THE SOIL A HARVEST OF INTERMEDIATE CULTURE THE VETCH AS A GREEN MASS. *Scientific Papers-Series A-Agronomy*, 62(1), 13–18. [https://apps.webofknowledge.com//full\\_record.do?product=WOS&search\\_mode=GeneralSearch&qid=3&SID=F2ZC1BKZ8Z-PQr5MTWco&page=1&doc=2](https://apps.webofknowledge.com//full_record.do?product=WOS&search_mode=GeneralSearch&qid=3&SID=F2ZC1BKZ8Z-PQr5MTWco&page=1&doc=2)

Cerbari, V., Scorpan, V., Taranu, M., & Bacean, I. (2013). Phyto-technology for Remediation of Chernozem in the South of Moldova. *Soil as World Heritage*, 381–389. [https://books.google.com/books?hl=en&lr=&id=b-BHHBAAAQBAJ&oi=fnd&pg=PA381&dq=Phyto-technology+for+Remediation+of+Chernozem+in+the+South+of+Moldova+\(2014\\_Book\\_SoilAsWorldHeritage+P+376+12\)&ots=oo9btH0\\_6K&sig=jsrVkd91y-ISJ0dX5ah4kPi9FHbo](https://books.google.com/books?hl=en&lr=&id=b-BHHBAAAQBAJ&oi=fnd&pg=PA381&dq=Phyto-technology+for+Remediation+of+Chernozem+in+the+South+of+Moldova+(2014_Book_SoilAsWorldHeritage+P+376+12)&ots=oo9btH0_6K&sig=jsrVkd91y-ISJ0dX5ah4kPi9FHbo)

Certan, S., & Certan, I. (2014). Agriculture and rural development in association agreement between the European Union and the Republic of Moldova. *Scientific Papers*, 14(2), 55–62. <http://89.32.237.114/handle/123456789/4379>

Choudhary, M., Ghasal, P. C., Kumar, S., Yadav, R. P., Singh, S., Meena, V. S., & Bisht, J. K. (2016). Conservation Agriculture and Climate Change: An Overview. In J. K. Bisht, V. S. Meena, P. K. Mishra, & A. Pattanayak (Eds.), *Conservation Agriculture: An Approach to Combat Climate Change in Indian Himalaya* (pp. 1–37). Springer Singapore. [https://doi.org/10.1007/978-981-10-2558-7\\_1](https://doi.org/10.1007/978-981-10-2558-7_1)

Ciocîrlan, N. (2018). Ex-situ conservation of oilseed plant resources in the botanical garden (Institute), Republic of Moldova. *International Congress on Oil and Protein Crops*. [https://ibn.idsi.md/vizualizare\\_articol/83282](https://ibn.idsi.md/vizualizare_articol/83282)

Cojocar, O., & Cerbari, V. (2019). Ecological efficiency of the implementation technology of the Mini-Till and No-Till soil tillage in the Republic of Moldova. <http://dspace.uasm.md/handle/123456789/4833>

Concurs UCIP IFAD: Evaluarea activității a 10 școli de câmp în agricultura conservativă și ecologică. (2020, December 23). <https://agrobiznes.md/concurs-ucip-ifad-evaluarea-activitatii-a-10-scoli-de-camp-in-agricultura-conservativa-si-ecologica.html>

Duca, G. (2014). Allocation of the Academician GHEORGHE DUCA President of the Academy of Sciences of Moldova at the International Scientific Symposium "Conservation of Plant Diversity" 22-24.05. 2014, Chișinău Honourable audience! Revista , 8(1), 5–7. [https://ibn.idsi.md/sites/default/files/imag\\_file/Allocation%20of%20the%20Academician%20Gheorghe%20Duca.pdf](https://ibn.idsi.md/sites/default/files/imag_file/Allocation%20of%20the%20Academician%20Gheorghe%20Duca.pdf)

Ecovisio, AED, & LED. (n.d.). Protecția legumelor în teren protejat. Ecovisio; AED; LED.

Ecovisio, AED, & LED. (2020c). Ce reprezintă asolamentul? Ecovisio, AED, LED.

Ecovisio, AED, & LED. (2020e). Lucrarea solului în agricultura ecologică la culturile cerealiere. Ecovisio; AED; LED.

FIBL. (2019). Agricultura ecologică Principii de bază și bune practici (No. 3001). FIBL, AED, LED.

Ganea, A. (2015). Inventorying of cornelian cherry and hazelnut populations in forest ecosystems of Moldova in the context of the in Situ conservation of crop wild relatives. Buletinul Academiei de Științe a Moldovei. Științele. [https://ibn.idsi.md/vizualizare\\_articol/37604](https://ibn.idsi.md/vizualizare_articol/37604)

Ganea, A. (2017). Development and prospects of introduction of the national program on conservation and sustainable use of plant genetic resources for food and agriculture in the Republic of Moldova. Genetica, Fiziologia și Ameliorarea Plantelor. [https://ibn.idsi.md/vizualizare\\_articol/90400](https://ibn.idsi.md/vizualizare_articol/90400)

Giller, K. E., Andersson, J. A., Corbeels, M., Kirkegaard, J., Mortensen, D., Erenstein, O., & Vanlauwe, B. (2015). Beyond conservation agriculture. *Frontiers in Plant Science*, 6(OCTOBER). <https://doi.org/10.3389/fpls.2015.00870>

Gumovschi, A. (2020). Determinarea carenței de nutrienți la plante. AED, AGROBIZNEZ, LED.

Hill, R. L., Holderbaum, J. F., Boinchan, B., & Morris Decker, A. (1997). Moldova: Moving towards sustainable agriculture. *Journal of Soil and Water Conservation*, 52(4), 215–219. <https://www.jswconline.org/content/52/4/215.short>

IFAD selectează beneficiarul pentru crearea unei școli de câmp în domeniul agriculturii conservative. (2018, January 24). <https://agrobiznes.md/ifad-selecteaza-beneficiarul-pentru-crearea-unei-scoli-de-camp-in-domeniul-agriculturii-conservative.html>

Ignat, A., & Moroz, V. (2014). Conservative cultivation technologies—a new challenge for the agriculture of the Republic of Moldova. *Applied Engineering in Agriculture*. [http://managementjournal.usamv.ro/pdf/vol4\\_2/art26.pdf](http://managementjournal.usamv.ro/pdf/vol4_2/art26.pdf)

Jat, R. A., Sahrawat, K. L., & Kassam, A. H. (2014). Conservation agriculture for sustainable and resilient agriculture: Global status, prospects, and challenges. *Conservation*. <https://books.google.nl/books?hl=en&lr=&id=bRb4AgAAQBAJ&oi=fnd&pg=PA1&dq=conservation+agriculture+moldova&ots=auVIAI9wuj&sig=etztyVyzmMlOjDLzuPQGch28Ris>

Jigau, G. (2015). THE BIOPHYSICAL INSURANCE OF A REGIONAL MODEL OF CONSERVATION AGRICULTURE. *Scientific Papers-Series A, Agronomy*. <http://agronomyjournal.usamv.ro/pdf/2015/vol.LVIII/art9.pdf>

Jigau, G., Motelica, M., Lesanu, M., Chircu, I., Tofan, E., Georgescu, L., & Iticescu, C. (2014). Structural Indices of Typical Chernozem Under Various Methods of Tillage. In D. Dent (Ed.), *Soil as World Heritage* (pp. 395–403). Springer Netherlands. [https://doi.org/10.1007/978-94-007-6187-2\\_39](https://doi.org/10.1007/978-94-007-6187-2_39)

Kassam, A., Derpsch, R., & Friedrich, T. (2014). Global achievements in soil and water conservation: The case of Conservation Agriculture. *International Soil and Water Conservation Research*, 2(1), 5–13. [https://doi.org/10.1016/S2095-6339\(15\)30009-5](https://doi.org/10.1016/S2095-6339(15)30009-5)

Khan, Z., Midega, C., Pittchar, J., Pickett, J., & Bruce, T. (2011). Push-pull technology: a conservation agriculture approach for integrated management of insect pests, weeds and soil health in Africa: UK government's Foresight Food and Farming Futures project. *International Journal of Agricultural Sustainability*, 9(1), 162–170. <https://www.tandfonline.com/doi/abs/10.3763/ijas.2010.0558>

Kuharuk, E., & Crivova, O. (2014). The state of soil erosion in the Republic of Moldova and the need for monitoring. *Soil as World Heritage*. [https://link-springer-com.ezproxy.library.wur.nl/chapter/10.1007/978-94-007-6187-2\\_3](https://link-springer-com.ezproxy.library.wur.nl/chapter/10.1007/978-94-007-6187-2_3)

Leah, T. (2015). Prospects of using the local organic waste in the agriculture of the Republic of Moldova. *Management, Economic Engineering in Agriculture* .... <http://search.ebscohost.com.ezproxy.library.wur.nl/login.aspx?direct=true&profile=ehost&scope=site&authtype=crawler&jrnl=22847995&AN=116325909&h=Wa4qNksQdm0BCpaS9kcuUQZ-RoEE5e6LXN%2Fo%2FZSk8fvX8rnyvLFgYJL0C01jf5aCUrdv3InorrAG-f56qgxRAigQ%3D%3D&crl=c>

Leah, T. (2016b). Abandoned land: A barrier for sustainable development of agriculture of the Republic of Moldova. *Agrarian Economy and Rural Development-Realities and Perspectives for Romania*. 7th Edition of the International Symposium, November 2016, Bucharest, 85–90. <https://www.econstor.eu/handle/10419/163357>

Leah, T. (2015a). *AGRICULTURE AND SOILS OF MOLDOVA: ASSESSMENT, FINDINGS, SOLUTIONS*. The Research Institute for Agriculture Economy and Rural Development. International Symposium. *Agrarian Economy and Rural Development: Realities and Perspectives for Romania*. Proceedings, 330. [https://www.econstor.eu/bitstream/10419/163270/1/ICEADR-2015\\_full-volume.pdf#page=341](https://www.econstor.eu/bitstream/10419/163270/1/ICEADR-2015_full-volume.pdf#page=341)

Lederman, D., Menendez, A. M., Perry, G., & Stiglitz, J. (n.d.). *Moldova-Renewable Energy from Agricultural Waste Biomass Project*. [Agris.fao.org](https://agris.fao.org). <https://agris.fao.org/agris-search/search.do?recordID=US2012407596>

Liogchii, N., Begu, A., Brega, V., & Donica, A. (2011). Conservation of valuable landscape from the basin of the Prut River (the Republic of Moldova). *Oltenia-Studii Si Comunicari*. [https://ibn.idsi.md/vizualizare\\_articol/113987](https://ibn.idsi.md/vizualizare_articol/113987)

Liogchii, N., Begu, A., Donica, A., & Brega, V. (2011). Conservation aspects of biological diversity in forest ecosystems in the Prut River Basin (Republic of Moldova). *Journal of Agricultural* .... <https://www-cabdirect-org.ezproxy.library.wur.nl/cabdirect/abstract/20123098381>

Margineanu, E. (2020a). LEGAL PROTECTION OF FOREST ELEMENTS IN NATURAL ECOSYSTEM: CLASSIFICATION FROM THE REPUBLIC OF MOLDOVA. In Scientific works of National Aviation University. Series: Law Journal "Air and Space Law" (Vol. 4, Issue 57). <https://doi.org/10.18372/2307-9061.57.15037>

Margineanu, E. (2020b). Oscillating policy focus between agriculture and protected areas within environmental law in the Republic of Moldova. <https://dspace.nau.edu.ua/handle/NAU/46862>

Meisner, C. A., Bodruzzaman, M., Amin, M. R., Baksh, E., Hossain, A. B. S., Ahmed, M., & Sadat, A. (2003). Conservation Tillage Options for the Poor, Small Landholders in South Asia. In Conservation Agriculture (pp. 489–494). [https://doi.org/10.1007/978-94-017-1143-2\\_59](https://doi.org/10.1007/978-94-017-1143-2_59)

Musiyiwa, K., Harris, D., Filho, W. L., Gwenzi, W., & Nyamangara, J. (2017). An assessment of smallholder soil and water conservation practices and perceptions in contrasting agro-ecological regions in Zimbabwe. *Water Resources and Rural Development*, 9, 1–11. <https://doi.org/10.1016/j.wrr.2016.09.001>

Nyamangara, J., Mashingaidze, N., Masvaya, E. N., Nyengerai, K., Kunzekweguta, M., Tirivavi, R., & Mazvimavi, K. (2014). Weed growth and labor demand under hand-hoe-based reduced tillage in smallholder farmers' fields in Zimbabwe. *Agriculture, Ecosystems & Environment*, 187, 146–154. <https://doi.org/10.1016/j.agee.2013.10.005>

Pramanik, P., Bhattacharya, P., Chakrabarti, B., & Ghosh, T. (2019). Improved Soil Environment Under Conservation Agriculture. In R. S. Meena, S. Kumar, J. S. Bohra, & M. L. Jat (Eds.), *Sustainable Management of Soil and Environment* (pp. 169–192). Springer Singapore. [https://doi.org/10.1007/978-981-13-8832-3\\_5](https://doi.org/10.1007/978-981-13-8832-3_5)

Senicovscaia, I. (2013). Conservation of invertebrates' biodiversity in soils of the Republic of Moldova. *Agrarian Economy and Rural Development-Realities and Perspectives for Romania*. 4th Edition of the International Symposium, November 2013, Bucharest, 77–84. <https://www.econstor.eu/handle/10419/111566>

Senicovscaia, I. (2012). Sustainable management and conservation of biota in agricultural soils of the Republic of Moldova. The Research Institute for Agriculture Economy and Rural Development. International Symposium. *Agrarian Economy and Rural Development: Realities and Perspectives for Romania*. Proceedings, 286. <https://papers.ssrn.com/sol3/Delivery.cfm?abstractid=2168687#page=298>

- Șerbănescu, A. C. (2020). ASSESSMENT OF THE SOCIAL IMPACT IN THE TRANSITION TO GREEN ECONOMY. *International Multidisciplinary Scientific GeoConference : SGEM*; Sofia, 20, 27–35. <https://doi.org/10.5593/sgem2020/4T/s17.004>
- Smets, S., Broeks, E., Pricop, F., & Capita, I. (2020). *Moldova Policy Notes 2019: Enhancing Water Security and Service Delivery*. World Bank. <https://elibrary.worldbank.org/doi/abs/10.1596/34066>
- Smets, S., Midgley, A., Mao, Z., & Vladicescu, V. (2020). *Moldova*. <https://openknowledge.worldbank.org/handle/10986/34809>
- Story Map Series Ministerul Agriculturii si Industriei Alimentare Moldova Ministry of Agriculture. (n.d.). Retrieved April 12, 2021, from <https://www.arcgis.com/apps/MapSeries/index.html?appid=87c14bb-5c945473a831ab7de6fb54f60>
- Stratan, A., Moroz, V., & Lucașenco, E. (2013). Modernization of the agricultural sector in the context of sustainable development in the Republic of Moldova. *Scientific Papers*, 13(2), 405–410. <http://dspace.ince.md/jspui/handle/123456789/272>
- Tamara, L. (n.d.). IMPROVING CONSERVATION PRACTICES TO PROTECT SOIL AND WATER QUALITY IN AGRICULTURE OF MOLDOVA. *Managementjournal.usamv.ro*. [http://managementjournal.usamv.ro/pdf/vol.16\\_1/Art39.pdf](http://managementjournal.usamv.ro/pdf/vol.16_1/Art39.pdf)
- Tamara, L. (2013). Soil Degradation and Conservative Technologies: Two Incompatible Realities for the Republic of Moldova. *ProEnvironment Promediu*, 6(14). <https://core.ac.uk/download/pdf/267073939.pdf>
- Tamara, L. (2014). Agrochemical service of agriculture in the Republic of Moldova: past and present. *Scientific Papers*. [http://managementjournal.usamv.ro/pdf/vol\\_14/old.Volume\\_14\\_3\\_2014.pdf#page=142](http://managementjournal.usamv.ro/pdf/vol_14/old.Volume_14_3_2014.pdf#page=142)
- Tamara, L. (2015). PROSPECTS OF USING THE LOCAL ORGANIC WASTE IN THE AGRICULTURE OF THE REPUBLIC OF MOLDOVA. *Prospects*. [http://managementjournal.usamv.ro/pdf/vol.XV\\_1/Art37.pdf](http://managementjournal.usamv.ro/pdf/vol.XV_1/Art37.pdf)
- Tentiuc, C., & Mocanu, N. (2017). Sustainable development of the agricultural sector in the Republic of Moldova. *Lucrări științifice*, 60(1), 179–182. <http://dspace.uasm.md/handle/123456789/2394>

Timofti, E., Șargo, A., Coșciug, C., Timofti, G., & Cereteu, R. (2017). Static analysis of the economic efficiency of investments in agriculture in the Republic of Moldova. *Lucrări științifice*, 60(2), 111–116. <http://dspace.uasm.md/handle/123456789/2402>

Țurcan, V. (2016). Present situation and conservation perspectives of herpetofauna in the Republic of Moldova. *Sustainable Use, Protection of Animal World and Forest*. [https://ibn.idsi.md/vizualizare\\_articol/67609](https://ibn.idsi.md/vizualizare_articol/67609)

Umar, B. B., Aune, J. B., Johnsen, F. H., & Lungu, O. I. (2011). Options for improving smallholder conservation agriculture in Zambia. *Journal of Agricultural Science*, 3(3), 50. [https://www.academia.edu/download/33144699/Umar\\_et\\_al\\_2011\\_options\\_for\\_improving\\_Ca\\_in\\_Zambia.pdf](https://www.academia.edu/download/33144699/Umar_et_al_2011_options_for_improving_Ca_in_Zambia.pdf)

Voß, H. U., Musteață, S., & Popa, A. (2013). Forward-Looking for Conservation. Case Study: Landscape Archaeology in the Cubolta River Valley, Republic of Moldova—the Project “Cultural Relations of .... Current Trends in Archaeological. [https://www.academia.edu/download/52204110/MNG\\_BAR\\_male.pdf#page=21](https://www.academia.edu/download/52204110/MNG_BAR_male.pdf#page=21)

Webinar: Rezultatele Școlilor de Câmp în agricultura conservativă. (2021a, March 23). <https://agrobiznes.md/webinar-rezultatele-scolilor-de-camp-in-agricultura-conservativa.html>

Webinar: Rezultatele Școlilor de Câmp în agricultura conservativă. (2021b, March 23). <https://agrobiznes.md/webinar-rezultatele-scolilor-de-camp-in-agricultura-conservativa.html>

Wollni, M., Lee, D. R., & Thies, J. E. (2010). Conservation agriculture, organic marketing, and collective action in the Honduran hillsides. *Agricultural Economics*, 41(3-4), 373–384. <https://doi.org/10.1111/j.1574-0862.2010.00445.x>

# ANNEX-5: ADDITIONAL WEB RESOURCES INFORMING THE ASSESSMENT

IFAD and other Support for Conservation Agriculture System in Moldova: <https://agrobiznes.md/?s=agricultura+conservativa>

<https://finantare.gov.md/?s=agricultura>

Regulations and instruments supporting the Conservation Agriculture System on nature and conservation:

<https://madrn.gov.md/ro/content/fondul-ecologic-na%C8%9Bional>

<http://www.mediu.gov.md/ro>

Statistics on the Conservation Agriculture System

<https://statistica.gov.md/pageview.php?l=ro&idc=601&id=6322>

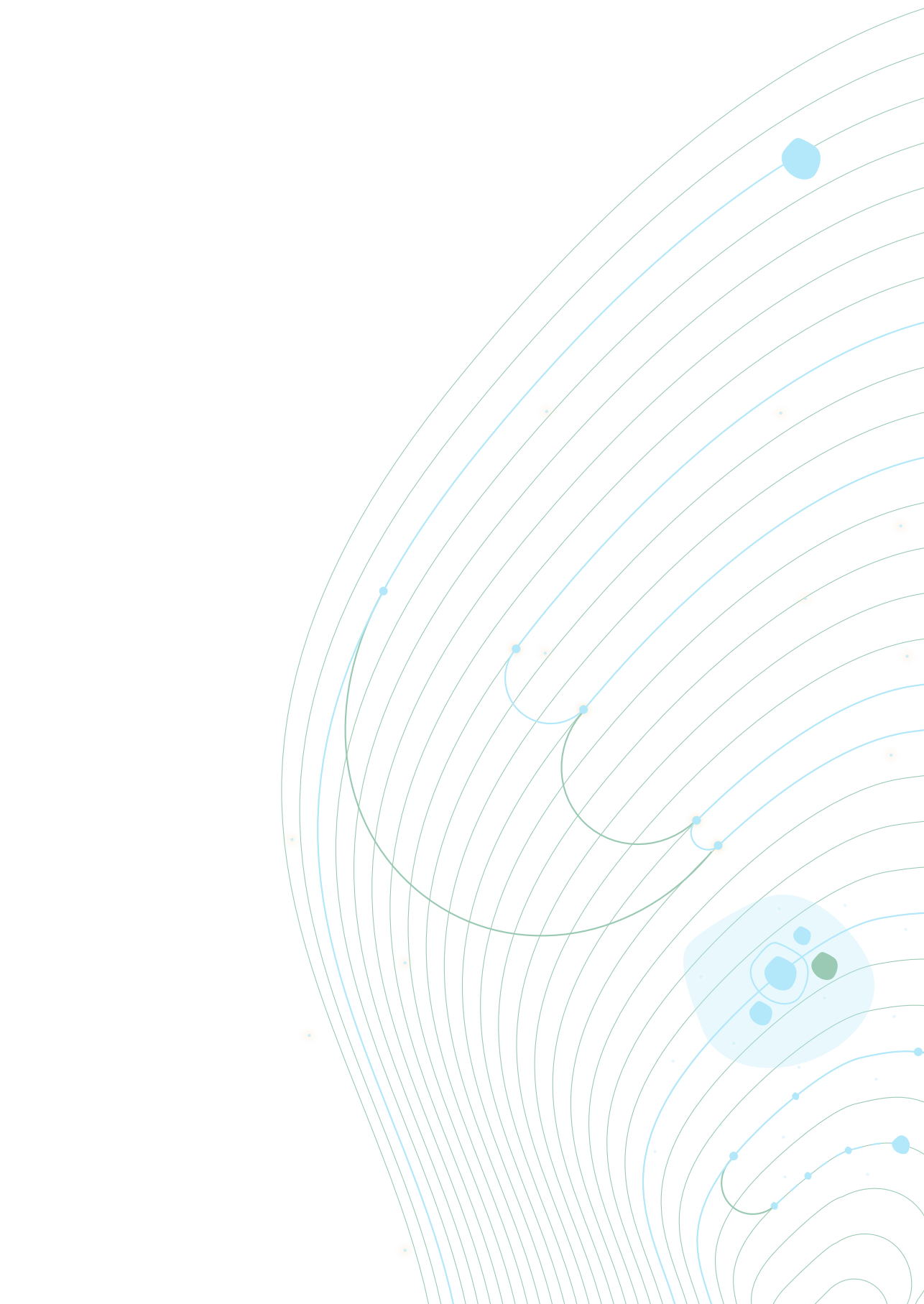
Maps informing the governance and implementation of the Conservation Agriculture Systems:

<https://madrn.gov.md/ro/content/har%C8%9Bi-digitale>

<https://www.arcgis.com/apps/MapSeries/index.html?appid=87c14bb5c945473a831ab7de6fb54f60>

<http://www.ucipifad.md/harta-interactiva/>





# Scaling Readiness of the Conservation Agriculture System in Moldova

