

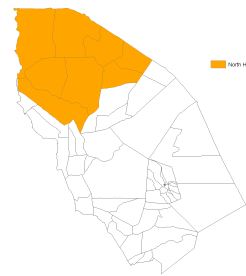
# Index in North Horr

Data up to 22 Mar 2013 - 6 Apr 2013

This page provides the update on the predicted livestock mortality index and the summary of the underlying data in North Horr for March - September 2013 (Long Rain Long Dry, LRLD) insurance coverage period based on the data up to 22 Mar 2013 - 6 Apr 2013. For information on the definition of these variables, see <http://hdl.handle.net/10568/3408>.

Table 1. Summary

Index Area	North Horr
Year	2013
Season	LRLD
Date of the most recent data	22 Mar 2013 - 6 Apr 2013
Predicted Livestock Mortality	0.05
Czndvi_pre	-3.89
Czndvi_pos	-3.31
CNzndvi	1.04
CPzndvi	0.90



North Horr

For the details on index color, click [here](#).

Figure 1. ZNDVI in North Horr from October 2012 to present

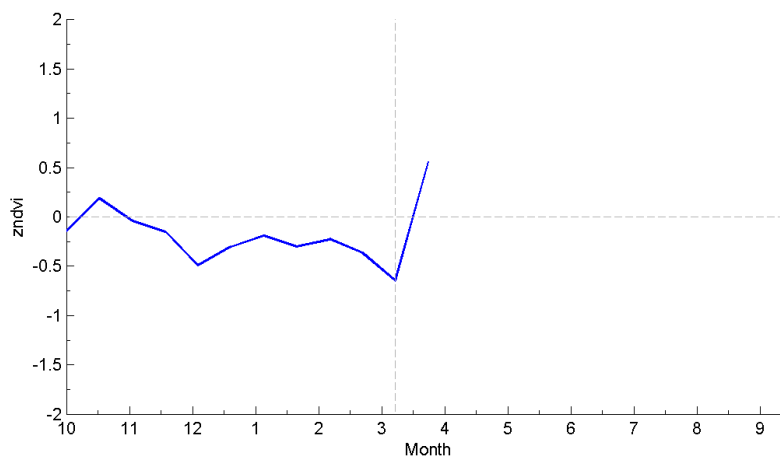
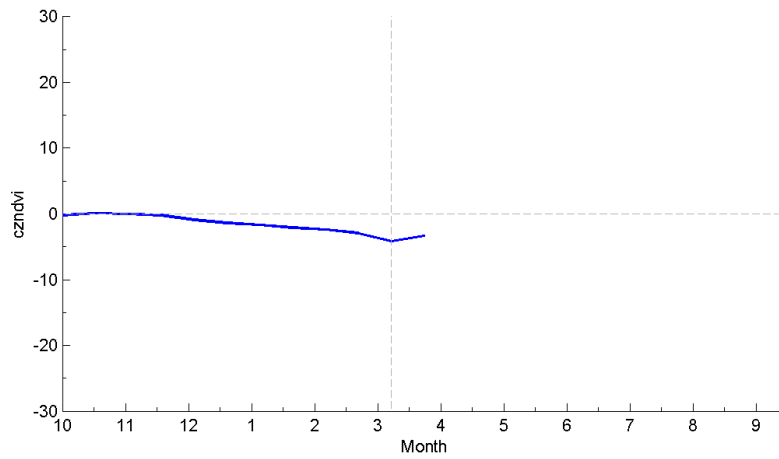


Figure 2. Czndvi in North Horr from October 2012 to present



**Table 2. zndvi**

year	month	16-day	date	zndvi
2012	9	18	29 Sep 2012 - 14 Oct 2012	-0.15
2012	10	19	15-30 Oct 2012	0.19
2012	10	20	31 Oct 2012 - 15 Nov 2012	-0.04
2012	11	21	16 Nov 2012 - 1 Dec 2012	-0.15
2012	12	22	2-17 Dec 2012	-0.49
2012	12	23	18-31 Dec 2012	-0.31
2013	1	1	1-16 Jan 2013	-0.19
2013	1	2	17 Jan 2013 - 1 Feb 2013	-0.30
2013	2	3	2-17 Feb 2013	-0.23
2013	2	4	18 Feb 2013 - 5 Mar 2013	-0.37
2013	3	5	6-21 Mar 2013	-0.65
2013	3	6	22 Mar 2013 - 6 Apr 2013	0.56

For more information on the IBLI project, visit <http://livestockinsurance.wordpress.com>.