

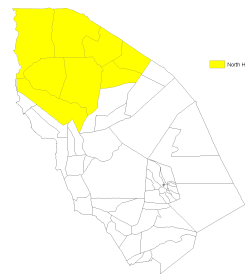
Index in North Horr

This page provides the update on the predicted livestock mortality index and the summary of the underlying data in North Horr for March - September 2012 (Long Rain Long Dry, LRLD) insurance coverage period based on the data up to 13-28 Sep 2012. For information on the definition of these variables, see <http://hdl.handle.net/10568/3408>.

Table 1. Summary

Index Area	North Horr
Year	2012
Season	LRLD
Date of the most recent data	13-28 Sep 2012
Predicted Livestock Mortality	0.04
Czndvi_pre	14.50
Czndvi_pos	14.54
CNzndvi	2.18
CPzndvi	1.60

Data up to 13-28 Sep 2012



North Horr

For the details on index color, click [here](#).

Figure 1. ZNDVI in North Horr from October 2011 to September 2012

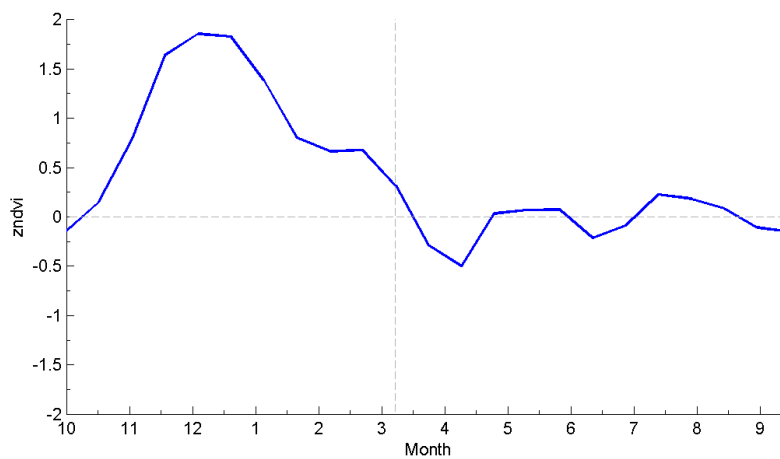


Figure 2. Czndvi in North Horr from October 2011 to September 2012

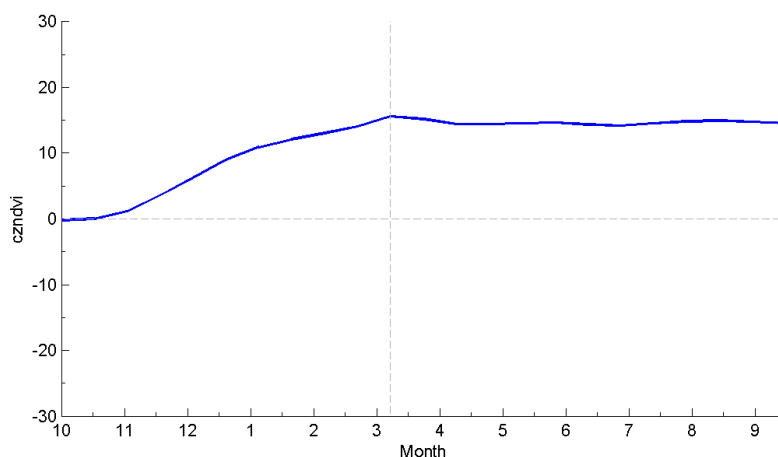


Table 2. zndvi

year	month	16-day	date	zndvi
2011	9	18	30 Sep 2011 - 15 Oct 2011	-0.14
2011	10	19	16-31 Oct 2011	0.15
2011	11	20	1-16 Nov 2011	0.79
2011	11	21	17 Nov 2011 - 2 Dec 2011	1.64
2011	12	22	3-18 Dec 2011	1.86
2011	12	23	19-31 Dec 2011	1.83
2012	1	1	1-16 Jan 2012	1.39
2012	1	2	17 Jan 2012 - 1 Feb 2012	0.80
2012	2	3	2-17 Feb 2012	0.66
2012	2	4	18 Feb 2012 - 4 Mar 2012	0.68
2012	3	5	5-20 Mar 2012	0.32
2012	3	6	21 Mar 2012 - 5 Apr 2012	-0.29
2012	4	7	6-21 Apr 2012	-0.50
2012	4	8	22 Apr 2012 - 7 May 2012	0.03
2012	5	9	8-23 May 2012	0.07
2012	5	10	24 May 2012 - 8 Jun 2012	0.07
2012	6	11	9-24 Jun 2012	-0.21
2012	6	12	25 Jun 2012 - 10 Jul 2012	-0.09
2012	7	13	11-26 Jul 2012	0.23
2012	7	14	27 Jul 2012 - 11 Aug 2012	0.18
2012	8	15	12-27 Aug 2012	0.09
2012	8	16	28 Aug 2012 - 12 Sep 2012	-0.11
2012	9	17	13-28 Sep 2012	-0.15

For more information on the IBLI project, visit <http://livestockinsurance.wordpress.com>.