



INITIATIVE ON
Gender Equality



ICARDA

Strengthening women's resilience and participation in climate governance in the agrifood sector through public policies: A Strategic Review

Canadian Association of Geographers (CAG) 2024: 74th Annual Meeting & Conference

Memorial University of Newfoundland – August 14 to 18, 2024

Kamaldeen Mohammed (Presenter) - Western University, Canada

Dina Najjar - International Centre for Agricultural Research in the Dry Areas (ICARDA), Morocco

Elizabeth Bryan - International Food Policy Research Institute (IFPRI), United States



Western

HER+: Harnessing gender and social equality for resilience in agrifood systems

- HER+ is a CGIAR research initiative working to achieve climate resilience by strengthening gender equality and social inclusion across food systems in the Global South.
- HER+ Initiative tackles four main dimensions of gender inequality in agri-food systems to build climate change resilience through;
 - Enhancing women's agency: Their ability to express and act on goals, make decisions that matter to them, and participate economic activities.
 - Improve women's of access to and control over productive resources
 - Tackle social norms that discriminate based on gender
 - Improve policies and governance to include and benefit women

Background

- Women are both vulnerable to climate change in unique ways and should make important contributions to increase the climate resilience of the agrifood sector.
- It is imperative for governments to design and enact policies to alleviate gendered constraints and build women's resilience capacities in line with the Sustainable Development Goals
- Public policies are crucial for strengthening women's resilience to climate change and promoting their leadership in climate change governance.
- Public policies shape the socio-economic and political environment for the distribution of resource and participation in decision making.
- However, women's participation in climate change and disaster risk governance remain low, especially in the Global South

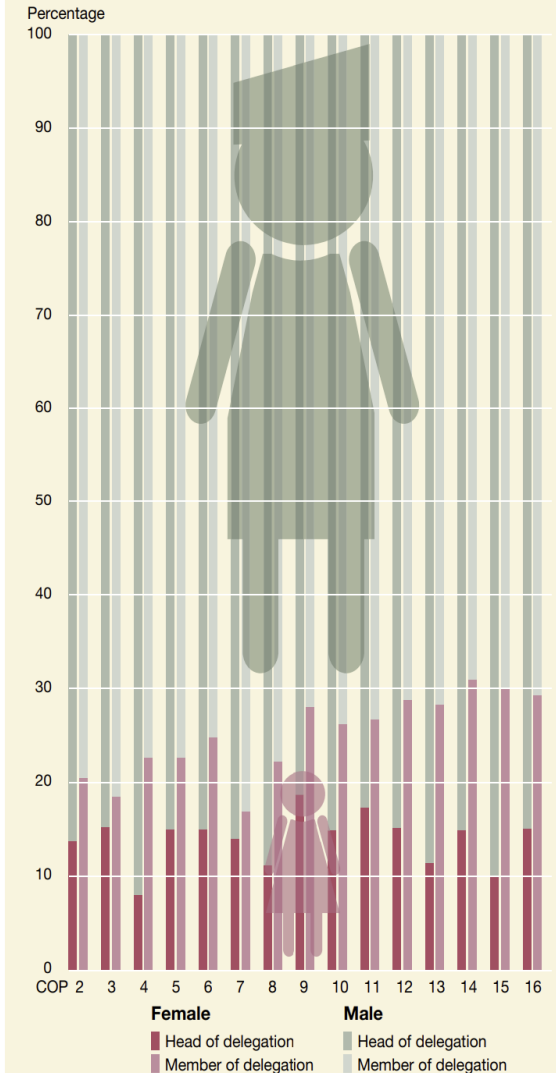
Purpose of review

To identify best practices and map evidence of **public policies** in the Global South that;

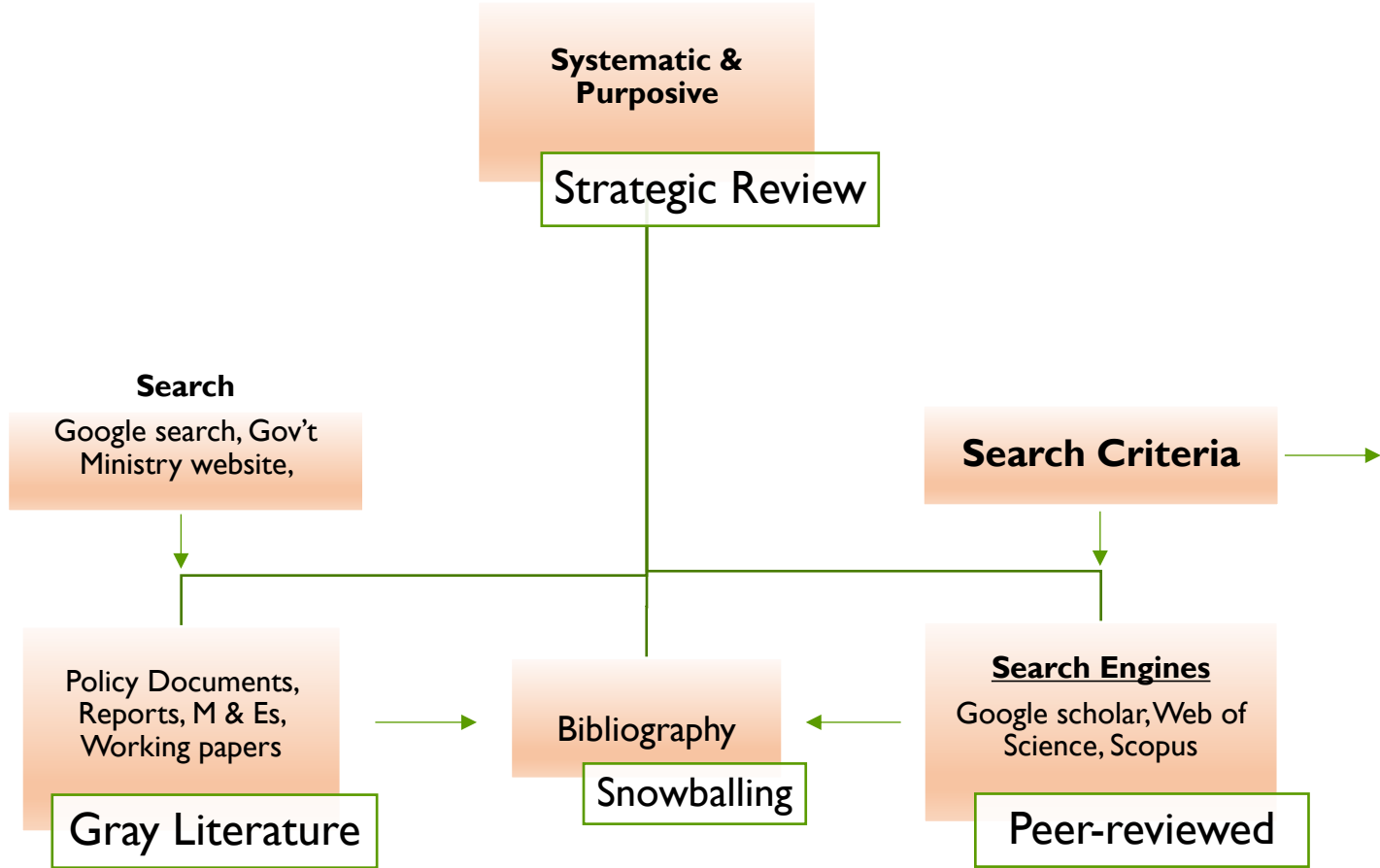
- Enhance women's resilience to climate change and disasters in the AFS.
- Promote women's full and effective participation in climate change and disaster governance.

"Women's full and effective participation is understood as a meaningful involvement and exertion of influence by all relevant diversity of women at all levels of the process of decision-making" (REDD+, 2021).

Gender (im)balance in the delegation of parties (COP) on climate change



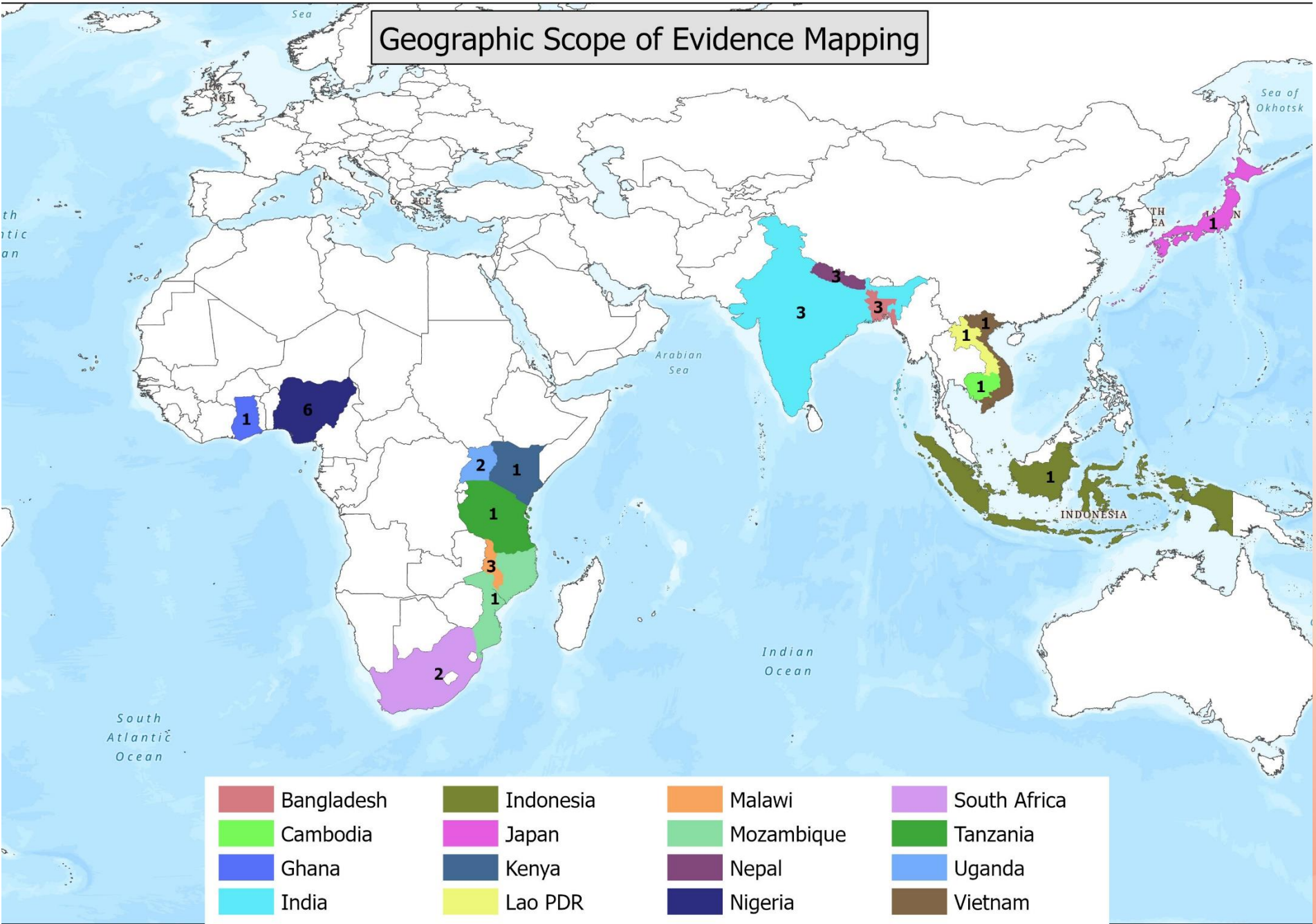
Methods



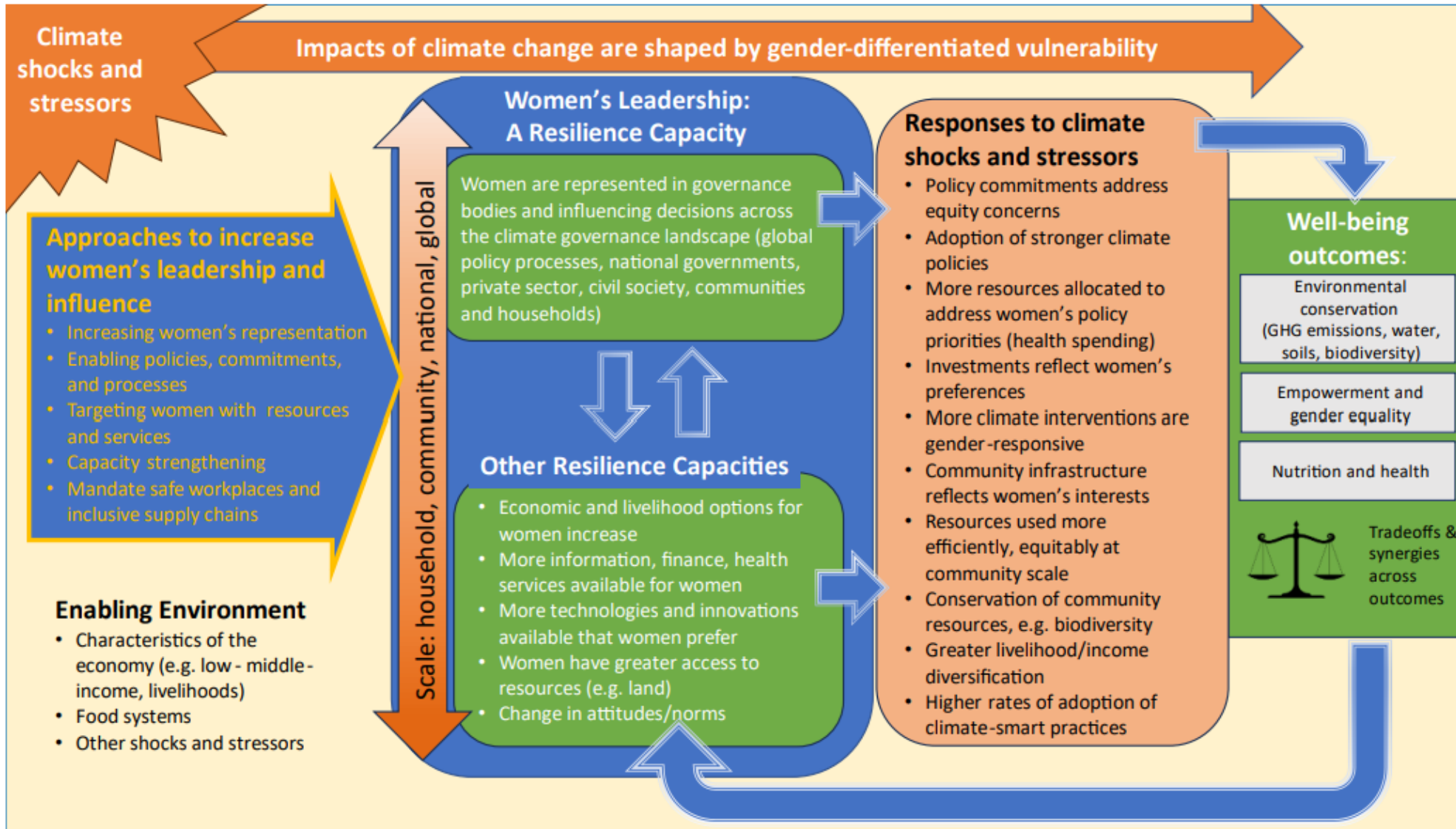
1	“policy” OR “bill” OR “legislation” OR “regulation” OR “national plan” OR “policy-blind”
2	“gender” OR “equality” OR “women” OR “equity” OR “social justice”
3	“climate change” OR “adaptation” OR “climate-resilient” OR “climate mitigation” OR “climate innovation” OR “vulnerability” OR “climate shocks” OR “resilience” OR “participation” OR “leadership”
4	“food” OR “livelihood” OR “poverty” OR “agrifood” OR “water” OR “forest” OR “livestock” OR “irrigation” OR “agriculture”
Search combinations	1 And 2 And 3 And 4 1 And 2 And 3 1 And 2 And 4
Geographic Scope	Rural Global South with interest in Nigeria, India & Malawi
Timeline:	2010 - 2022

Table 1: General Search Criteria

Geographic Scope of Evidence Mapping



Conceptual Framework



Evidence Map and Gaps

Aspired policy outcomes for enhanced resilience ● and participation ●



		Improved gender-sensitivity of climate policies	Increased resilience of agri-food systems	Increased participation of women in disaster governance	Enhanced women empowerment and leadership in climate governance	Gender-responsive climate action	Increased women's access to productive resources	Improved women's adaptation and resilience capacity	Integrated gender actions in agricultural policies
Women's status and role in climate change policymaking at multiple scales	International commitments to gender integration in national climate change policies	●	●	●	●	●			
	Women's decision making and leadership at the local levels: The role of policy	●		●	●		●		
National plans and frameworks for integrating gender	National Adaptation Plans (NAPS)	●				●			
	National Adaptation Programmes of Actions (NAPA)	●							
	Nationally Determined Contributions (NDCs)					●	●	●	
	National Development Plans (NDPs)	●							●
Approaches for increasing women's full and effective participation and leadership	Quotas to increase women's participation in climate change policy and initiatives	●			●	●			●
	Increasing women's capacities to participate in decision making	●	●		●	●			
	Incentives to ensure women's participation in decision making						●		
Policy approaches for increasing women's resilience capacities	Increasing women's access to productive resources and services through policy	●					●		
	The role of policy in promoting women's human capital development and economic empowerment	●						●	
	The extent to which policy approaches consider well-being outcomes					●	●	●	



Key results

Public policies utilize quotas, capacity building, and incentivization to promote women's participation in climate governance.

Public policies prioritized women's access to productive agrifood resources as a crucial means of improving their climate resilience.

Some policy approaches (e.g., Kudumbashree, and the National Action Plan on Gender and Climate Change of Nigeria), seek to eliminate gender stereotypes and sexism that hinder women's adaptive and resilient capacities

There is a lack of implementation and evaluation of public policies to understand their effectiveness in improving women's participation in climate governance or resilience.

Policy Insights

- Policies should strengthen local resource mobilization for more context-specific local implementation spearheaded by both men and women alike. The failure of women's empowerment in climate change policy in the Global South is partly due to overdependence on international funds and aid.
- Coherence in all national, regional, and local policies is needed to improve women's resilience to climate change. For instance, NDCs must be anchored to NDPs, NAPs, NAPAs, and other gender policies. It is also essential to cooperate with other agencies in monitoring frameworks for each ministry and budget planning cycle, and for performance metrics to include policy harmonization and integration.
- Successful and effective gender and climate change policy implementation also requires renewed political and institutional commitments and unified leadership from government. The mandate of agencies responsible for implementing such policies must be made clear with continual support, irrespective of government or institutional leadership changes.
- Most policies and national plans use gender quotas for women's empowerment. Quotas are vital to increasing women's representation in climate change policy and programs. However, these should be used alongside more comprehensive approaches (for example, targeting gender norms and building women's leadership capacity) and not as a panacea for women's empowerment.
- There is a lack of robust monitoring and evaluation of the extent to which implemented policies can improve women's participation in climate governance and enhance their resilience to climate change. Thus, a robust monitoring and evaluation system should be an integral part of policies to measure the intended impacts of policies.



THANK YOU



Additional Resources

Working Paper: [Women's resilience and participation in climate governance in the agri-food sector: A strategic review of public policies](#)

Policy Brief: [Strengthening women's resilience and participation in climate governance in the agri-food sector through public policies](#)



INITIATIVE ON
Gender Equality