

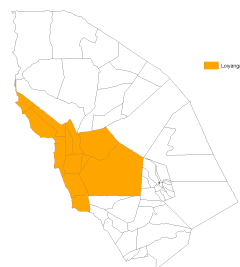
Index in Loiyangalani

Data up to 22 Mar 2013 - 6 Apr 2013

This page provides the update on the predicted livestock mortality index and the summary of the underlying data in Loiyangalani for March - September 2013 (Long Rain Long Dry, LRLD) insurance coverage period based on the data up to 22 Mar 2013 - 6 Apr 2013. For information on the definition of these variables, see <http://hdl.handle.net/10568/3408>.

Table 1. Summary

Index Area	Loiyangalani
Year	2013
Season	LRLD
Date of the most recent data	22 Mar 2013 - 6 Apr 2013
Predicted Livestock Mortality	0.04
Czndvi_pre	-1.83
Czndvi_pos	-1.68
CNzndvi	0.91
CPzndvi	0.30



Loiyangalani

For the details on index color, click [here](#).

Figure 1. ZNDVI in Loiyangalani from October 2012 to present

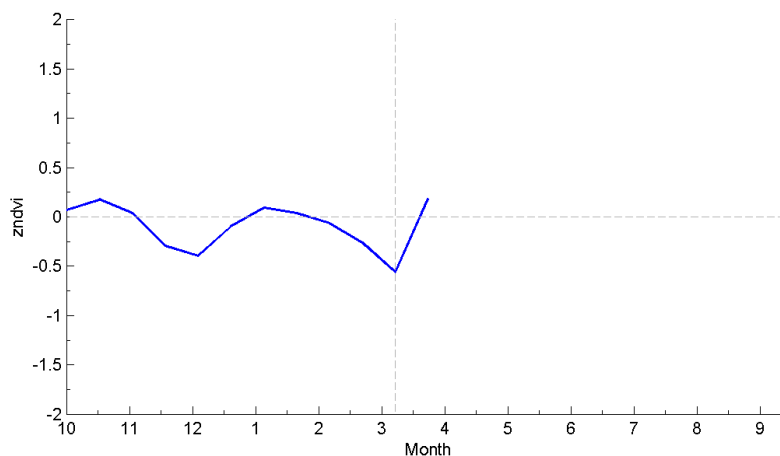


Figure 2. Czndvi in Loiyangalani from October 2012 to present

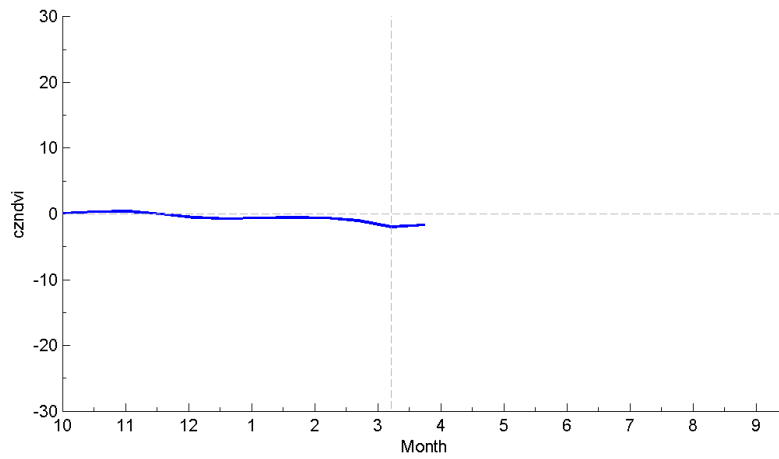


Table 2. zndvi

year	month	16-day	date	zndvi
2012	9	18	29 Sep 2012 - 14 Oct 2012	0.07
2012	10	19	15-30 Oct 2012	0.18
2012	10	20	31 Oct 2012 - 15 Nov 2012	0.04
2012	11	21	16 Nov 2012 - 1 Dec 2012	-0.29
2012	12	22	2-17 Dec 2012	-0.40
2012	12	23	18-31 Dec 2012	-0.10
2013	1	1	1-16 Jan 2013	0.09
2013	1	2	17 Jan 2013 - 1 Feb 2013	0.04
2013	2	3	2-17 Feb 2013	-0.06
2013	2	4	18 Feb 2013 - 5 Mar 2013	-0.26
2013	3	5	6-21 Mar 2013	-0.56
2013	3	6	22 Mar 2013 - 6 Apr 2013	0.19

For more information on the IBLI project, visit <http://livestockinsurance.wordpress.com>.